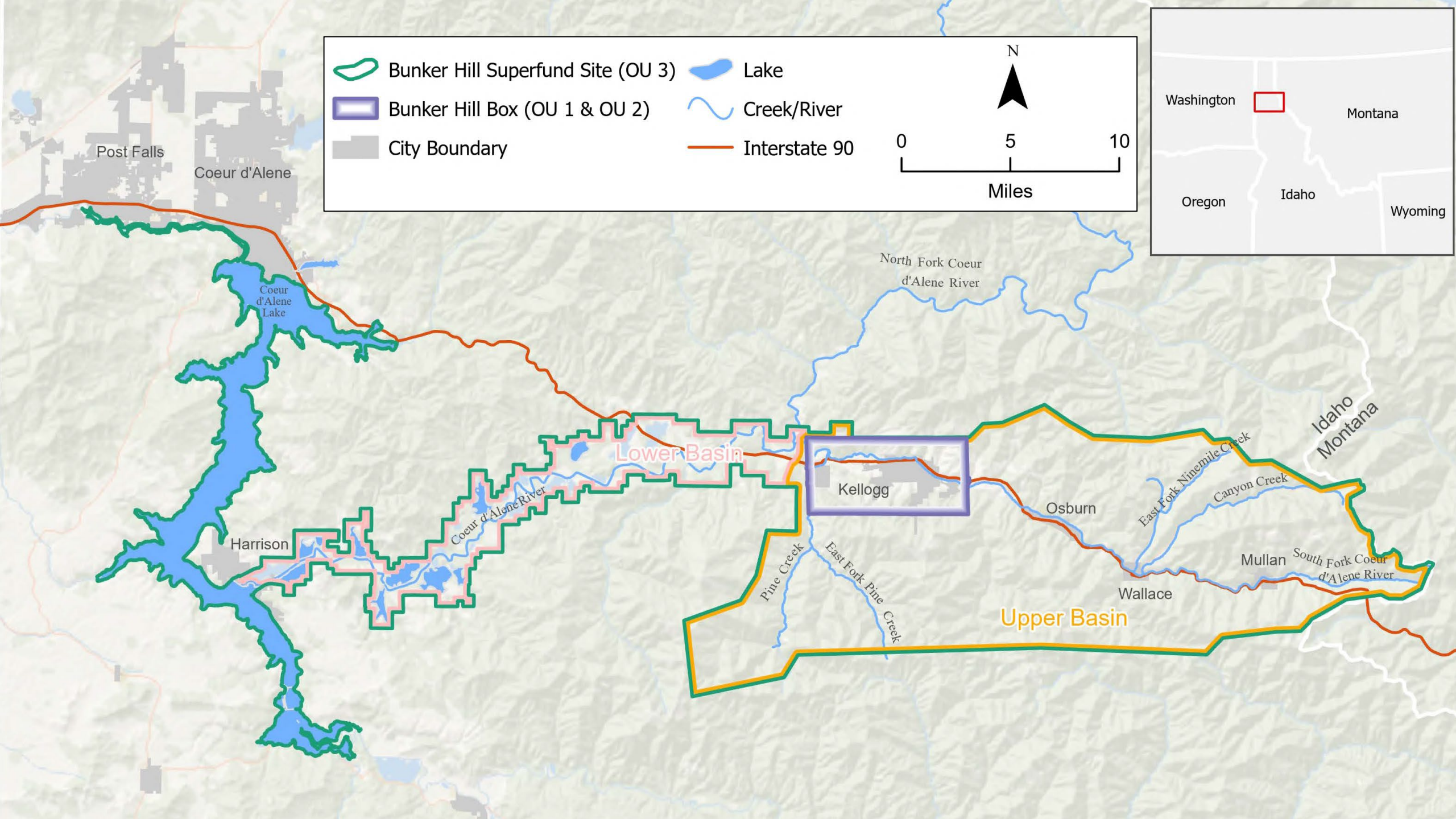




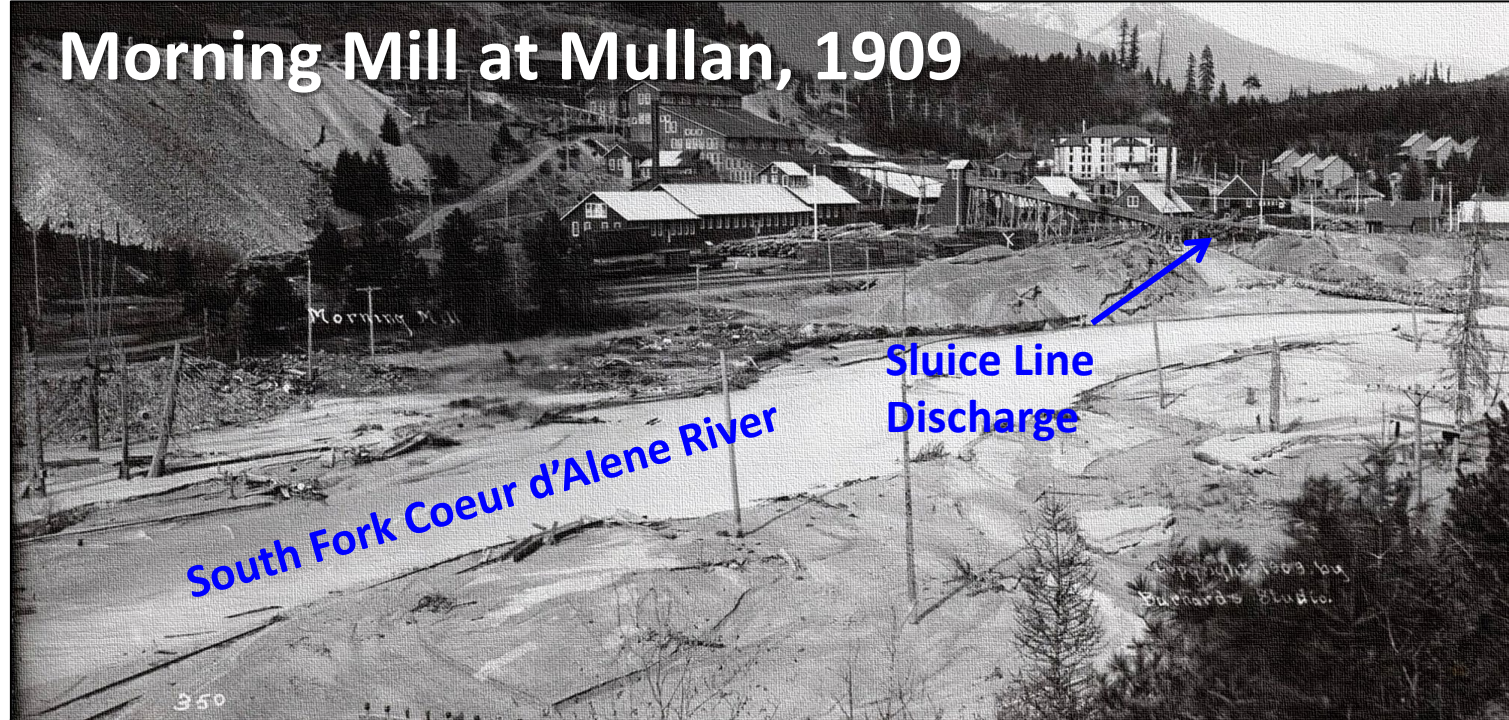
2026 EPA Construction Activities



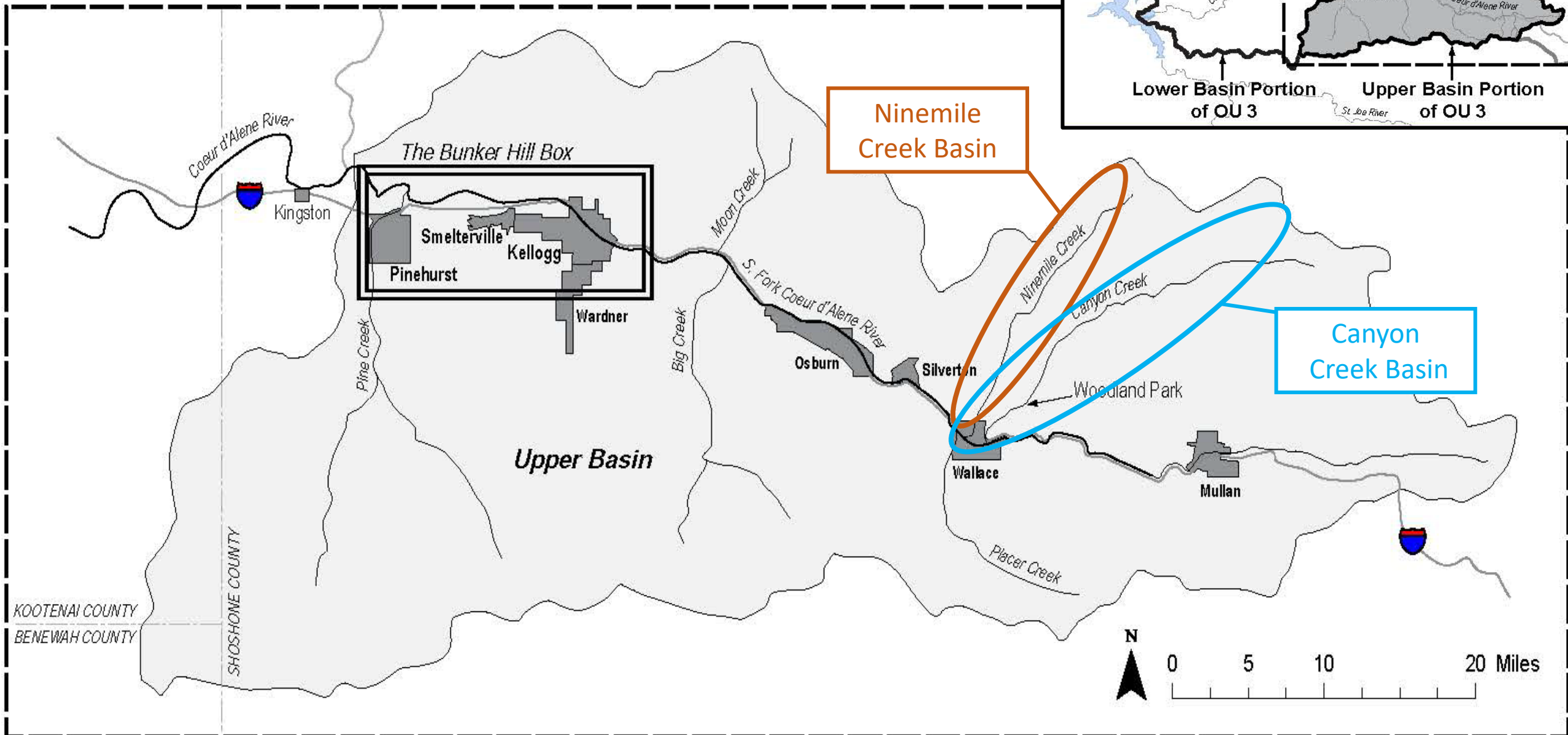
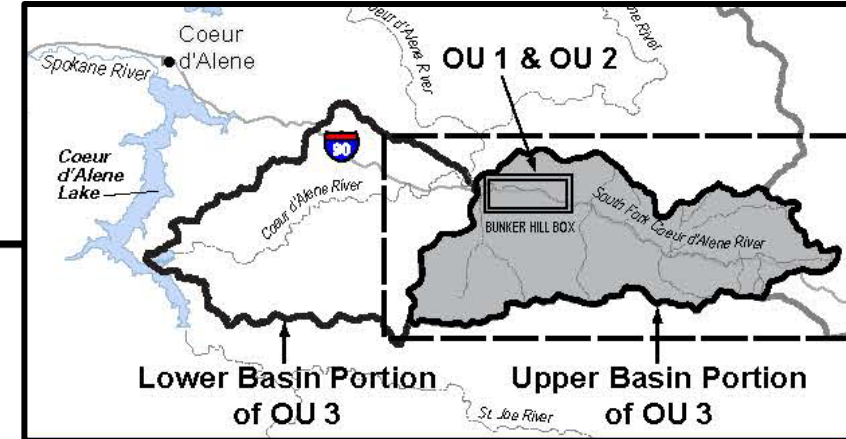


Site History

- Large-scale mining & milling began in the 1880s
 - ✓ Common waste disposal practices
 - ✓ Over 100 million tons of mine waste spread over thousands of acres
- Superfund National Priorities List in 1983
 - ✓ Highest blood lead levels in the country



Upper Basin



East Fork Ninemile Waste Consolidation Area

- Cleanup began in 2013, and all **priority** cleanup actions completed in 2024.
- Final cover will be completed in 2026.
- Groundwater and surface water performance monitoring will continue after closure.

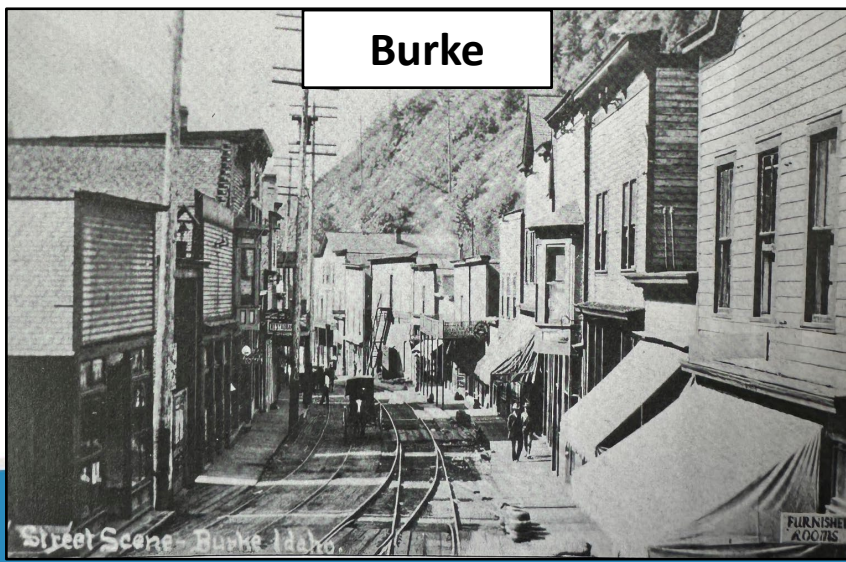
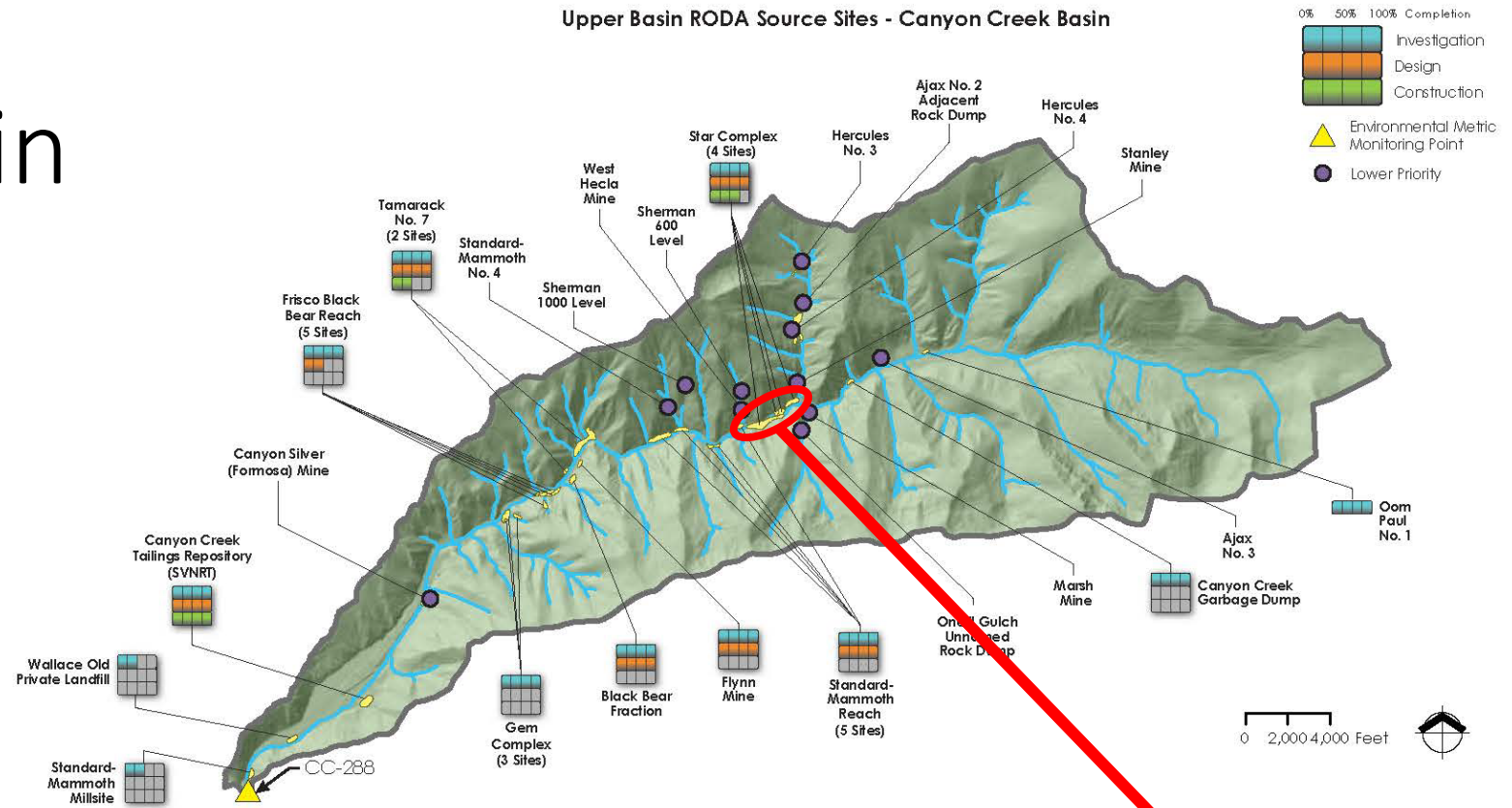


Photos by CDA Work Trust

Canyon Creek Basin

- Cleanup began in 2023
- Investigations began at all sites to assess priorities.
- Waste removed and placed at a nearby repository.
- Groundwater and surface water performance monitoring will continue.

Upper Basin RODA Source Sites - Canyon Creek Basin



Hecla Star Complex

- 4th and final year of construction
- Removal of 65,000 cubic yards of mine waste, backfill with clean rock and gravel from Canyon Creek Quarry
- 600 linear feet of creek reconstruction
- 2,900 linear feet of new asphalt on Burke Road
- Removal of large source of quality downstream and reduce exposure for people and wildlife



Photo by CDA Work Trust

Tamarack No. 7

- 2nd and final year of construction
- 50,000 cubic yards of mine waste removal
- Backfill with clean gravel and rock from CCQ
- 1,100 linear feet of Canyon Creek will be reconstructed



Photos by CDA Work Trust



Flynn Mine and Black Bear Fraction

- Relatively small site but assigned a higher priority because of the potential for residential exposure
- Removal of approximately 9,000 cy of mine waste
- Regrade and cap with clean cover materials from Canyon Creek Quarry



Photo by CDA Work Trust

Canyon Complex Repository Expansion

- Will receive waste from Star Complex, Tamarack No. 7, and Flynn Mine and Black Bear Fraction
- Start of expansion to provide approx. 541,200 BCY of additional capacity to accommodate RA waste through 2029



Photo by CDA Work Trust

Upper Basin Designs

- Canyon Creek Garbage Dump
- Gem Complex
- Frisco Black Bear Reach



Gem Complex (above) and Frisco Black Bear (below)

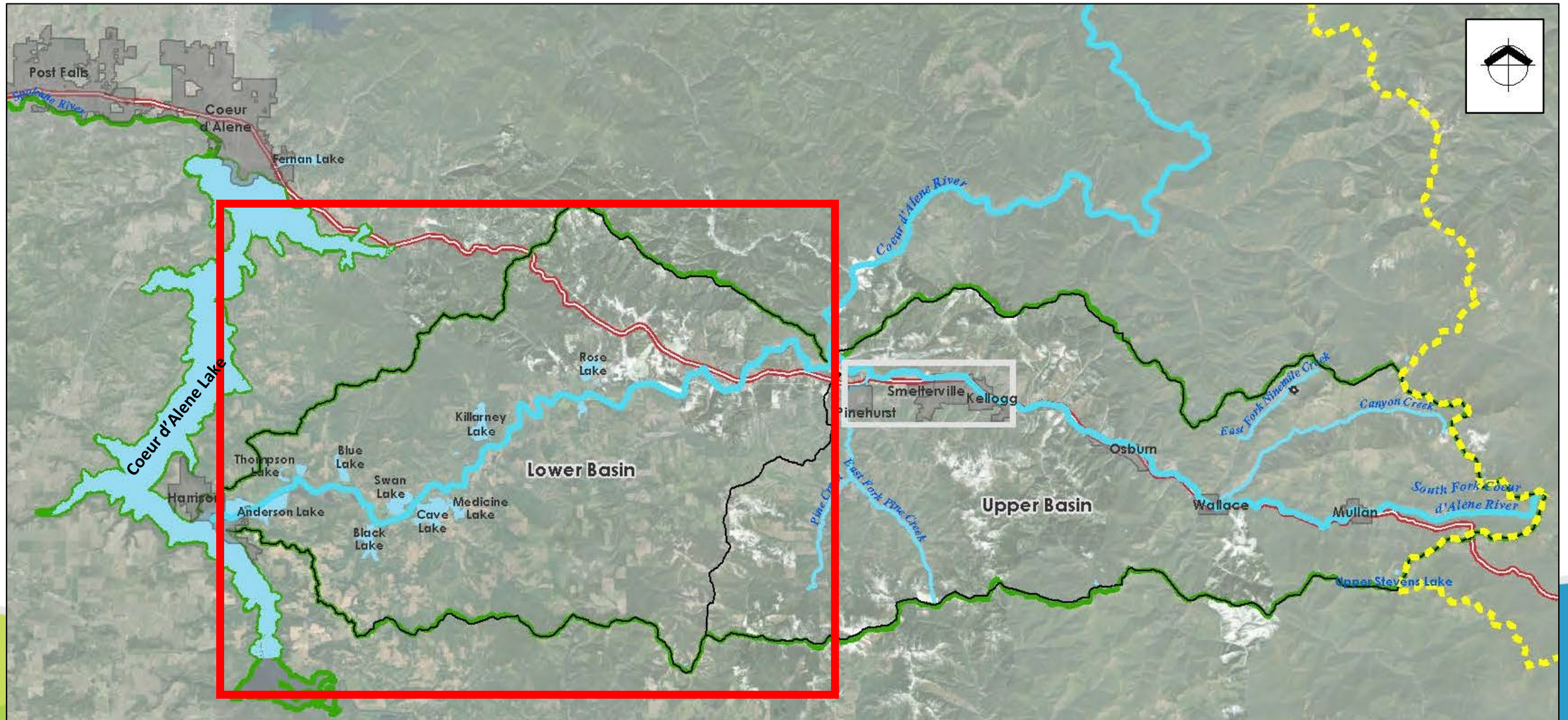


Canyon Creek Garbage Dump



Photos by CDA Work Trust and EPA

Lower Basin





Cataldo Reach Riverbanks Pilot

- **Goals**

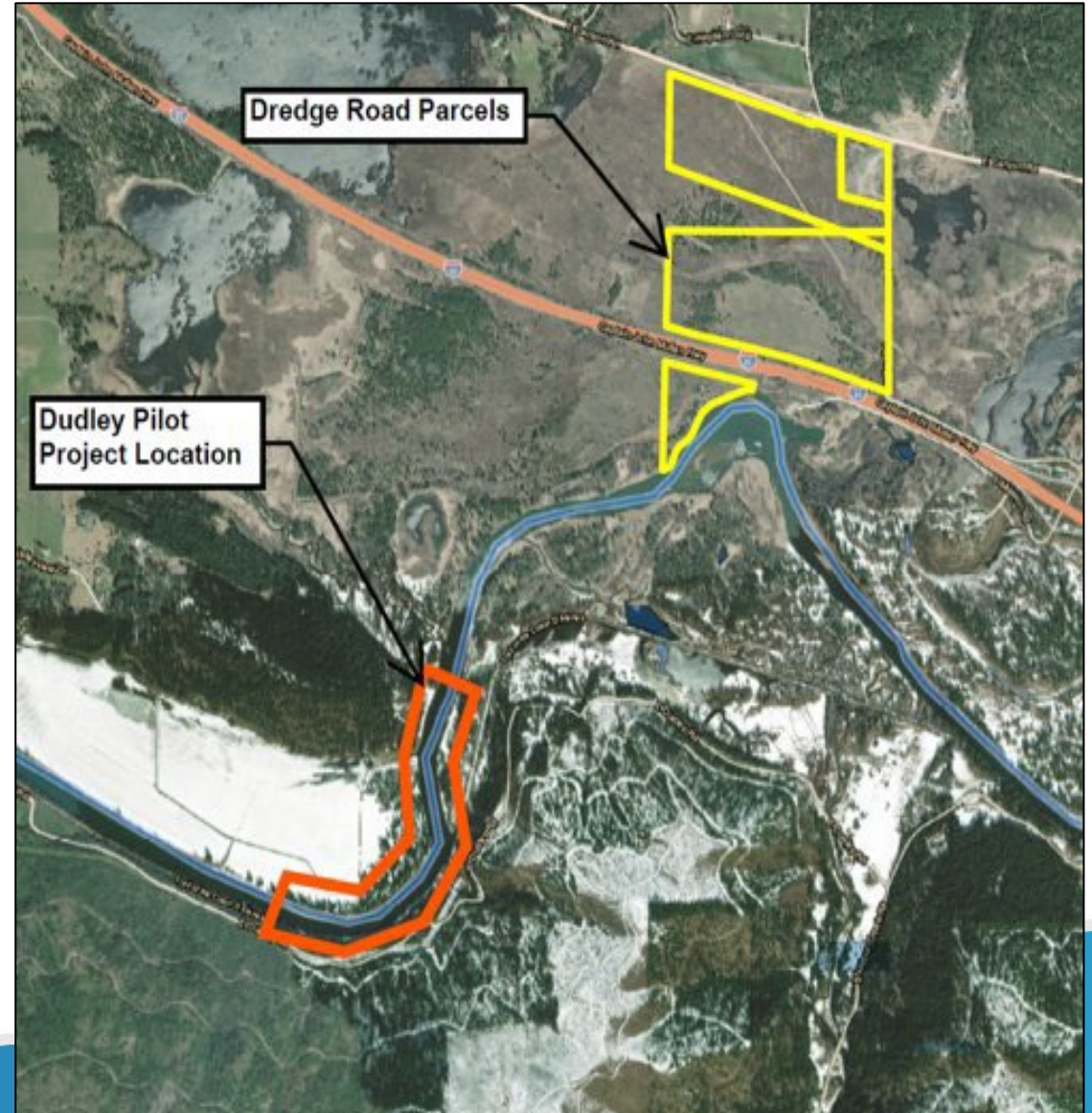
- Evaluate construction means and methods, costs, and performance of technologies
- Minimize changes to river hydraulics
- Stabilize banks and reduce erosion of contaminated riverbank soil and mobilization into water

- **Schedule**

- Design for riverbank stabilization in the Cataldo Reach is ongoing
- Tentative construction in 2027

Dudley Reach Scour Hole Pilot Project and Dredge Road WCA

- Dudley Reach Scour Hole Pilot Project Goals
 - Reduce downstream migration of particulate lead from the riverbed and banks while minimizing adverse system responses
 - Develop means and methods for technology applications to address the rest of the riverbed
 - Establish monitoring methods for assessing remedy performance
- Dudley Reach Pilot Schedule
 - 2026: Investigations of upland transfer facility
 - 2027 – 2028: 60% - 100% Design
 - 2029 – 2030: Construction
- Dredge Road WCA
 - Design ongoing through 2027
 - Construction: 2028
 - Ready to accept waste: 2029



Gleasons Wetland

- 250 acres of ag-to-wetland
- Ongoing water elevation monitoring
- Design ongoing, through 2027
 - Incorporate remediation and restoration activities
- Remedial action 2028 – 2029



Photo by CDA Work Trust

Killarney Peninsula Rec Site

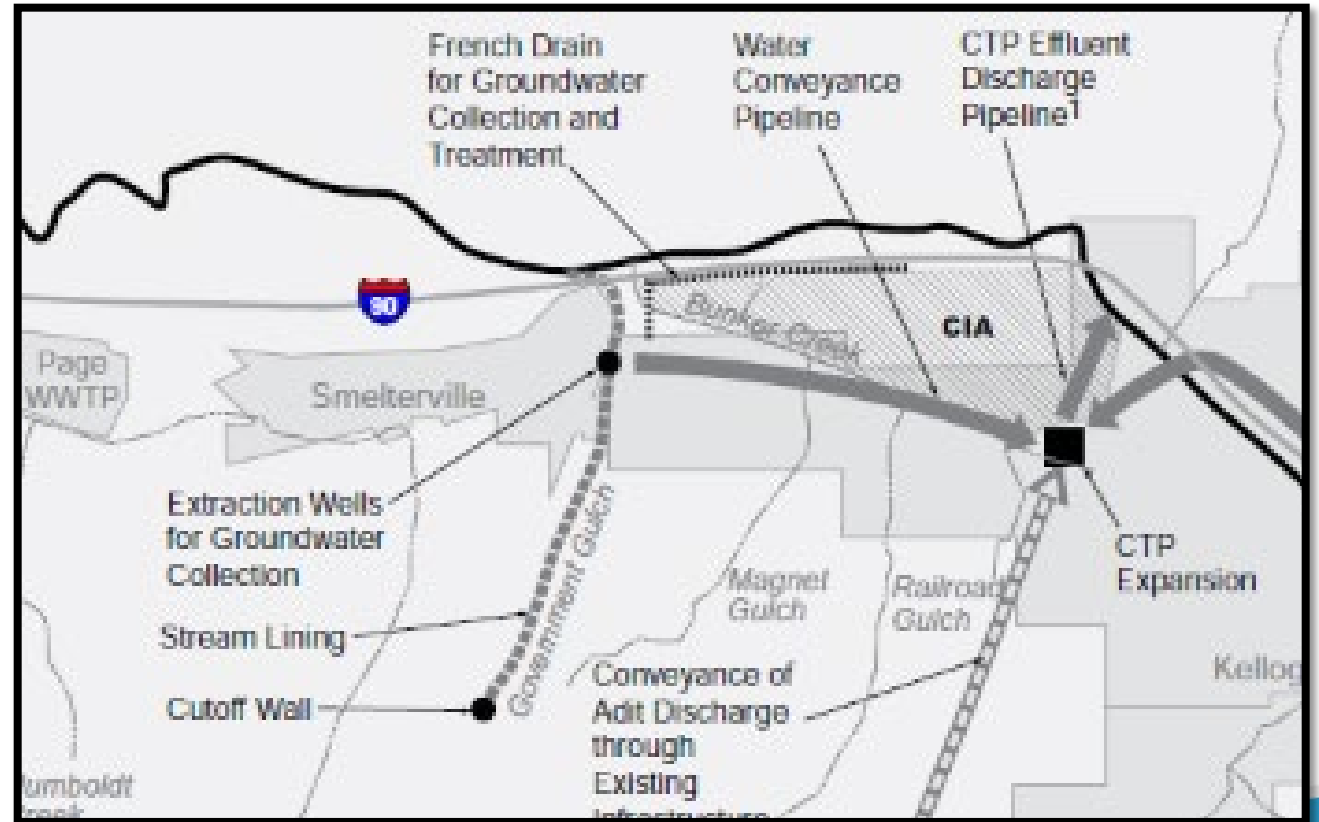
- Consists of peninsula that has formed over time from metal-impacted sediment
- Recreation in shallow water and beach area during summer months
- Design consists of installation of root wads and logs and woody hostile vegetation use
- Construction planned for Fall 2026



Photo by CDA Work Trust

Box Work

- I90 Corridor/GWCS Cap Design
- Government Gulch Modeling and Updated CSM



Sixth Five Year Review

- Evaluates the cleanups across the all three of the Operable Units, including the Box (OU1 & OU2) and the Basin (OU3).
- Evaluates the implementation and performance of cleanups to see if it will continue to protect human health and the environment.
- Identifies issues and provides recommendations for improvement.
- Required to review Superfund sites every five years after cleanup begins.
- 2nd Draft currently being reviewed by the authors, then will start EPA review.
- Anticipated to be completed in September and published in October 2026.



Questions?