



**STREAM RESTORATION AND FISH
PASSAGE IN BIG CREEK 3/11/26 BEIPC**

REBECCA STEVENS- COEUR D'ALENE TRIBE & WADE JEROME- USFS





- BHSS Superfund & NRDA- recap
- Restoration Partnership
- Fish Passage Barrier Removal with Sunshine Mining Company
- Partners and Process
- Project Implementation



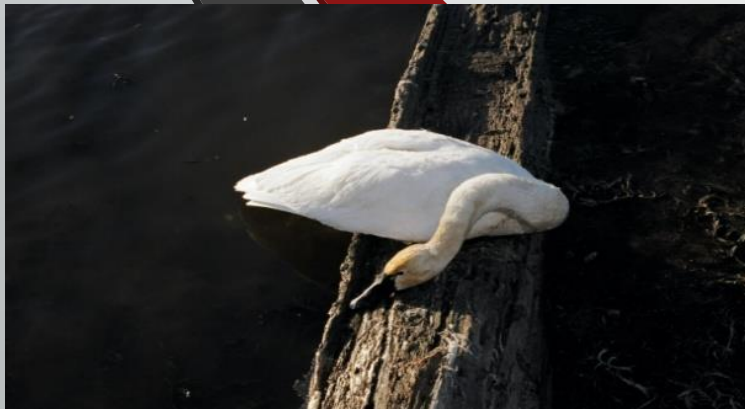
© J. L. ANDERSON
ST. MARY'S, IDAHO

COEUR D'ALENE, INDIANS, PLUMMER, IDA.



NRDAR

Natural Resource Damage Assessment and Restoration



Goal: “Restore, Rehabilitate, Replace, &/or
Acquire the equivalent of injured natural
resources”



Restoration Partnership

Natural Resource Trustees / Trustee Council

U.S. Dept. of the Interior U.S. Dept. of Agriculture

Coeur d'Alene Tribe

State of Idaho

Representative Governments/Agencies





Water , Soils, and Sediment

Migratory Waterfowl



Fish and Aquatic Life



Photo courtesy of Pat Clayton

Photo courtesy of Pat Clayton

Settlements, Bankruptcy, etc.

- 1995- Gulf Pintlar
 - 2000-UPRR
- 2001-Sunshine Mine (bankruptcy, NSR's)
 - 2001-Coeur Callahan
- 2003 & 2007-ASARCO
 - 2011- Hecla





Restoration Plan



Restoration Need

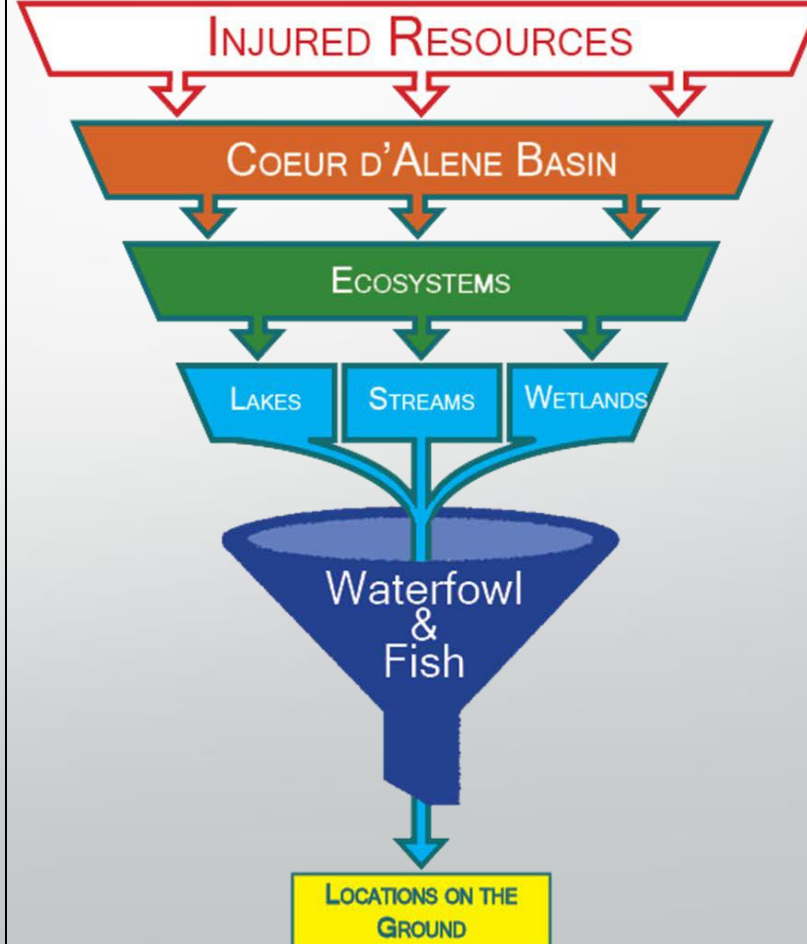
Approach and Values

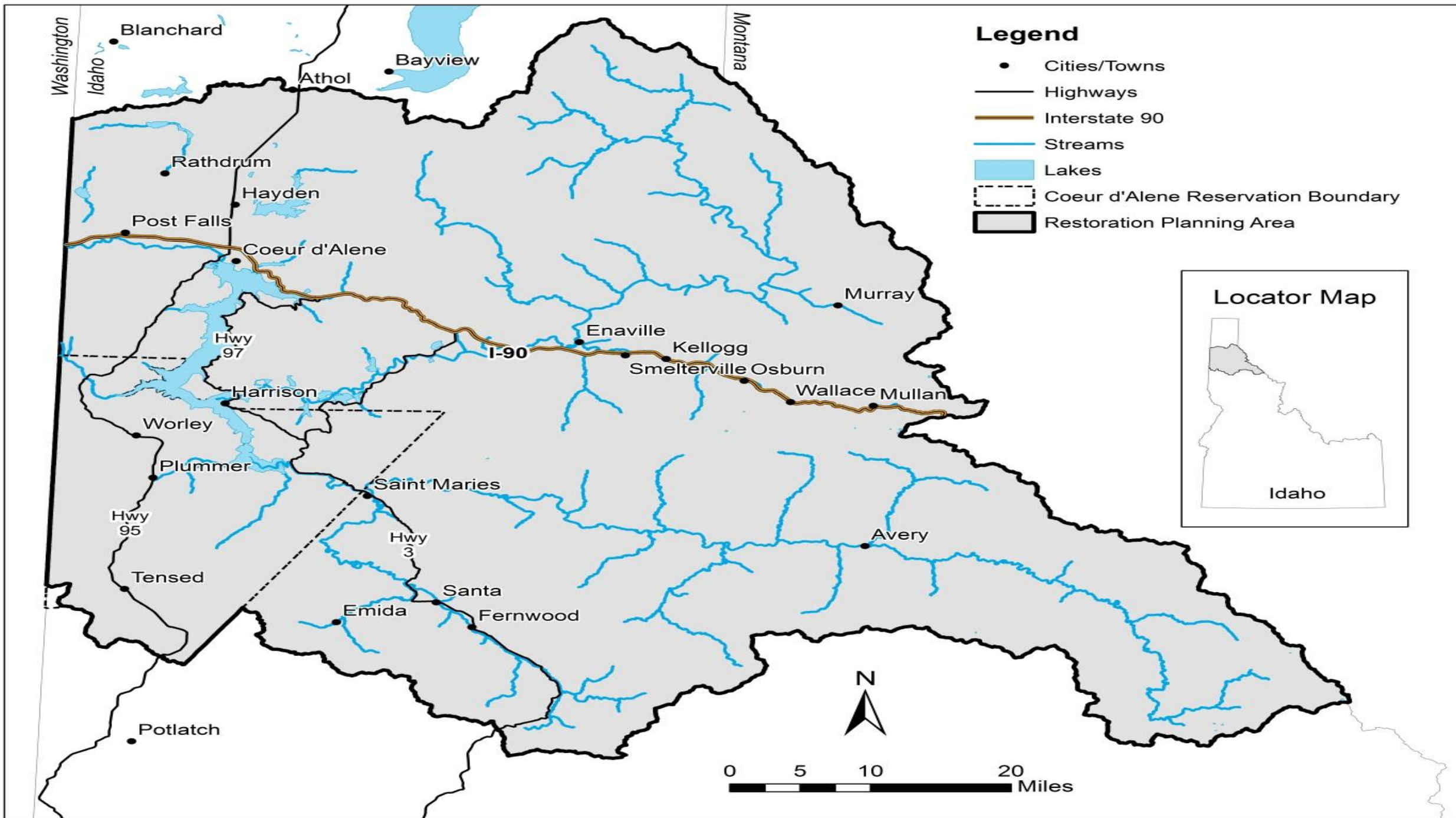
Geographic Prioritization
(Identifying locations on the ground)

Ecological Prioritization
(Identifying goals, major actions, strategies and techniques)

Project Selection
(using selection criteria)

Restoration





**Aboriginal Territory spans across
MT, ID, and WA.
Current boundary is seen
around southern third of the lake**





Remediation compares to Restoration



Sunshine Mining Company submits a proposal



Fish Passage Barrier in a Clean Stream

- CDA Tribe to sponsor
- Big Creek Fish Passage Barrier Removal
- Cost share
- Multiple partners
- Permit needs



Permits 2-year acquisition

- **NEPA/ESD-BLM**
- Survey and design
- 401 WQS, ESA
- Section 106 NHPA
- FEMA No-Rise
- USACE, in stream and Shoshone County floodplain approval
- CDA Tribe tracked progress/notes/contracts





- Big Creek is the second largest tributary to the SFK CDA River
- Clean and Connected
- Westslope Cutthroat Trout
- Flows through diversion in April



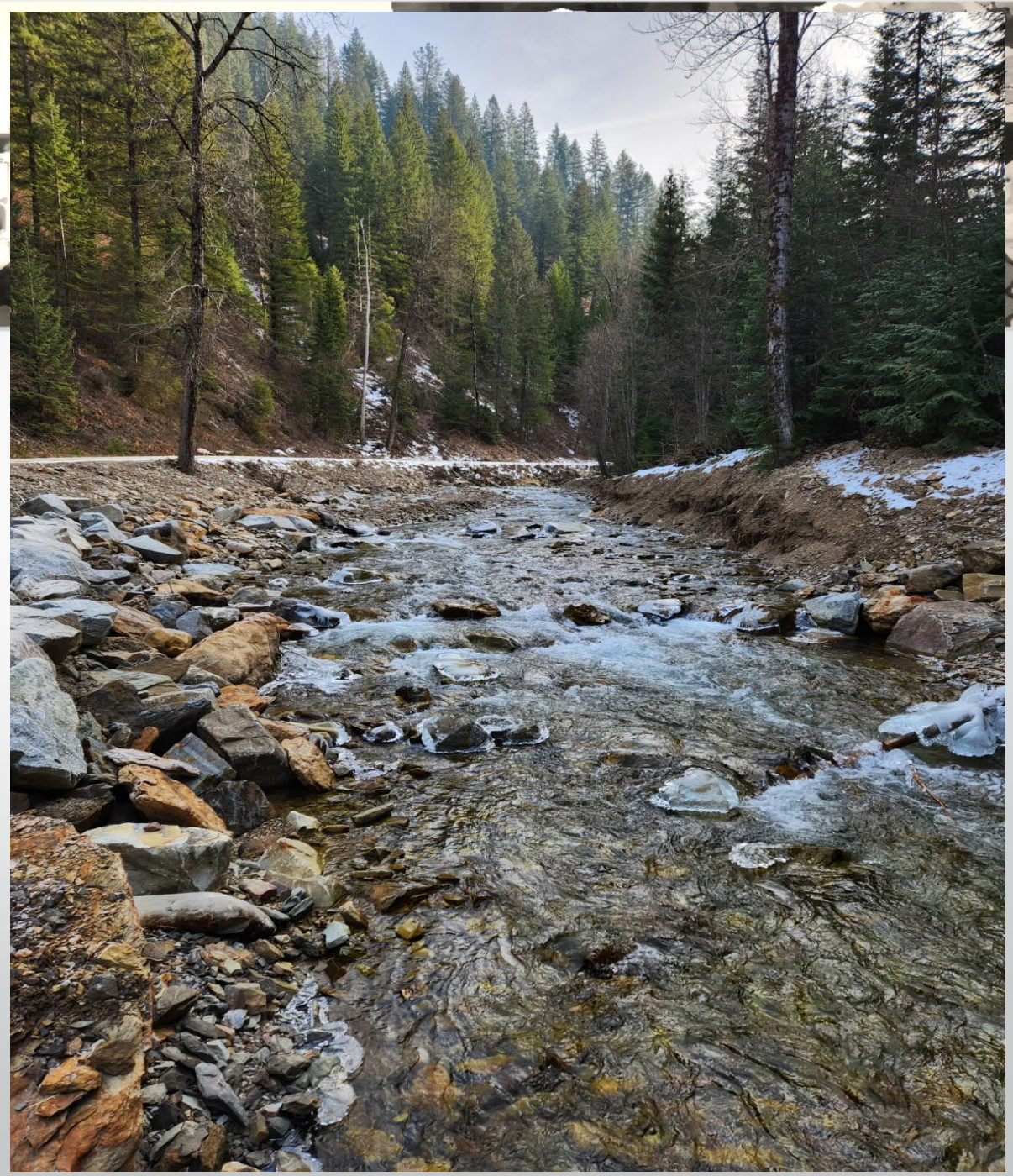
- Main goal: Provide 2 miles of spawning and rearing habitat
- Install new water intake (dry wells) for Sunshine Mine needs
- Instream barbs for infrastructure protection (i.e., road, dry wells, & a little fish habitat)
- Utilize locally sourced rock materials
- Add native seed and plantings for additional stabilization around the stream margins













- November 14th 2025 Project Completed







Process

- Lessons Learned: Cast a wide net for competitive bids
 - Local contractors have a competitive edge considering mobilization
 - Have a consistent presence of contract administration. Quality checks daily during construction “shoot elevations!”
 - Onsite stream restoration professional, this case was the RP USFS rep. Essential!
- This process was different due to the private company nature of Sunshine and Tribal Admin which worked well during gov’t shut down.
 - No records of ‘as built’- discovered on the fly
 - Good ole fashion (Master Services Agreement)
 - 2years planning, 2 weeks implementation 😊
 - Field modifications are a tool, minimize but use as necessary

Common Goals & Objectives



It takes a village



- Construction completed early winter 2025
- Riparian plantings spring 2026
- Future upstream structure removal planned for 2026

