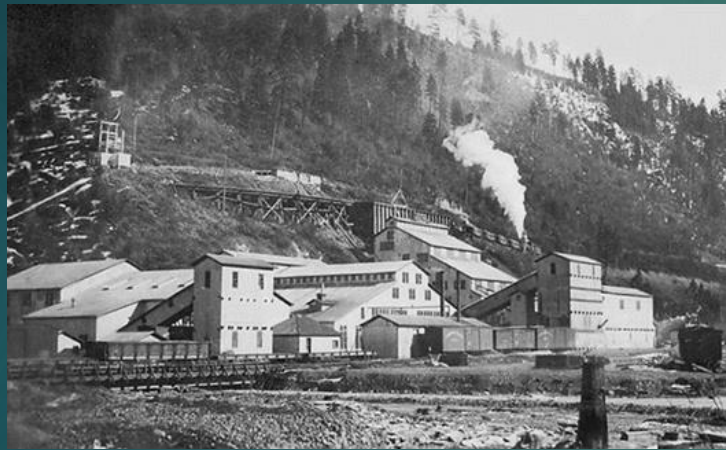




**RESTORATION PARTNERSHIP  
UPDATE: FY25 ACCOMPLISHMENTS  
3/11/26 BEIPC**

## RESTORATION PARTNERSHIP & TRUSTEE COUNCIL

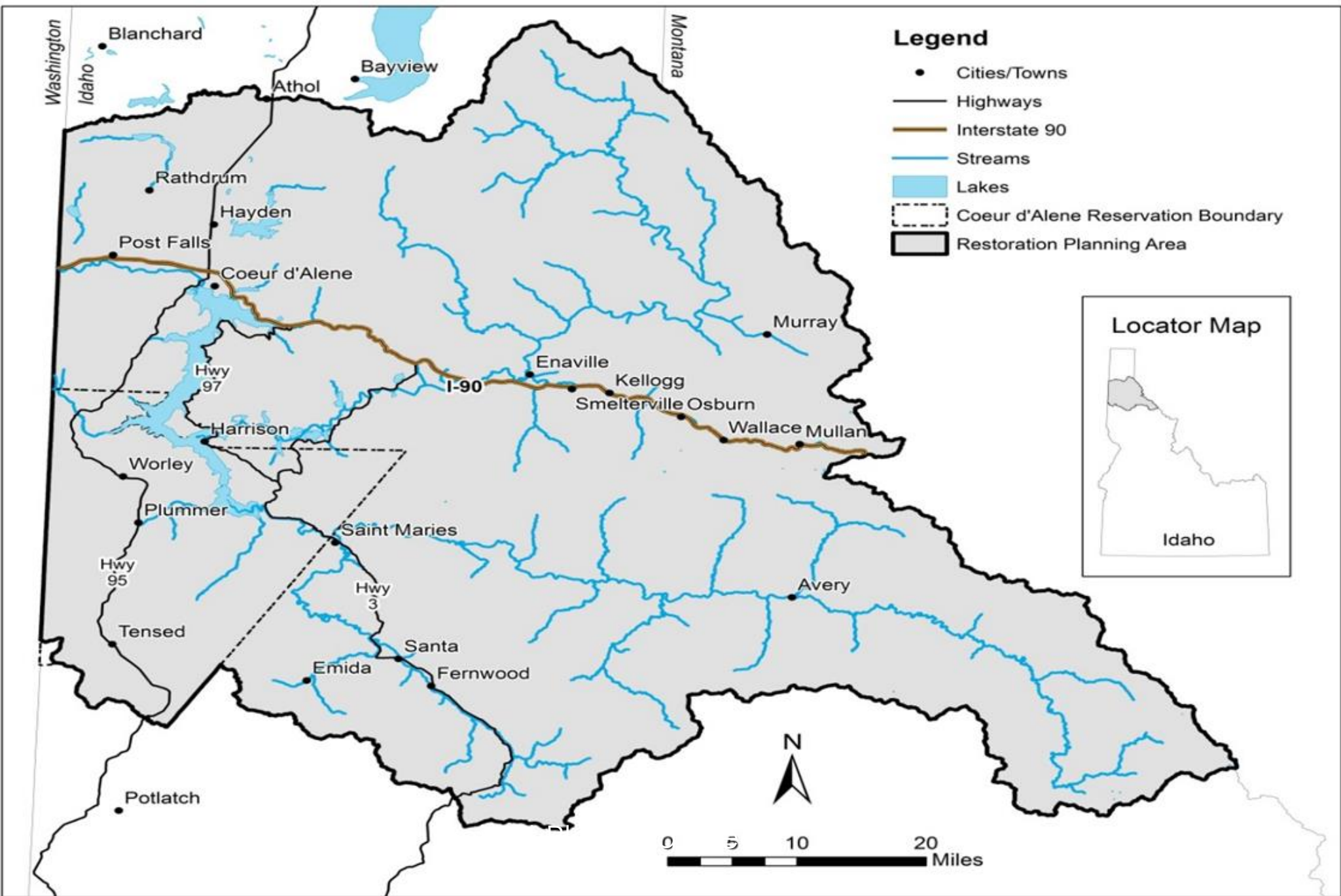
- ▶ U.S. DEPT. OF THE INTERIOR
- ▶ U.S. DEPT. OF AGRICULTURE
- ▶ COEUR D'ALENE TRIBE
- ▶ STATE OF IDAHO



# REMEDIATION VS. RESTORATION

- ▶ REMEDIATE/CLEAN UP HAZARDOUS SUBSTANCES (EPA AND THE WORK TRUST IN THE BASIN & DEQ IN THE BOX)
- ▶ RESTORATION= RESTORE, REHABILITATE &/OR ACQUIRE THE EQUIVALENT OF NATURAL RESOURCES OR ASSOCIATED SERVICES THAT WERE INJURED BY THE RELEASE OF HAZARDOUS SUBSTANCES (RP/NRDA TRUSTEES)





# FY25 ACCOMPLISHMENTS

- ▶ Continued support for ongoing LTO&M for wetlands at the Schlepp Agriculture to Wetlands Conversion Project. For more information visit:  
<https://www.restorationpartnership.org/projects/schlepp.html>
- ▶ The Trustees coordinated quarterly reporting and site visits with the Project Sponsors and Project Leads as appropriate throughout FY25.

# COUGAR BAY STREAM & WETLAND RESTORATION- BLM SPONSOR

- ▶ CULVERT REPLACEMENT AND ~ 800 NATIVE RIPARIAN PLANTINGS INSTALLED.
- ▶ NOXIOUS WEED & ABSINTH WORMWOOD TREATMENTS IN THE FLOODPLAIN & RIPARIAN AREAS
- ▶ EXCAVATOR WORK TO REPAIR BANK EROSION THAT HAD OCCURRED AROUND A VEHICLE STREAM CROSSING



# *GUX HINCH'MCHINMSH* - NATIVE WILLOW NURSERY FOR SUPPORT OF RESTORATION ACTIONS- CDA TRIBE SPONSOR

- ▶ MONITORED GROWTH AND HARVEST OF 7 NATIVE WILLOW SPECIES FOR SUPPORT OF RESTORATION ACTIONS
- ▶ MOWED RGC TO KEEP THE ROWS OPEN FOR POLE AND WHIP AVAILABILITY FOR RP PROJECTS
- ▶ COORDINATION OF HARVEST TIMES WAS ONGOING.



# UX QHESU'LUMKHW (LAND IS GOOD AGAIN): CULTURAL SIGNIFICANT PLANT RESTORATION- CDA TRIBE SPONSOR

- ▶ NEW TRIBAL HORTICULTURALIST TO ESTABLISH A GREENHOUSE AND A NURSERY TO SUPPORT PLANTS OF CULTURAL SIGNIFICANCE
- ▶ WORKED WITH IPNF/USFS NURSERY ON IDENTIFYING SOURCES OF PROPAGULES
- ▶ CONDUCTED BEAVER SURVEYS AND DAM REINFORCEMENTS/ INSTALLED PLANT PROTECTORS,



# CHDELM KHWA CHAT'Q'EL'ET - MONITORING AND MODELING COEUR D'ALENE LAKE'S RESPONSE TO RESTORATION- CDA TRIBE SPONSOR

- ▶ COLLECTED AND ANALYZED WATER QUALITY SAMPLES
- ▶ CONTINUED DATA AND TREND ANALYSIS AND WRITING THE SYNTHESIS
- ▶ WORKED WITH EPA RPM'S ON BUILDING A LAKE DATABASE UNDER THE BEMP



# GRAY'S MEADOW WETLAND CONVERSION/RESTORATION- IDFG SPONSOR

- ▶ HABITAT SHAPING AND REVEGETATION
- ▶ DUST-CONTROL OPERATIONS TO SUPPORT EXCAVATION AND CONSTRUCTION OF LOAFING ISLANDS, EMBANKMENTS, AND OTHER HABITAT FEATURES
- ▶ NATIVE VEG AND WEED MANAGEMENT
- ▶ THE COEUR D'ALENE TRUST CONDUCTS O&M UNTIL 2030.



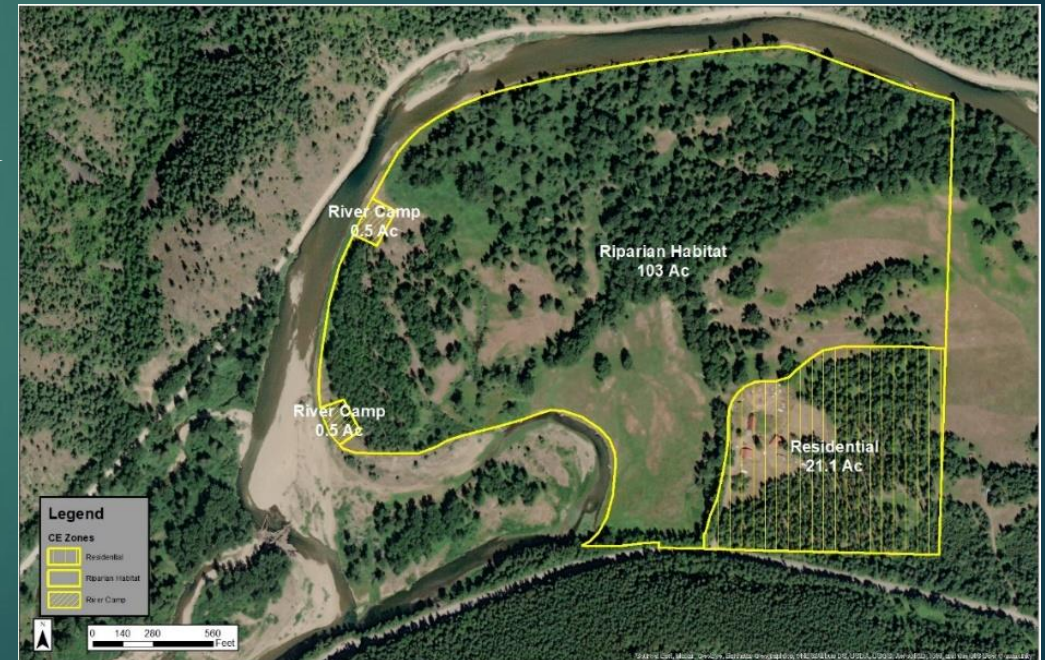
# GENE DAY POND FISHING ACCESS- IDFG SPONSOR

- ▶ PLACED GRAVEL TO RAISE AND REPAIR THE ENTIRE ROAD AND PARKING AREA TO ADDRESS DRAINAGE ISSUES AND PROVIDING A SAFETY BUFFER FROM I90
- ▶ STABILIZED THE HILLSIDE TO PREVENT SOIL FROM WASHING ONTO THE PAD
- ▶ THE CONCRETE POURS WILL BE REVISITED IN 2026 DURING WARMER WEATHER.



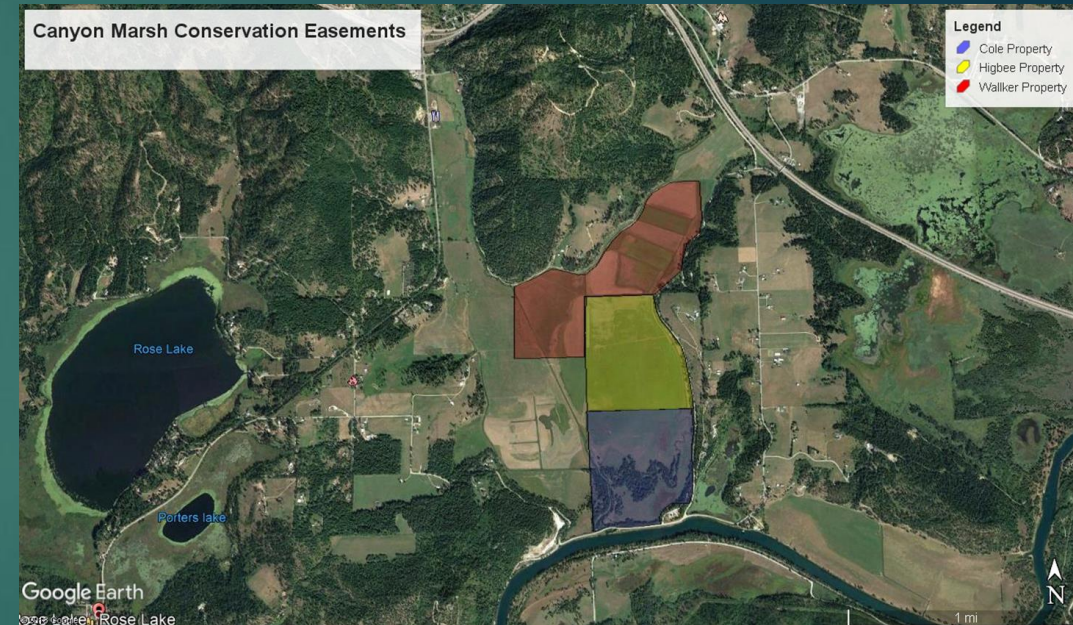
# NFK CDA RIVER C.E.- IDFG SPONSOR

- ▶ INLC AND AVISTA ARE PARTNERS: LETTER OF INTENT MOVING THE C.E. FORWARD
- ▶ THIS C.E. WILL PROVIDE PERMANENT PROTECTION OF THE NATURAL FLOODPLAIN COMMUNITIES AND COLD WATER HYPORHEIC FLOW.



# CANYON MARSH AG TO WETLAND- USFWS SPONSOR

- ▶ COLLECTION OF TOPOGRAPHIC, HYDROLOGIC, AND SOIL AGRONOMIC DATA
- ▶ INLC REPORTS FOR THE BASELINE CONDITIONS OF THE PROPERTIES PRIOR TO WHEN REMEDIAL AND RESTORATION ACTIONS WILL OCCUR



# GLEASON'S MARSH AG TO WETLAND- USFWS SPONSOR

- ▶ USFWS WORKED WITH EPA ON REMEDIAL INVESTIGATIONS WITH REMEDIATION PLANNED FOR 2026
- ▶ AN INTERDISCIPLINARY TEAM WAS ESTABLISHED



# LAKE CREEK WATERSHED RESTORATION- CDA TRIBE SPONSOR

- ▶ NATIVE PLANTS TO INCREASE SPECIES AND FUNCTIONAL DIVERSITY
- ▶ WORKED WITH THE WORLEY HIGHWAY DISTRICT TO REPLACE AGING, UNDERSIZED CULVERTS TO IMPROVE FISH PASSAGE
- ▶ STREAM CROSSINGS RESTORED FOR NATIVE WCTT, IMPROVED CHANNEL STABILITY, AND REDUCED STREAM BANK EROSION.



# PRICHARD CREEK PLANNING AND PHASE 1 IMPLEMENTATION- DEQ SPONSOR

- ▶ PHASE 2 DESIGN CONTRACTOR HIRED
- ▶ DRAFT RISK ASSESSMENT WITH ADDITIONAL FIELD WORK
- ▶ MONITORING PHASE I WILL BE COMPLETED IN FY26
- ▶ COMMUNICATION WITH PROJECT PARTNERS  
& FIELD TRIPS WITH PROJECT PARTNERS



# UPPER LITTLE NFK CDA RIVER RESTORATION- USFS SPONSORED

- ▶ THE BRIDGE DESIGN WORK 95% REVIEW
- ▶ DESIGN COMPLETED FOR THE PLACEMENT OF LWD FOR RIPARIAN RESTORATION AND STREAM HABITAT IMPROVEMENT
- ▶ TU WILL ADMINISTER THE CONTRACTS FOR FISH HABITAT IMPROVEMENT, FLOODPLAIN STABILITY, MICRO-SITE PLANTING, AND THE RESHAPING OF THE FLOODPLAIN
- ▶ IMPLEMENTATION IN THE SUMMER OF 2026.



# UPPER ST. JOE BULL TROUT HABITAT RESTORATION- USFS SPONSOR

- ▶ TU IS A PARTNER FOR THE HABITAT IMPROVEMENT OF BULL TROUT AND WCTT IN RED IVES CREEK,
- ▶ ~ 180 LOGS PLACED IN RED IVES CREEK UP STREAM OF PREVIOUS LOG PLACEMENT EFFORTS,
- ▶ REPLACING THE UNDERSIZED BRIDGE THAT SPANS RED IVES CREEK
- ▶ NEPA PROCESS WAS DELAYED DUE TO LOSS OF PERSONNEL
- ▶ IMPLEMENTATION IN 2026- TARGET



## BEAVER CREEK WATERSHED ENHANCEMENT- USFS SPONSOR

- ▶ ROAD DRAINAGE IMPROVEMENTS & CLOSED ROAD 429B TO PLACE INTO LONG-TERM STORAGE
- ▶ 12 ACRES OF THE PROSPECT GULCH RIPARIAN AREA PLANTED, 4.2 M ROAD DECOMMISSIONING
- ▶ TASK ORDER FOR SURVEY AND DESIGN WORK ON DUDLEY CREEK AND CARPENTER GULCH TO REPLACE EXISTING CROSSINGS W/ AOP
- ▶ PLANTING PLAN FOR CARPENTER GULCH, PROSPECT GULCH, AND HUTCHINS GULCH WHICH WERE BURNED OVER IN THE CHARACTER COMPLEX FIRE



# MIESEN CREEK FISH PASSAGE- IDFG SPONSOR

- ▶ LANDOWNER APPROVAL WAS RECEIVED ON 60% DESIGNS & SENT TO BENEWAH COUNTY FOR REVIEW & PERMITTING
- ▶ ENGINEERING DESIGNS FOR THE CULVERT REPLACEMENT AND STREAM RESTORATION HAVE BEEN PROGRESSING TOWARDS COMPLETION IN EARLY 2026.



# BENEWAH CREEK STREAM & WETLAND RESTORATION IN DROUGHT- CDA TRIBE SPONSOR

- ▶ HEC-RAS) MODEL WAS DEVELOPED TO ILLUSTRATE THE AREA OF ACTIVE FLOODPLAIN WITHIN 5-YEAR FLOOD
- ▶ DRONE FLIGHT DURING HIGH FLOWS, 60% RESTORATION DESIGN, & CWA SECTION 404 PERMIT APPROVED
- ▶ WETLAND RESTORATION W/ LWD, IN-CHANNEL STRUCTURES, REBUILD OF STREAMBANKS & PLANTING OF FLOODPLAIN WETLANDS.



# LAKE CREEK CORRIDOR PROTECTION & ENHANCEMENT- CDA TRIBE SPONSOR

- ▶ THE BASELINE REPORT AND FOREST MANAGEMENT PLAN COMPLETED
- ▶ INLC AND THE TRIBE WORKED THROUGH THE DRAFT C.E. & FINALIZED
- ▶ C.E. TO BE LODGED WITH KC



# BIG CREEK FISH PASSAGE BARRIER REMOVAL- CDA TRIBE SPONSOR

- ▶ 1 OF 2 LARGEST WATERSHEDS IN SHOSHONE COUNTY FREE OF MINE WASTE CONTAMINATION, AND COLD WATER REFUGIA
- ▶ ALL PERMITS SECURED, SHEET PILE AND CONCRETE STRUCTURE REMOVED, AND STREAM BARBS INSTALLED
- ▶ DRY WELLS INSTALLED
- ▶ PLANTING WITH BLM SPRING 2026



# AOP SURVEYS AT STREAM CROSSINGS

- ▶ COMPLETED QA/QC PLAN
- ▶ CONTRACTED WITH TROUT UNLIMITED FOR FIELD SURVEYS
- ▶ FISH PASSAGE BARRIER DATA UPLOADED TO:  
[HTTPS://INTERAGENCY-BIL-FISH-PASSAGE-PROJECT-1-FWS.HUB.ARCGIS.COM/](https://interagency-bil-fish-passage-project-1-fws.hub.arcgis.com/)



# PALEOLIMNOLOGY OF COEUR D'ALENE LAKE FROM PRE-DISTURBANCE TO MINING IMPACTS AND PRESENT DAY WAS AWARDED (CDA TRIBE SPONSOR

- ▶ THE FUNDS FOR THIS PROJECT WERE JUST RELEASED IN DECEMBER 2025 THEREFORE THERE IS NO WORK TO REPORT
- ▶ AVISTA IS PROVIDING MATCHING FUNDS FOR THIS WORK





# QUESTIONS?

- ▶ 21 PROJECTS UNDERWAY, LTO&M PLANNING
- ▶ TOTAL EXPENDITURES IN FY25: \$2,117,139.19
- ▶ FUTURE PROJECT IDEA SOLICITATION IN 2026-27

