



TECHNICAL LEADERSHIP GROUP (TLG)

PROVIDES TECHNICAL AND REGULATORY ADVICE TO THE BEIPC

REBECCA STEVENS, COEUR D'ALENE TRIBE, CURRENT TLG CHAIR



WHO AND WHAT

- Federal, State, local, and Tribal representatives serving the governmental entities with regulatory or land management responsibilities in the Basin, that may be affected by remedial actions.
- Help satisfy all regulatory requirements and remedial action objectives for heavy metal contamination;
- Provide direct advice to the BEIPC Board;
- Provide a forum for dialogue on individual project affects and opportunities to minimize impacts to affected stakeholders;

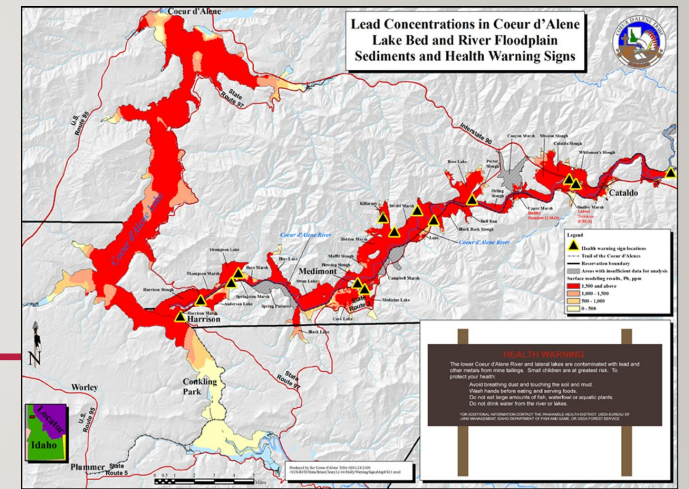


SERVES THE BEIPC BOARD



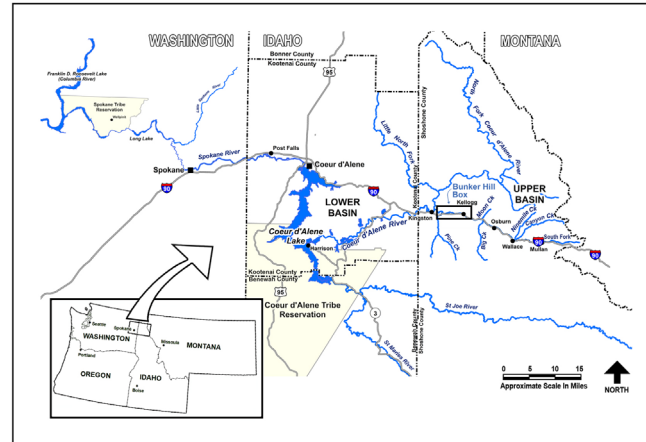
-
- Assist in assuring ARAR's are considered;
 - Assure that governments coordinate with Basin cleanup efforts;
 - Provide conduits for information exchange and learning;
 - Considers CCC comments but is not a public forum.
 - Assist in development of the technical aspects of the remedial program implementation decision-making;
 - Monitor the effectiveness of Basin cleanup; and
 - Other matters as may be directed by the BEIPC.

MEETS BI-ANNUALLY



- I vote per government;
- Elected officers and not subject to Idaho Code §§ 74-201 through 74-208
- Assists the BEIPC E.D. and Admin in developing Annual Workplans and Accomplishment Reports prior to Board comment and approval;
- Always available to the Board; and
- All expenses associated are the responsibility of the TLG rep governments

NEXT MEETING 10/14/25



QUESTIONS?

Rebecca.stevens@cdatribe-nsn.gov or Jamie.Brunner@deq.idaho.gov