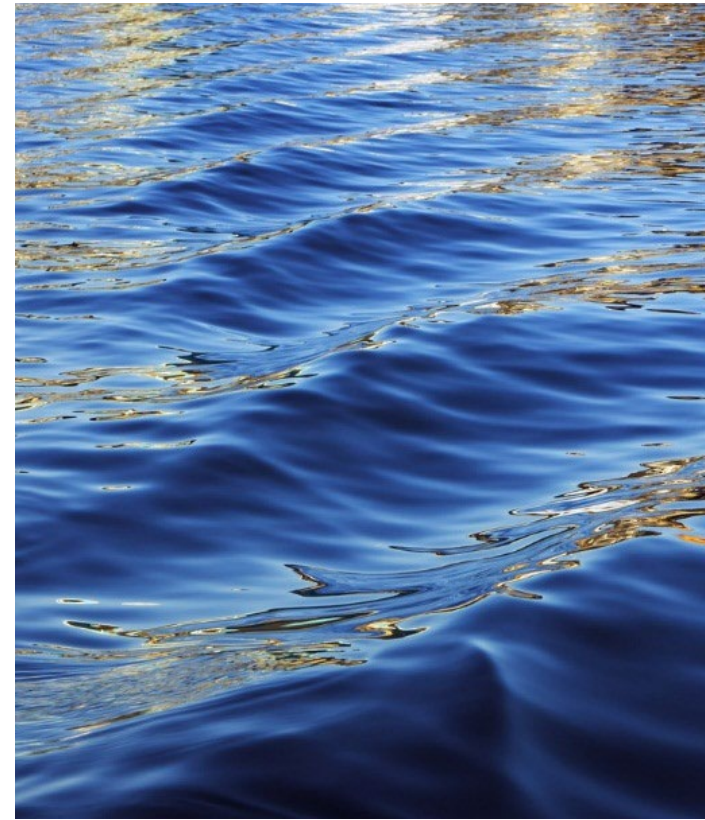




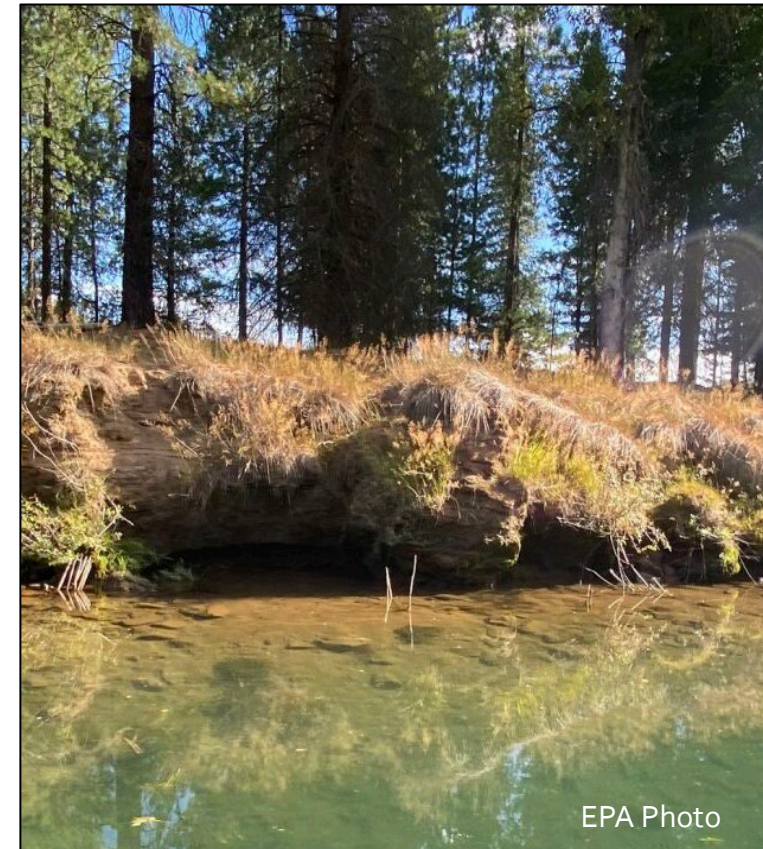
# Lower Basin Prioritization Plan

Basin Commission  
May 28, 2025



# What does the plan do?

- Provides an initial approach towards prioritizing remedial actions and related data gap investigations
- Re-evaluates annual prioritizations and the 10-year plan for both Upper Basin and Lower Basin
- Helps select pilot projects
- Applies an adaptive framework to guide pilot projects and remedial actions
- Divided into three site categories:
  1. Riverbeds and banks
  2. Wetlands and lateral lakes
  3. Recreational sites



EPA Photo

# Where can you find it?

Environmental Topics

Laws & Regulations

About EPA

Search EPA.gov



[Contact Us](#)

## Superfund Site:

Superfund Home

This Site's Home Page

Site Contacts

Cleanup Activities

Health & Environment

Stay Updated, Get Involved

Redevelopment

**Site Documents & Data**

Photos, Videos & Audio

View Site on Map

## BUNKER HILL MINING & METALLURGICAL COMPLEX SMELTERVILLE, ID Site Documents & Data

For assistance with 508 Accessibility, please reach out to the [Site Contacts](#).

### On this page:

- [Featured Documents](#)
- [Reports and Documents](#)
- [Administrative Records](#)
- [Site Data](#)
- [Public Information Repositories](#)

[Sign up](#) for this Superfund site's mailing list

<http://epa.gov/superfund/bunker-hill>



# Where can you find it?

## Reports and Documents

Note: Large collections may take longer to load.

- [Key Documents \(9 documents\)](#)
- [Basin Bulletin Newsletters \(28 documents\)](#)
- [Basin Environmental Monitoring Program \(7 documents\)](#)
- [Basin Property Cleanups \(4 documents\)](#)
- [Bunker Hill Decision Documents \(11 documents\)](#)
- [Coeur d'Alene Basin Remedial Investigation/Feasibility Study \(43 documents\)](#)
- [Community Involvement \(135 documents\)](#)
- [East Fork Nine Mile \(5 documents\)](#)
- [East Mission Flats Repository \(13 documents\)](#)
- [Five-Year Reviews \(5 documents\)](#)
- [Lower Basin \(25 documents\)](#)
- [Remedy Protection \(5 documents\)](#)
- [Reports and Studies \(1 documents\)](#)
- [Wallace Yard Publicly Available Documents \(3 documents\)](#)

## Reports and Documents

[Tips on Locating Documents from the Table Listing](#)

You will need the free Adobe Reader to view some of the files on this page. See [EPA's PDF page](#) to learn more.

Show 5 entries

Search:

### Search for Lower Basin

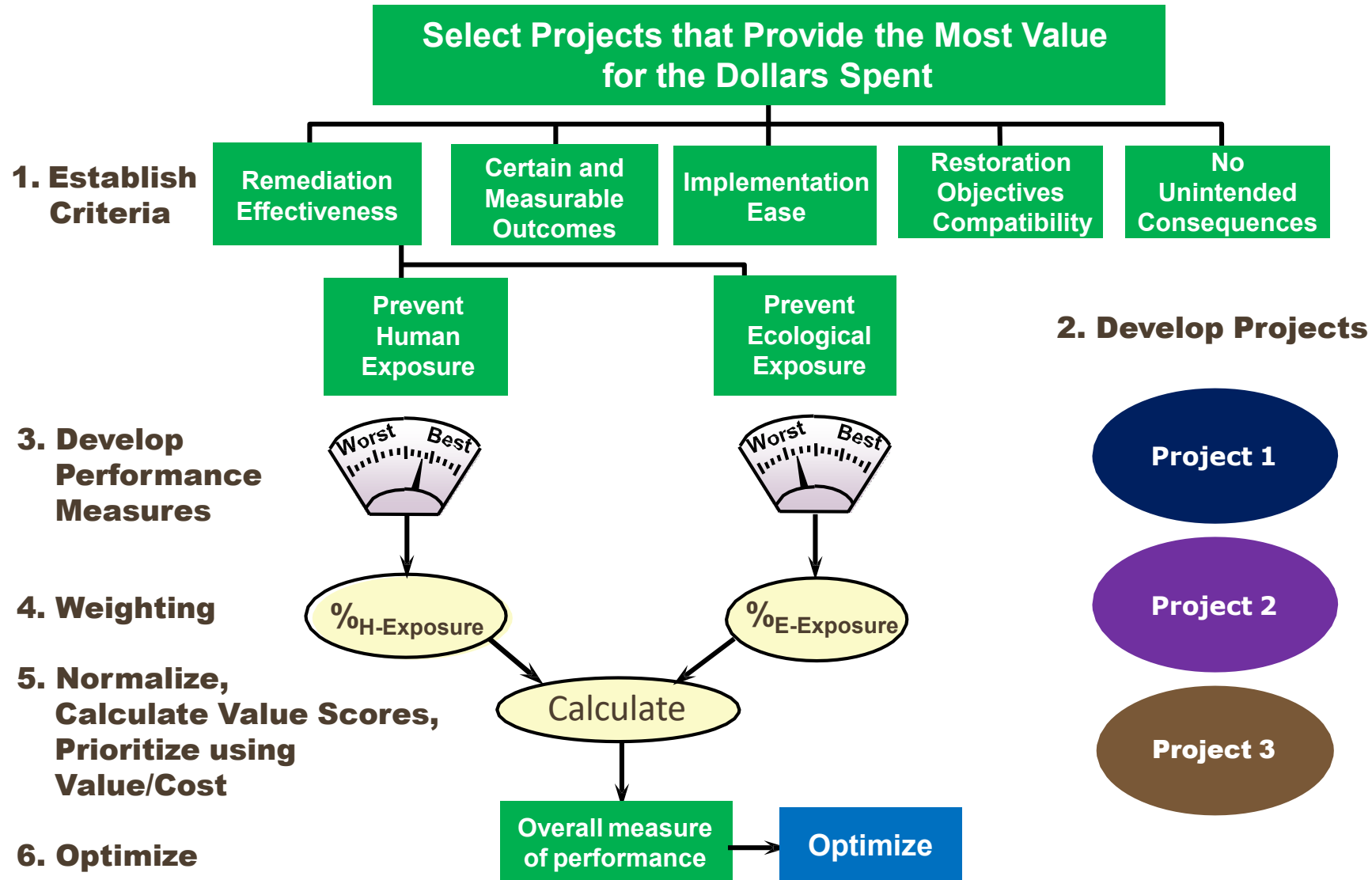
Date	Title	Doc ID	Author	Addressee
<input type="text" value="Search Date"/>	<input type="text" value="Search Title"/>	<input type="text" value="Search Doc ID"/>	<input type="text" value="Search Author"/>	<input type="text" value="Search Addressee"/>
10/30/2024	<a href="#">Lower Basin Prioritization Plan, October 2024.</a> (122 pp, 43.45 MB)	100589579	(Maul Foster & Alongi, Inc.); (CDM Smith); (Pioneer Technical Services, Inc.)	(Successor Coeur D'Alene Custodial and Work Trust)

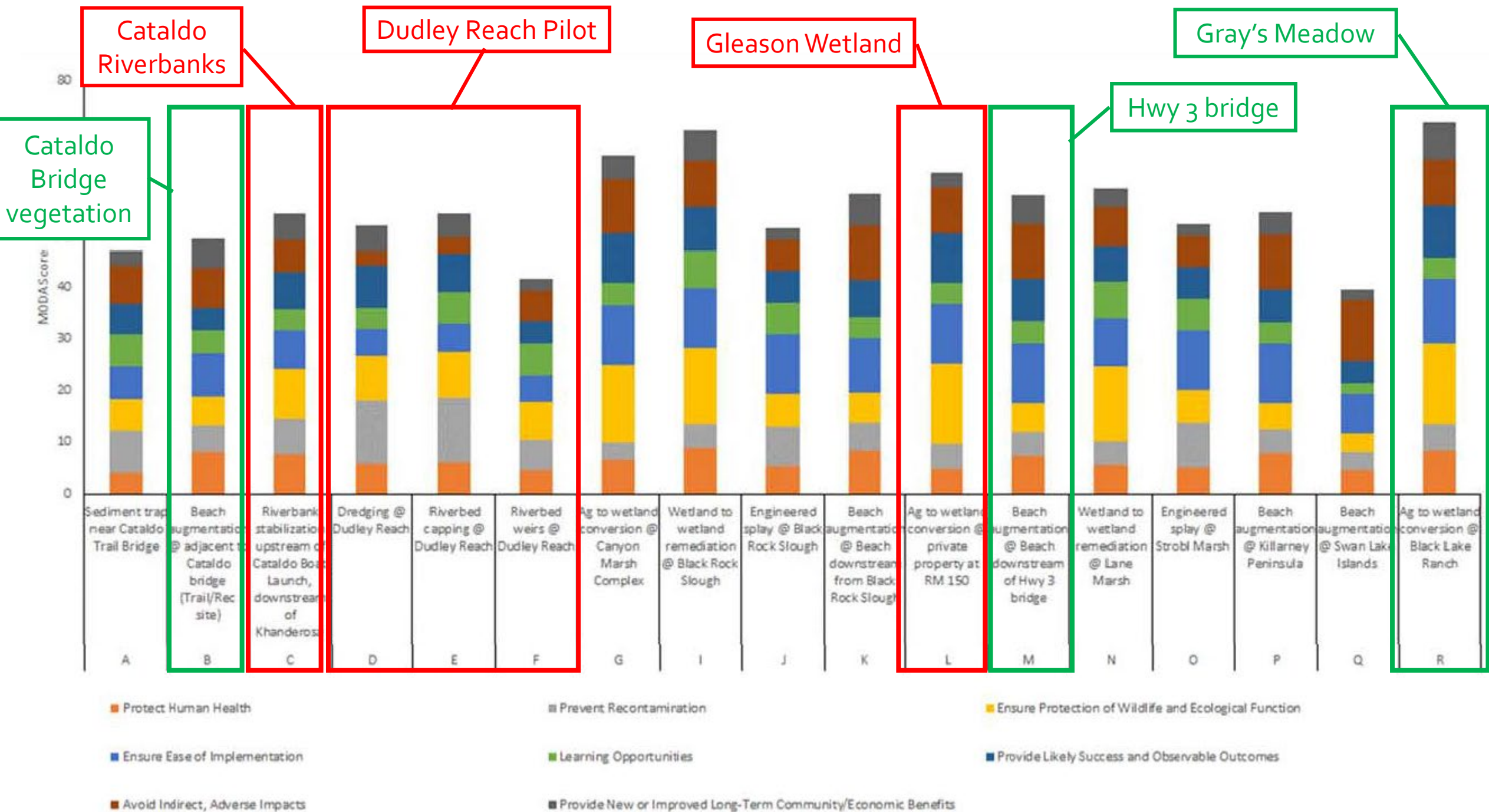
<https://semspub.epa.gov/src/document/10/100589579>

## Developed from a combination of past collaborative efforts

- Multi-Objective Decision Analysis (MODA) Process – 2017 to 2019
  - Evaluation of potential projects in the Lower Basin that were ranked to identify highest priorities
- Framework for a Strategic Plan for the Lower Basin – 2018
  - Describes requirements, goals, and objectives for planning cleanups in the Lower Basin
- Adaptive Management Project Management Plan – 2020
  - Provides analysis tools and techniques to support adaptive decision-making, planning, and prioritization of cleanups in the Lower Basin

# 2019 Multi-Objective Decision Analysis (MODA) Process





# Framework for a Strategic Plan for the Lower Basin (2018)

- Fundamental requirements
  1. Apply CERLCA to achieve appropriate and feasible remedies
  2. Manage available financial resources and provide stewardship of funds
- Goals for Cleanup
  1. Reduce risks to people
  2. Reduce risks to wildlife and aquatic resources
  3. Control sources of contamination
  4. Promote long-term stewardship
- Process objectives
  1. Coordinate with partners and community outreach
  2. Utilize analysis tools and techniques

<https://semspub.epa.gov/work/10/100092372.pdf>

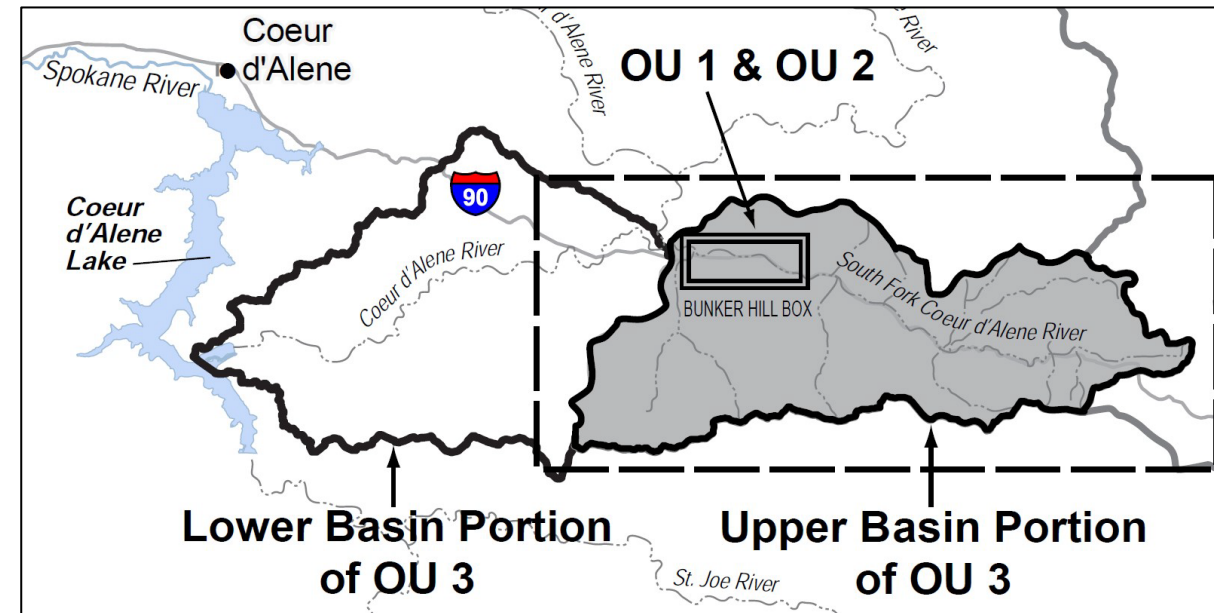


# Adaptive Management Project Management Plan (2020)

- Framework for decision-making, planning, and prioritizing cleanups
- Provides tools and techniques to help:
  1. Supplement the Enhanced Conceptual Site Model (ECSM) to continue improving our understanding of contaminant sources and transport mechanics
  2. Optimize the Basin Environmental Monitoring Program (BEMP) to evaluate effectiveness of the cleanups
  3. As needed, use the MODA process to incorporate stakeholder input during prioritization and sequencing of work in the Lower Basin

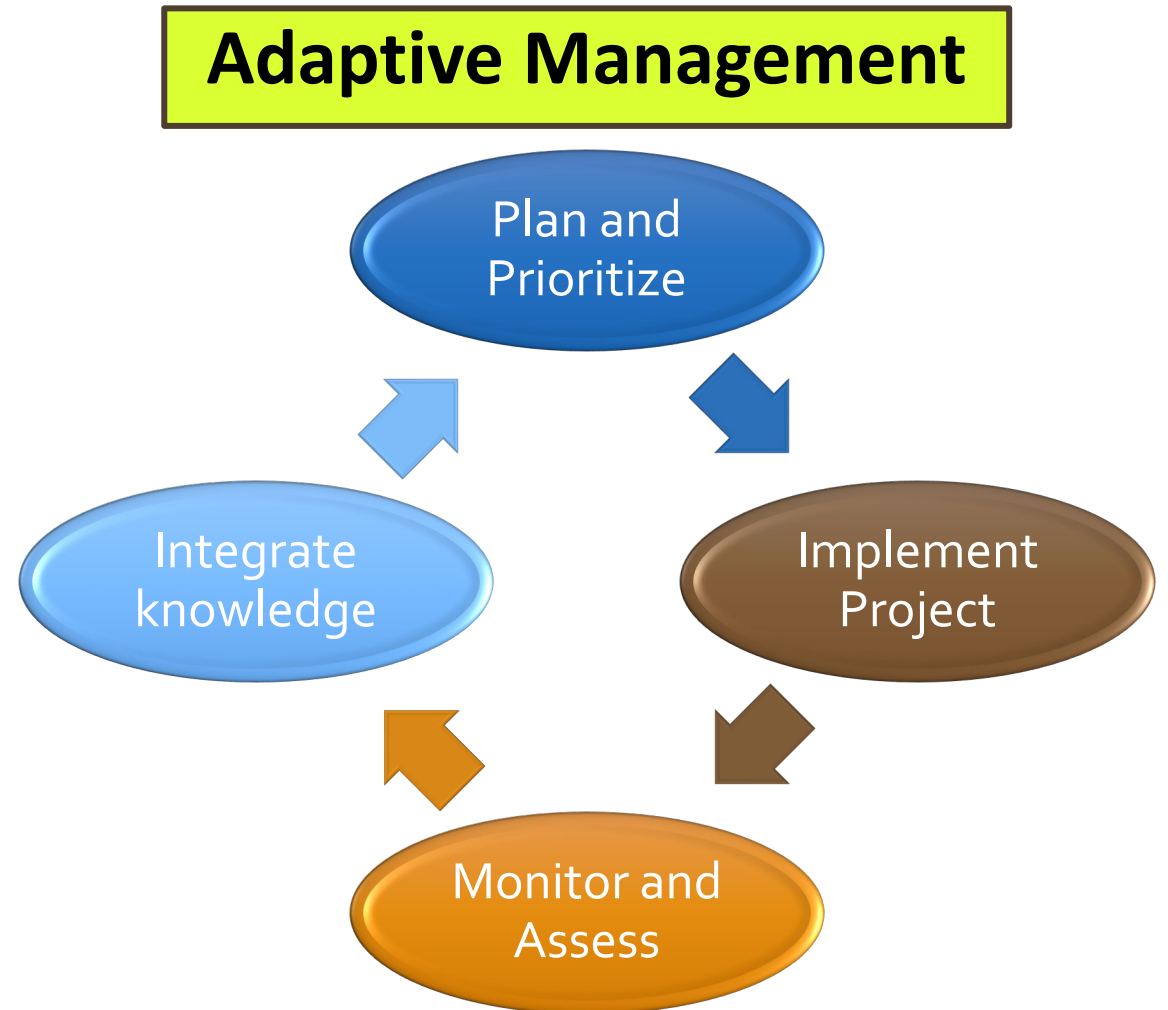
# Why is it needed?

- Lots of work to do!
- Tackle the biggest sources of contamination
- Flexibility
- Must be balanced with work in the Upper Basin:
  - Mine and mill sites, repositories, Basin Property Remediation Program, recreational sites, and more...



# How will it be used?

- Created initial prioritization
- Site-wide prioritization is revisited annually
- Update the 10-year plan
- Balance work between Upper Basin and Lower Basin
- Work within the Trust's annual budget (\$30 million per year)





# Initial Priorities

Riverbed and Banks

Wetlands and Lateral Lakes

Recreational Sites with Risks to People's Health





# Dudley Reach Scour Hole Pilot Project



## Pilot Project Goals

- Reduce downstream migration of particulate lead from the riverbed and banks while minimizing adverse system responses.
- Develop means and methods for technology applications elsewhere in the Lower Basin
- Establish monitoring methods for assessing remedy performance.

## ROD Benchmark

- 50% reduction in particulate lead loading during high flow events



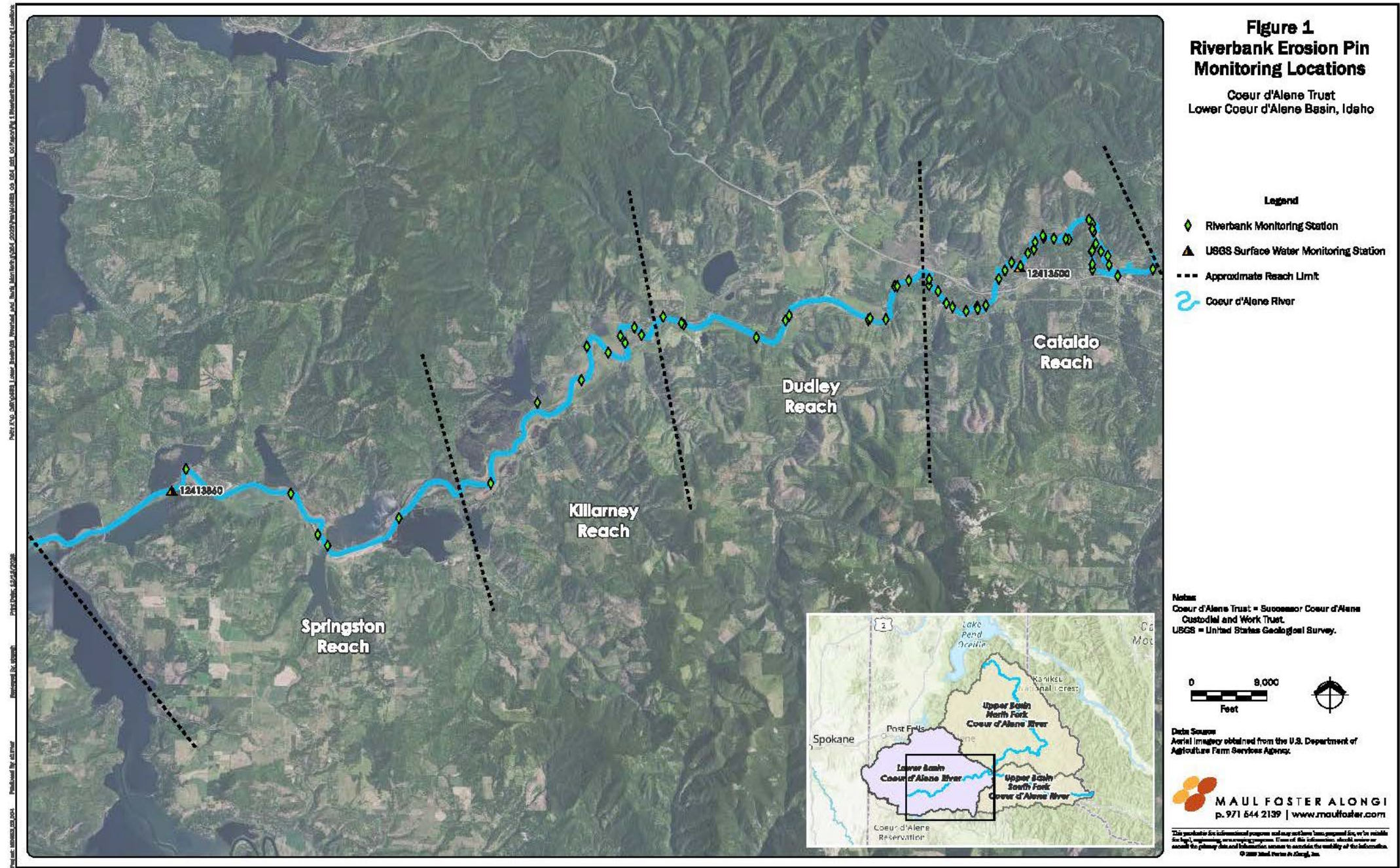
# Riverbank Monitoring

- Monitoring Goals
  - Understand location and extent of riverbank types
  - Understand nature and extent of metals concentration
  - Evidence of recreational use
  - Understand bank erosion rates and lead loading
- How do we achieve these goals?
  - Riverbank Inventory
  - Erosion pins
  - Sediment samples
  - Riverbank wedge sampling
  - Stratigraphy



Photo courtesy of CDA Trust

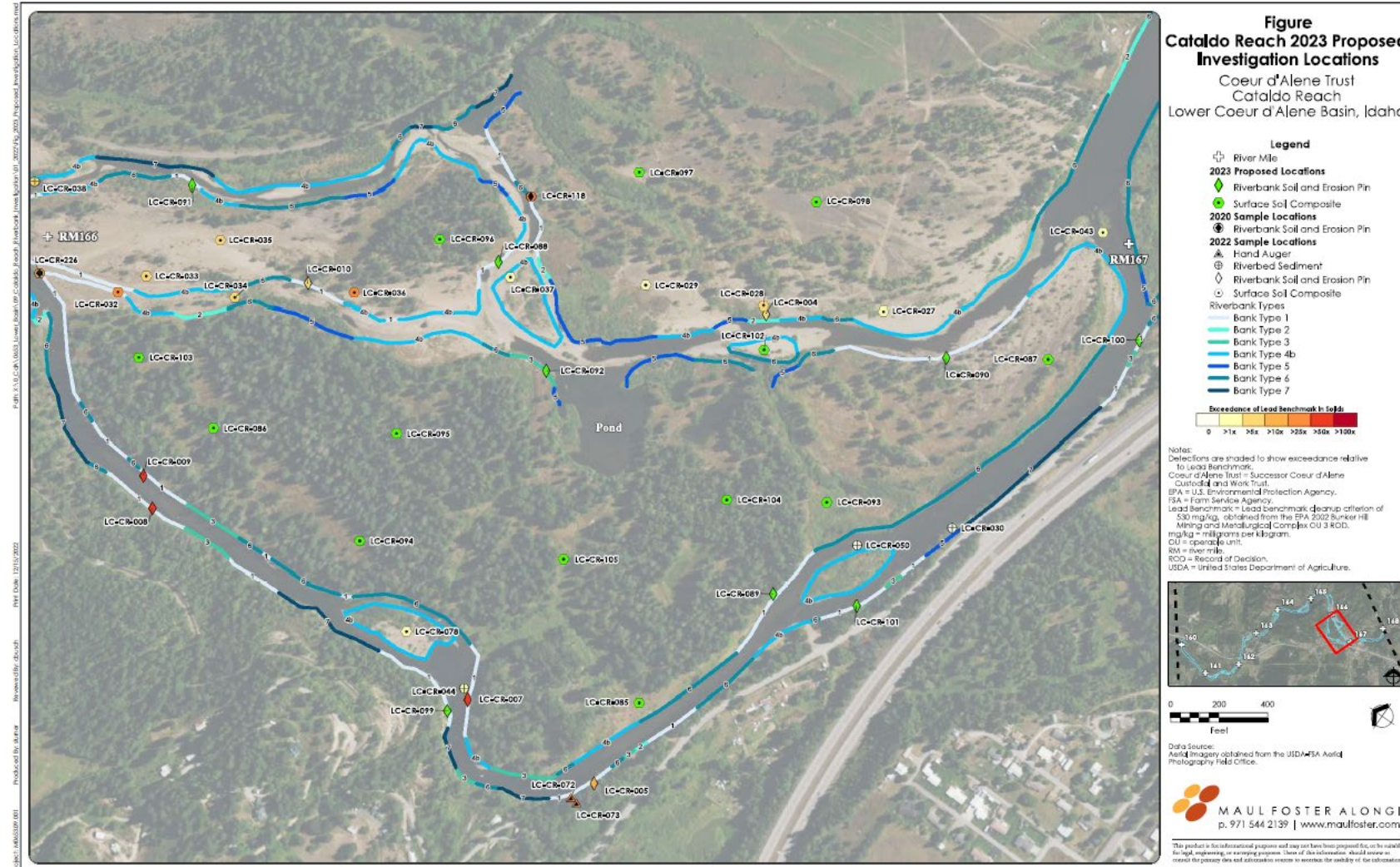






# Cataldo Reach

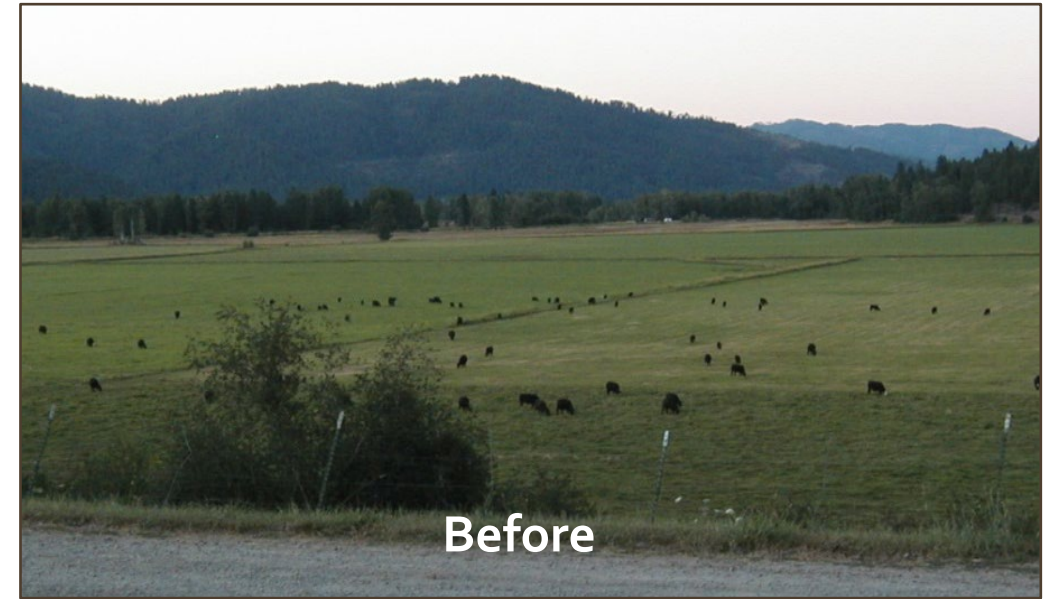
- 36 monitoring stations
- 4 banks have had one or more pins completely erode out
- In 2023, highest erosion rate was observed in Cataldo
- In 2024, focused on bank types 1-3 (highly erodible) and the island between RM 166-167.





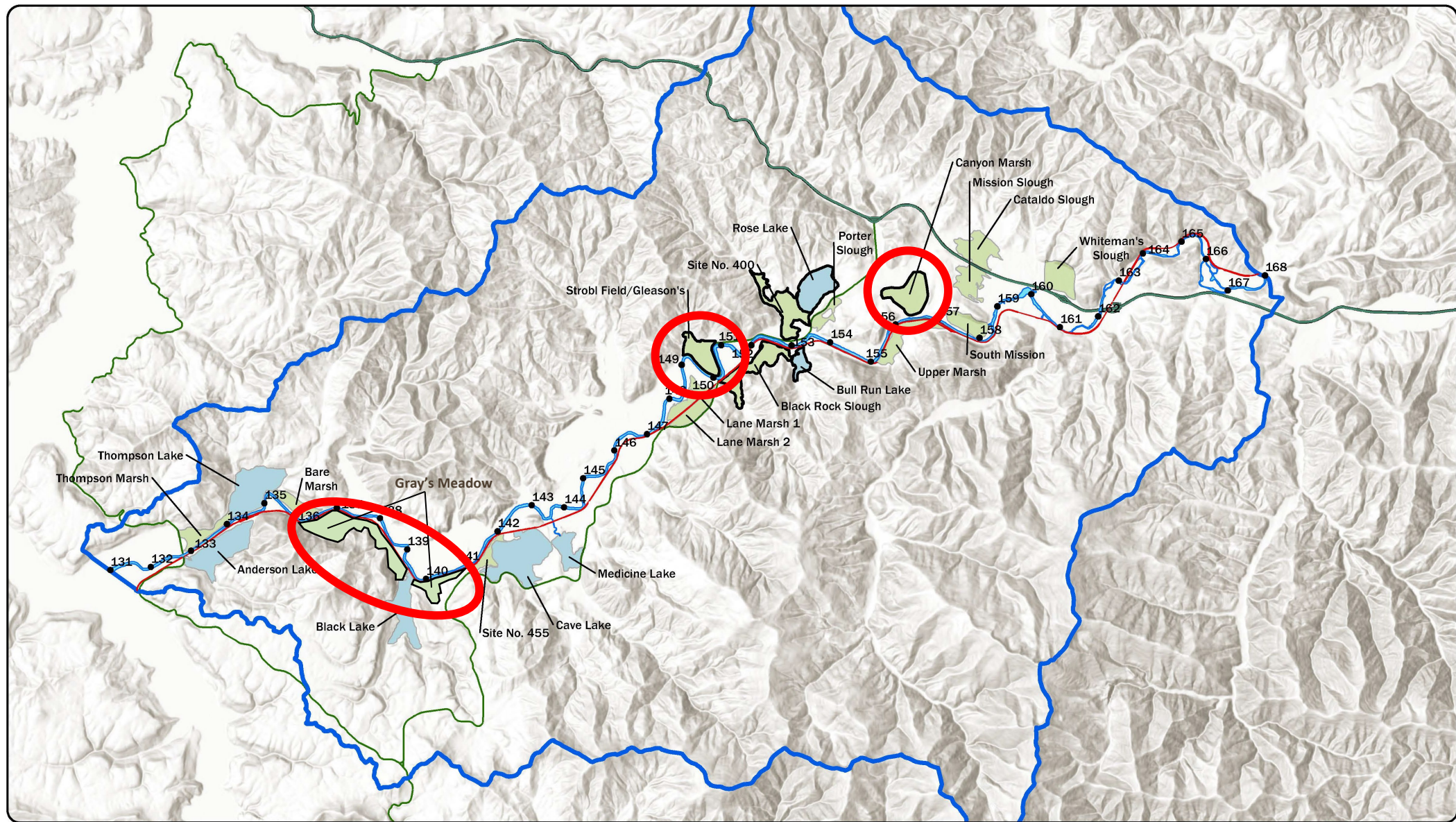
# Wetlands and Lateral Lakes

- Gray's Meadow (695 acres)
  - Ag-to-wetland conversion
  - Under construction until end of 2025
  - O&M starts in 2026
- Gleason Wetland (270 acres)
  - Ag-to-wetland conversion
  - Pre-Design Investigation began in 2022
  - Design starts in 2026
- Canyon Marsh (349 acres)
  - Existing mix of wetland and ag-land
  - Pre-Design Investigation starts in 2027
  - Design starts in 2031



Schlepp Ag-to-Wetland Conversion Project







# Recreational Sites

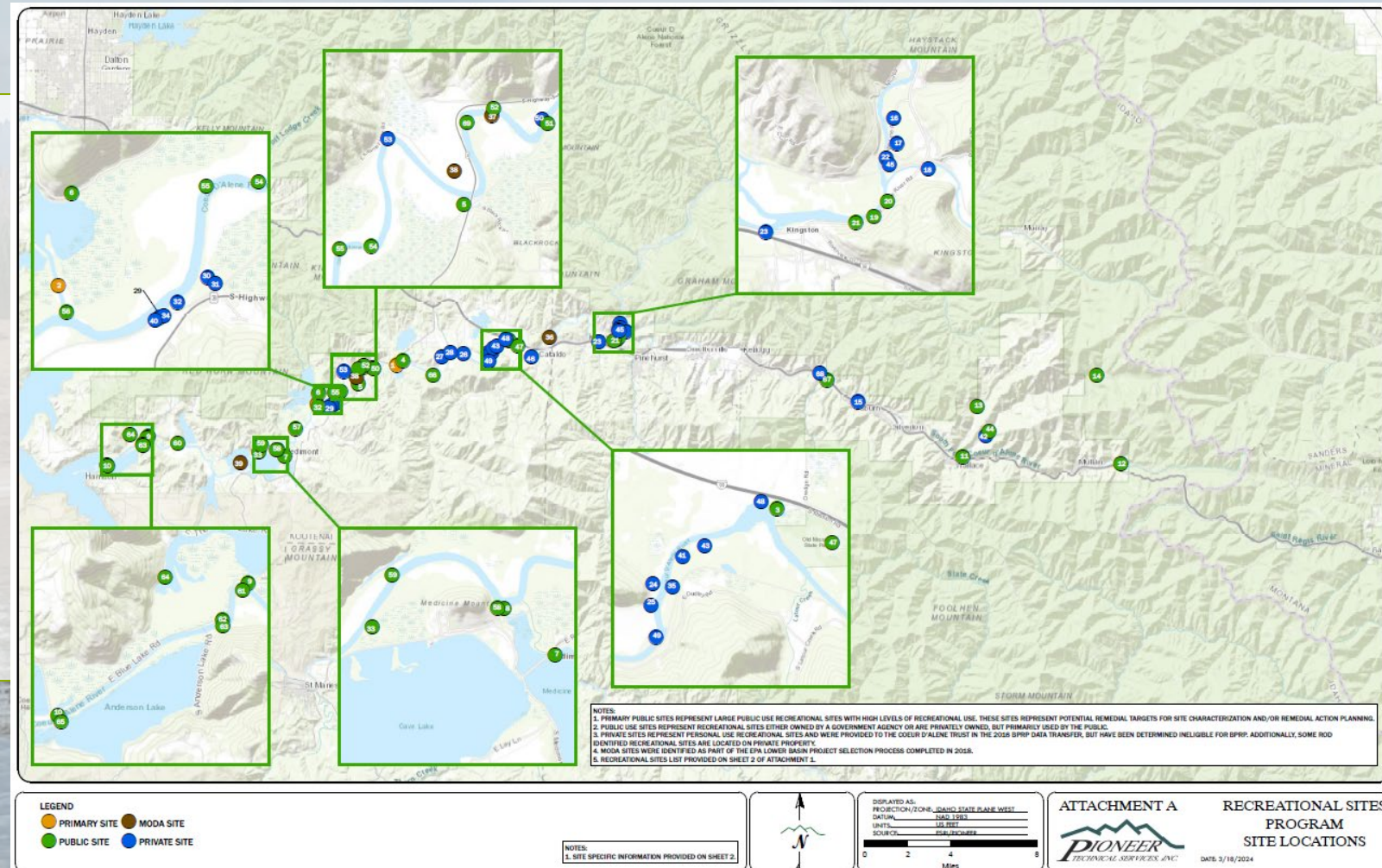
- Goal:
  - To reduce people's exposure to lead and other metals in areas used regularly for recreational purposes
- Challenges:
  - Recontamination from high water events
  - Remote, continuously changing
- Examples of work:
  - Capping
  - Hard landscaping
  - Signage
  - Revegetation
  - Education
  - Cleanup





# Recreational Site Categories

- Primary Public Sites (2)
- Public Sites (35)
- MODA Sites (4)
- Private Sites (28)



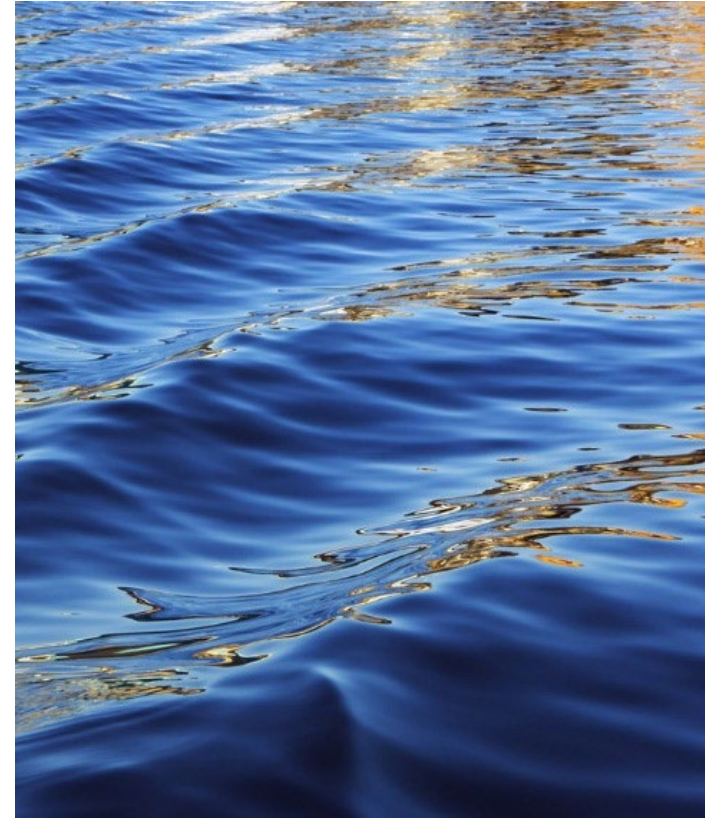
Killarney Beach Peninsula: Primary Public Site. Photo & Map courtesy of Pioneer.



A close-up photograph of vibrant green grass blades, slightly out of focus, occupying the left side of the slide.

**Thank you!**

**Questions?**



A blue starburst graphic with a yellow outline, containing the text "It's time for the 6th Five-Year Review!".

## **It's time for the 6<sup>th</sup> Five-Year Review!**

- Evaluates the cleanups across the all three of the Operable Units, which includes the Box (OU1 & OU2) and the Basin (OU3).
- Evaluates the implementation and performance of cleanups to see if it will continue to protect human health and the environment.
- Identifies issues and provides recommendations for improvement.
- Required to review Superfund sites every five years after cleanup begins.
- Starting the review now! Must be completed by September 30, 2026.