

Bunker Hill Recreational Sites Program



Jennifer Crawford, EPA



Recreational Sites Interagency Workgroup

- Implement the rec sites program with EPA as lead
- Conduct outreach
- Leverage shared resources and local observations
- Identify new areas of use
- Meet twice a year: Spring and Fall
- Members include:
 - Basin Environmental Improvement Project Commission (BEIPC)
 - Coeur d'Alene Tribe
 - Coeur d'Alene Trust
 - Idaho Dept of Fish and Game (IDFG)
 - Idaho Dept of Environmental Quality (IDEQ)
 - Idaho Dept of Parks and Recreation (IDPR)
 - Panhandle Health District
 - US Forest Service (USGS)
 - US Bureau of Land Management (BLM)

Types of Recreational Sites

- Private Property
- Public Property
 - Accessible & high use public property

Site lists come from:

- Decision documents (RODs)
- Public use surveys @ outreach events
- Multi-Objective Decision Analysis (MODA)

Focus is on PUBLIC & ACCESSIBLE properties to reduce risk. Other programs may also apply.

Types of Recreational Site Actions

- Cleanup of high priority public sites
- Plant Vegetation
- Install Signs
- Fencing and access controls
- Create new areas
- Outreach at public events

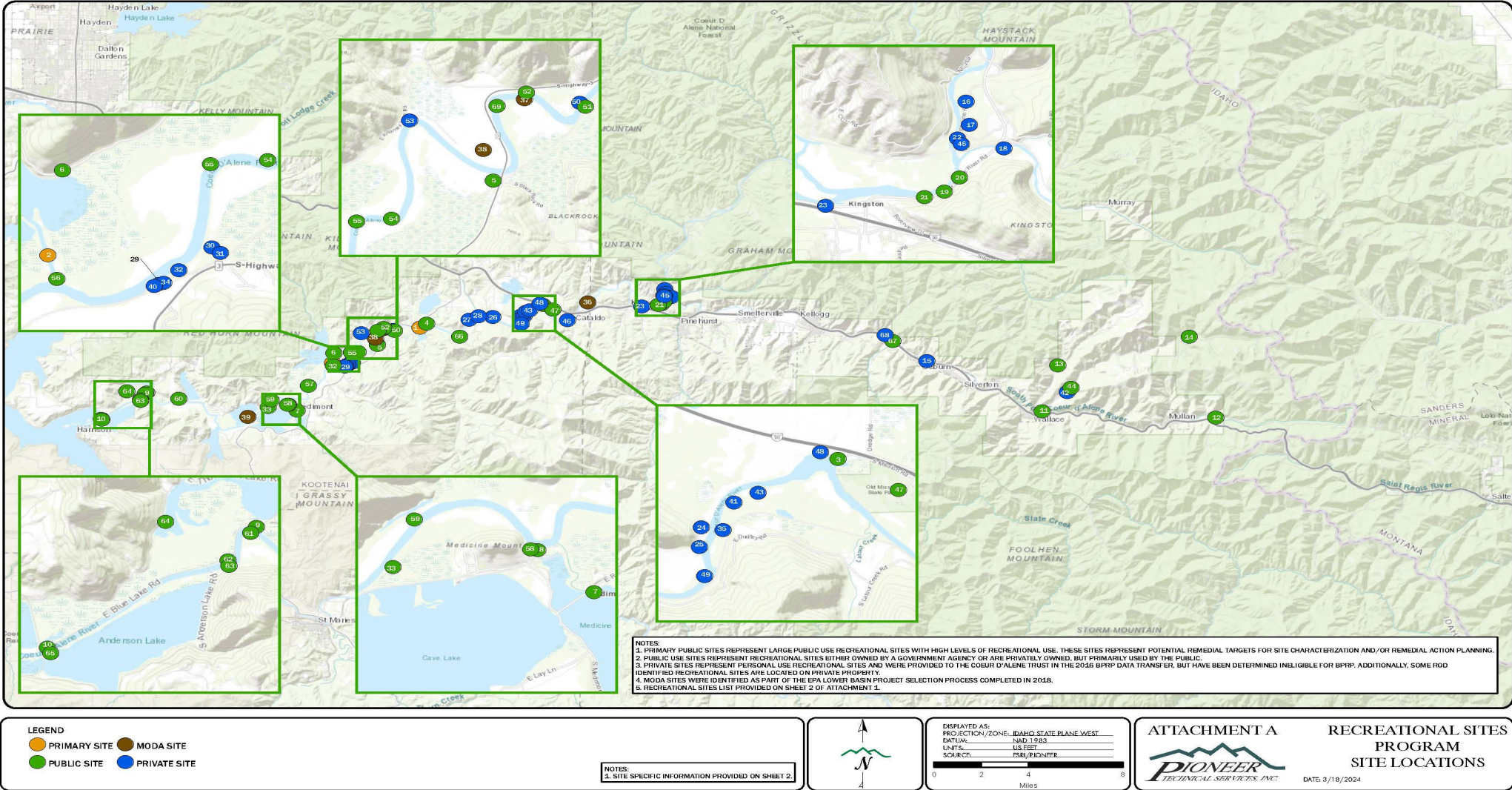


Challenges

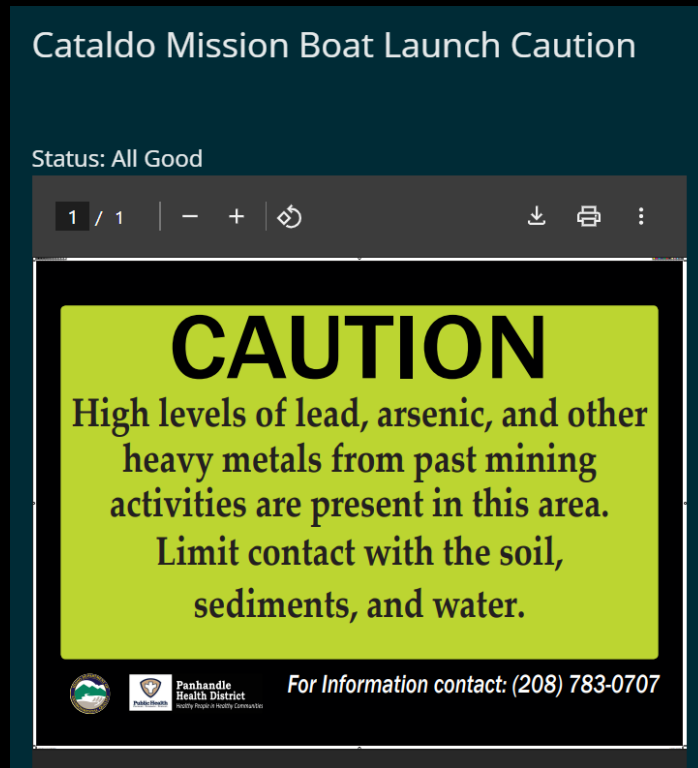
- Frequent flooding & recontamination
- Seasonal use
- Eligibility
- Remote locations



Basin Recreational Sites Overview



Signs: Warning & Education for recreators to reduce risk



- Interagency tracking of sign installation and condition
- ~70 signs throughout Box and Basin

Upcoming Work Examples

- Access controls near Rainy Hill boat launch
- Killarney Lake peninsula design
- Informational mailers to owners of waterfront property
- Sign maintenance
- IDEQ's Lake CDA Beach investigation report

Questions?



Thank you!