

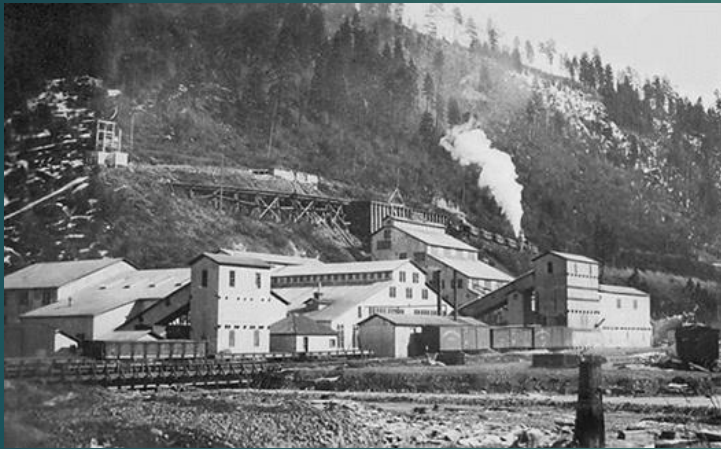


**COEUR D'ALENE BASIN  
RESTORATION PARTNERSHIP  
BEIPC UPDATE 11/29/23**



## RESTORATION PARTNERSHIP & TRUSTEE COUNCIL

- ▶ U.S. DEPT. OF THE INTERIOR
  - ▶ U.S. DEPT. OF AGRICULTURE
  - ▶ COEUR D'ALENE TRIBE
- STATE OF IDAHO

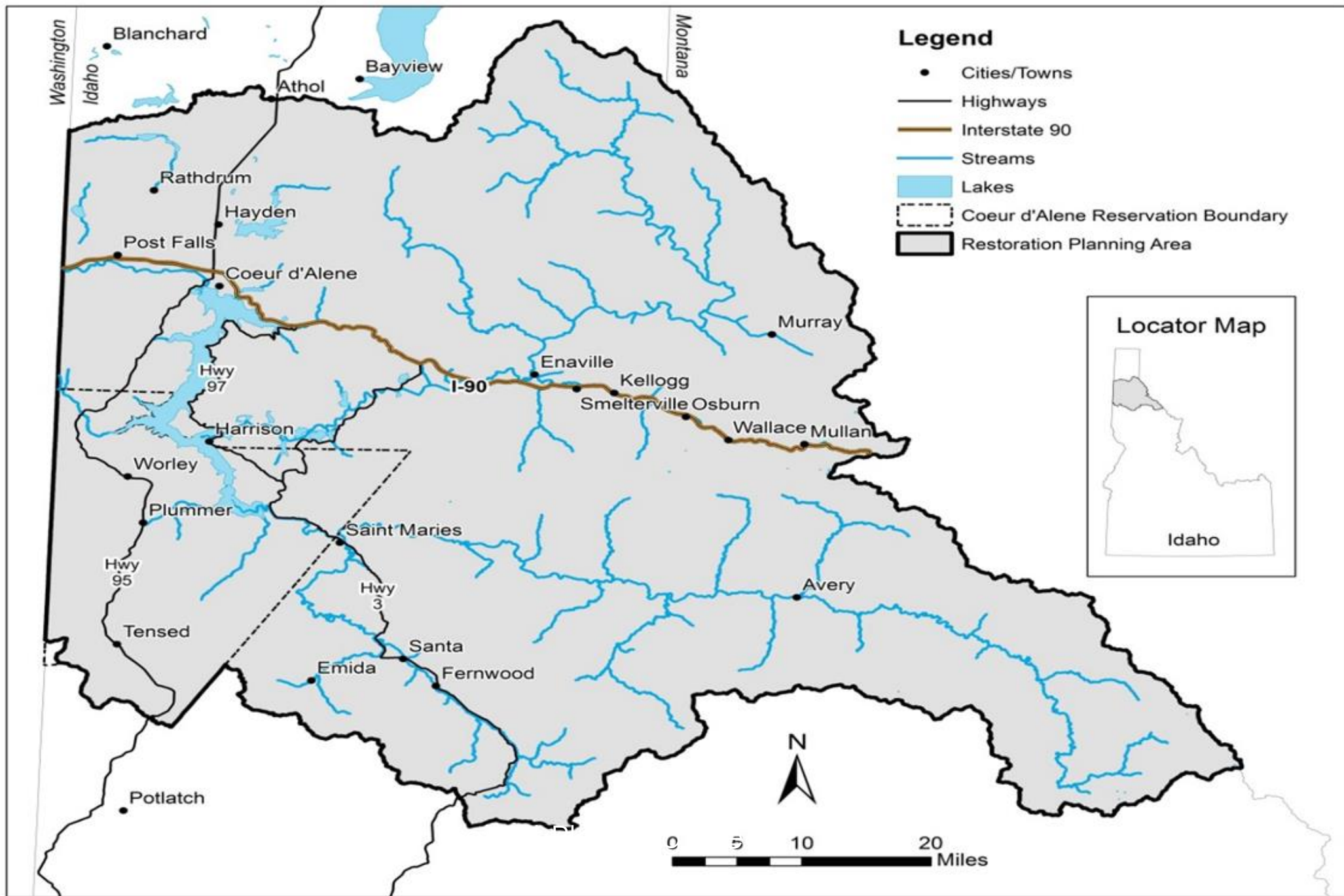


# WHAT IS RESTORATION?

- ▶ THE PROJECT RESTORES, REPLACES, AND/OR ACQUIRES THE EQUIVALENT OF NATURAL RESOURCES OR ASSOCIATED SERVICES THAT WERE INJURED BY THE RELEASE OF HAZARDOUS SUBSTANCES.







# FY23 ACCOMPLISHMENTS

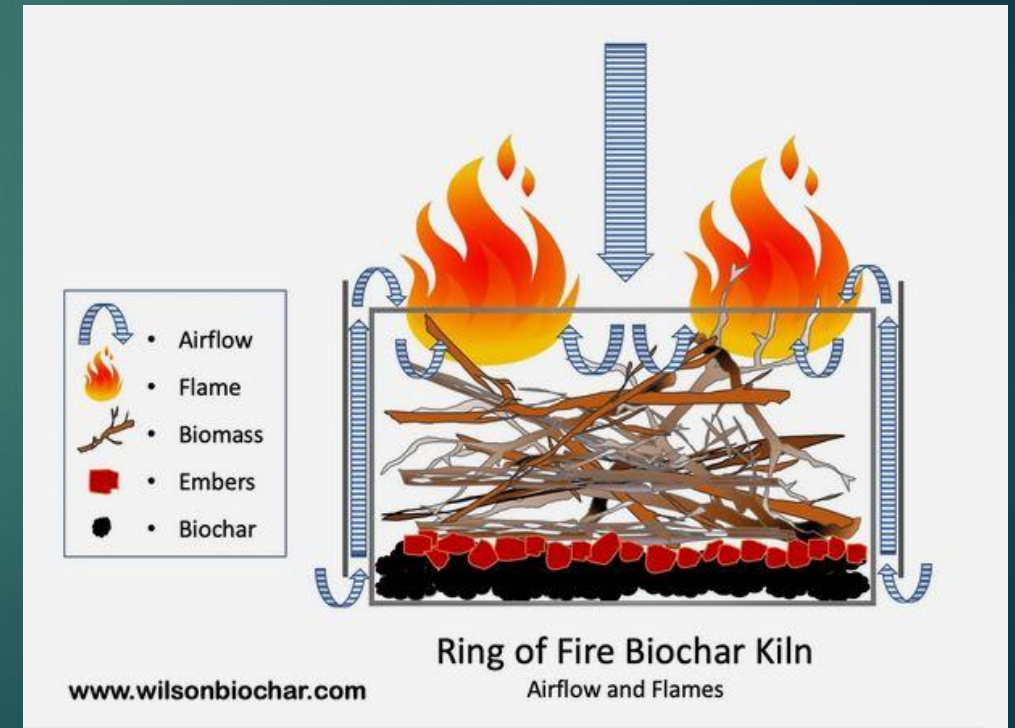
- ▶ COUGAR BAY STREAM & WETLAND RESTORATION: CULVERT REPLACEMENT AND ~ 800 NATIVE RIPARIAN PLANTINGS INSTALLED.
- ▶ TOTAL EXPENDITURES IN FY23: \$8,000





# U□ QHESU'LUMKHW (LAND IS GOOD AGAIN): CULTURAL SIGNIFICANT PLANT RESTORATION

- ▶ INSTALLED PLANT PROTECTORS, BEAVER SURVEYS, ENGAGED TRIBAL YOUTH, AND RING OF FIRE KILN FOR FUTURE BIOCHAR USE TO BOOST CAMAS SIZE AFTER HARVEST, RETAIN SOIL MOISTURE, AND PROMOTE MYCORRHIZAL COMMUNITIES
- ▶ TOTAL EXPENDITURES IN FY23: \$28,000



# *CHDELM KHWA CHATQ'ELE'ET* MONITORING AND MODELING COEUR D'ALENE LAKE'S RESPONSE TO RESTORATION

- ▶ LAKE AND LOWER CDA RIVER WQ SAMPLING (2 LAKE, 1 ST. JOE, 1 HARRISON) 13 EVENTS
- ▶ DATA ANALYSIS AND WRITING SYNTHESIS REPORTS
- ▶ WORKED WITH EPA STAFF TO UPLOAD DATA FROM THIS PROJECT THROUGH THE EPA SCRIBE PLATFORM FOLLOWING THE BUNKER HILL SUPER FUND SITE DATA MANAGEMENT PLAN.
- ▶ TOTAL EXPENDITURES IN FY23: \$49,000





# *GUE HINCH'MCHINMSH - NATIVE WILLOW NURSERY FOR SUPPORT OF RESTORATION ACTIONS*

- ▶ MONITORED GROWTH AND HARVEST OF 7 NATIVE WILLOW SPECIES FOR POLE AND WHIP AVAILABILITY FOR RP PROJECTS
- ▶ FINALIZED A SOP TO IDENTIFY SUITABLE WILLOW CONDITIONS
- ▶ TOTAL EXPENDITURES IN FY23: \$1,470





# HEPTON LAKE WETLAND RESTORATION PROJECT

- ▶ RFP WITH CONSTRUCTION CONTRACTOR FOR WINTERTIME LEVEE BREACH PLUG REPAIR DURING LOW WATER
- ▶ SUPPLIES AND MATERIALS NEEDED FOR CONSTRUCTION STAGED (I.E., TIMBER MATS, FILTER FABRIC, CULVERTS, FLAP GATES AND SCREENS FOR CULVERTS, AND THE MANUAL BUTTERFLY VALVE, FLANGES AND BOLTS)
- ▶ LESSONS LEARNED: INFILTRATION OF GW & SW OCCURS FROM MULTIPLE LOCATIONS.
- ▶ TOTAL EXPENDITURES IN FY23: \$146,000



# LAKE CREEK WATERSHED RESTORATION

- ▶ COMPLETED FINAL DESIGN FOR CHANNEL RESTORATION ON MULTIPLE PROPERTIES IN UPPER LAKE CREEK TO CREATE CHANNEL GRADE AND PROFILES WITHIN THE RANGE OF HISTORICAL CONDITIONS WHEN BEAVER WAS A PREDOMINANT FACTOR IN SHAPING THE VALLEY BOTTOM LANDSCAPE
- ▶ ALL PERMITS SECURED INCLUDING A CR INVENTORY
- ▶ PLANTINGS AND LWD INSTALLATIONS
- ▶ TOTAL EXPENDITURES IN FY23: \$58,000





# PRICHARD CREEK PLANNING AND PHASE 1 IMPLEMENTATION

- ▶ MULTIPLE PARTNERS WITH IDAHO FOREST GROUP AS THE LANDOWNER OF THE C.E.
- ▶ DESIGN UNDERWAY IN MULTIPLE PHASES WITH LWD STRUCTURES BUILT AND INSTALLED
- ▶ RIPARIAN PLANTINGS & WILLOWS FROM TRIBAL WILLOW FARM
- ▶ TOTAL EXPENDITURES IN FY23: \$460,000



# GENE DAY POND

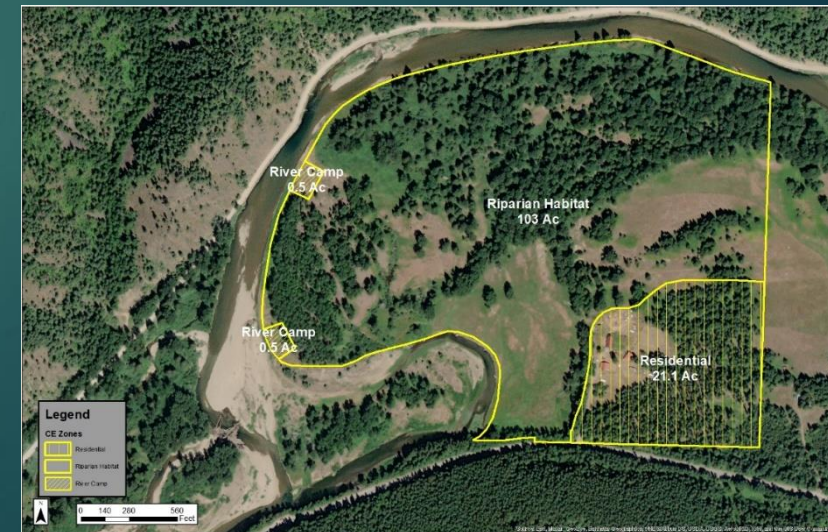
- ▶ MULTIPLE PARTNERS
- ▶ PARKING AREA GRAVELED, TRAFFIC CONTROL BOULDERS, AND INFO KIOSK
- ▶ CONCRETE PAD FOR RR FACILITY SOON
- ▶ TOTAL EXPENDITURES IN FY23: \$7,500





# NFK CDA RIVER C.E.

- ▶ IDFG CONTINUES TO HAVE CONVERSATIONS WITH THE LANDOWNER ABOUT PRESERVING THE COLD WATER REFUGIA ALONG THE RIVER.
- ▶ PERMANENT PROTECTION OF THE NATURAL FLOODPLAIN COMMUNITIES AND COLD WATER HYPOREIC FLOW
- ▶ TOTAL EXPENDITURES IN FY23: \$0



# GRAY'S MEADOW WETLAND CONVERSION/RESTORATION

- ▶ CONTINUE TO WORK WITH EPA AND THE WORK TRUST ON REMEDIAL ACTIVITIES/ CONSTRUCTION TO PREPARE FOR RESTORATION
- ▶ BASELINE ECOLOGICAL MONITORING/EVALUATIONS
- ▶ WATER CONTROL STRUCTURES, DIKE REINFORCEMENTS, BIRD NESTING HABITAT/ISLAND BUILDING, DUST CONTROL, ETC.
- ▶ TOTAL EXPENDITURES IN FY23: \$384,735





# RED IVES CREEK RESTORATION

- ▶ LWD HARVESTED AND INSTALLED POST DAM REMOVAL TO ENHANCE FLOODPLAIN CONNECTIVITY
- ▶ MULTIPLE PARTNERS AND FUNDING SOURCES THROUGH COST SHARE WHICH SUPPORTS THE LONGEVITY OF THIS BULL TROUT SUPPORTING STREAM
- ▶ MONITORING EFFECTIVENESS AND SUCCESS
- ▶ TOTAL EXPENDITURES IN FY23: \$180,310



# CANYON MARSH AG TO WETLAND

- ▶ WORKING WITH DU AND EPA ON COLLABORATIVE REMEDIAL PLANS FOR THE FUTURE THROUGH REMEDIAL INVESTIGATIONS
- ▶ CONCEPTUAL WETLAND RESTORATION UNDERWAY
- ▶ WORKING WITH EAST SIDE HWY DISTRICT ON CULVERT REPLACEMENT APPLICATION FOR BIL FUNDING AND FISH PASSAGE
- ▶ TOTAL EXPENDITURES IN FY23: \$18,300





# GLEASON'S MARSH AG TO WETLAND

- ▶ MONITORING FOR BASELINE DATA (E.G., TOPOGRAPHIC, HYDROLOGICS, SOILS, ETC.) FOR C.E. AND FUTURE REMEDIAL AND RESTORATION PLANS
- ▶ TOTAL EXPENDITURES IN  
FY23: \$9,000



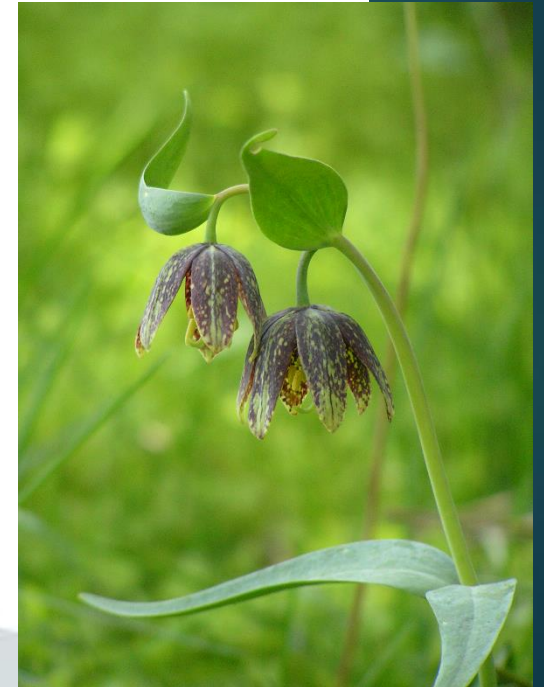




# QUESTIONS?







**Projects that  
leverage other  
plans and programs**

**1**

**Critical habitat for bull trout**

**2**

**Stream connectivity**

**3**

**Lake water quality improvement**

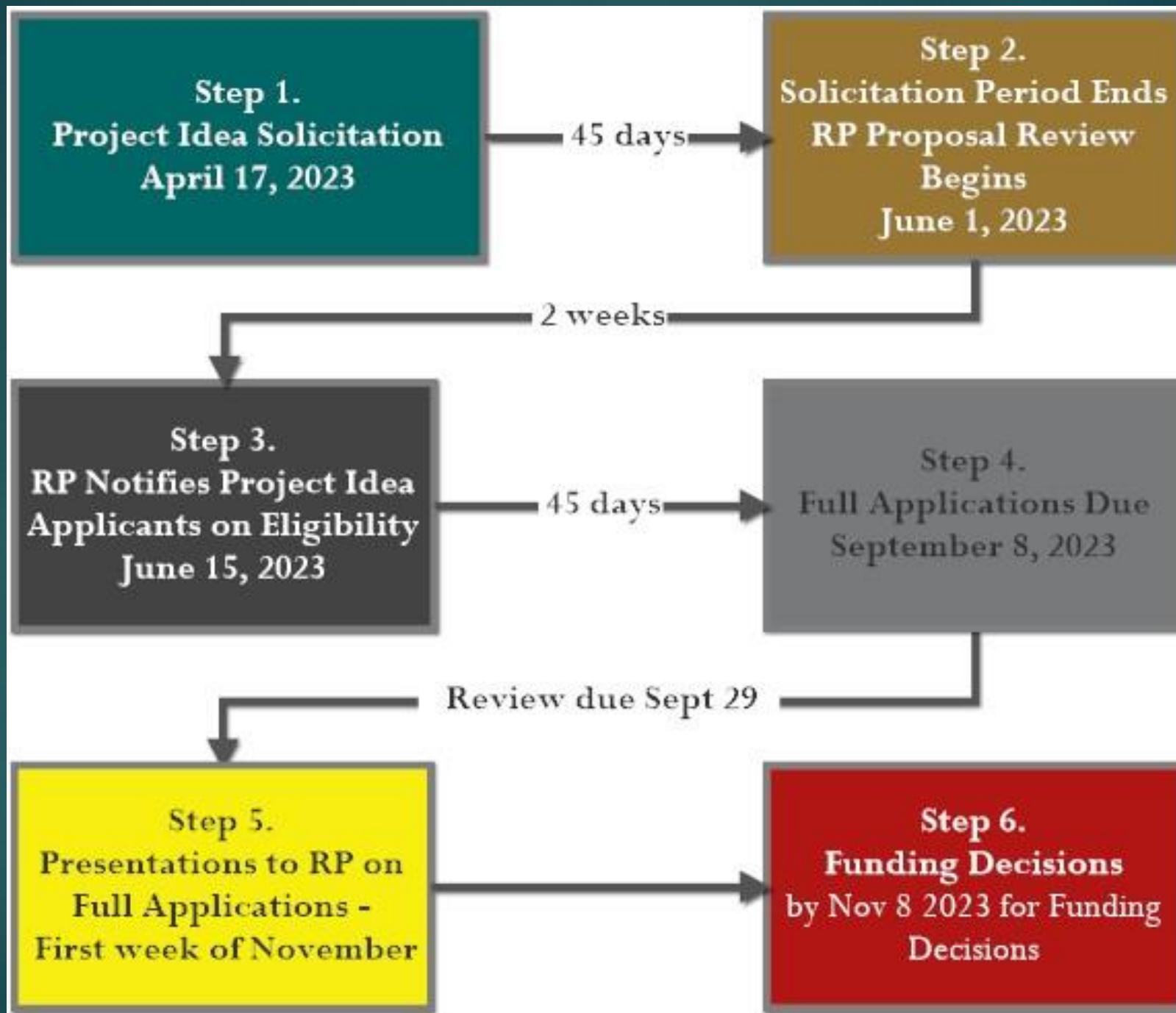
**4**

**Wetland enhancement**

**5**

**Complements other Natural  
Resource Restoration projects**





# PROJECT IDEAS RECEIVED

- ▶ 16 IDEAS SUBMITTED
- ▶ 3 DID NOT MEET THE ELIGIBILITY CRITERIA
- ▶ 2 WITHDREW





# PROCESS

- ▶ TRUSTEES RANKED THE IDEAS THROUGH THE ELIGIBILITY CRITERIA
- ▶ PROJECT PROPONENTS WERE ASKED TO SUBMIT FULL APPLICATIONS
- ▶ TECH STAFF RANKED APPLICATIONS THROUGH FULL CRITERIA MATRIX



# WHAT ARE ELIGIBILITY CRITERIA?

- ▶ THE PROJECT OCCURS WITHIN THE PLANNING AREA.
- ▶ NO ADDITIONAL INJURY TO NATURAL RESOURCES OR SERVICES
- ▶ THE PROJECT AVOIDS OR MITIGATES HUMAN HEALTH RISKS
- ▶ THE PROJECT IS CONSISTENT WITH APPLICABLE LAWS



# ELIGIBILITY CRITERIA CON'T

- ▶ NO INFRASTRUCTURE PROJECTS
- ▶ SERVICES: HUMAN USE, CULTURALLY SIGNIFICANT, COMMUNITY SUPPORT, ETC.
- ▶ WILL NOT REPLICATE CLEANUP AND NOT CAUSE NEGATIVE EFFECTS TO CLEANUP ALREADY COMPLETED OR UNDERWAY.
- ▶ WILL NOT REPLACE OTHER OBLIGATED FUNDS.



# 11 PROJECTS SELECTED FOR FUNDING

- ▶ RESTORE FISH PASSAGE AND ECOSYSTEM FUNCTION IN MIESEN CREEK
- ▶ BENEWAH CREEK *'ELTUMISH* PROJECT - STREAM/WETLAND RESTORATION
- ▶ LAKE CREEK C.E.
- ▶ LANE MARSH ACQUISITION OR C.E.
- ▶ BIG CREEK FISH PASSAGE BARRIER REMOVAL
- ▶ UPPER ST. JOE RIVER BULL TROUT HABITAT



# CONT

- ▶ LITTLE NORTH FORK WATERSHED ENHANCEMENT
- ▶ BEAVER CREEK PHASED WATERSHED ENHANCEMENT
- ▶ ASSESSING FISH PASSAGE AT STREAM CROSSINGS IN THE CDA BASIN
- ▶ CDA LAKE MONITORING AND MODELING
- ▶ THE PALEOLIMNOLOGY OF COEUR D'ALENE LAKE FROM PRE-DISTURBANCE TO MINING IMPACTS AND PRESENT DAY





# QUESTIONS?

