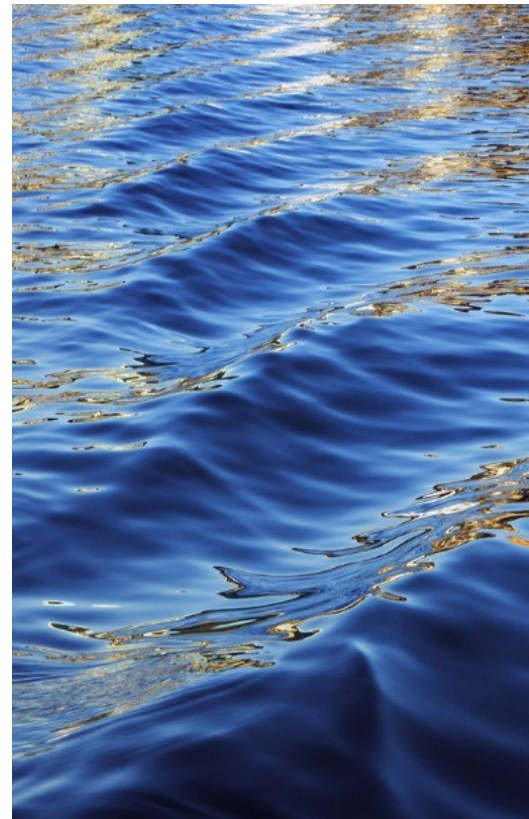
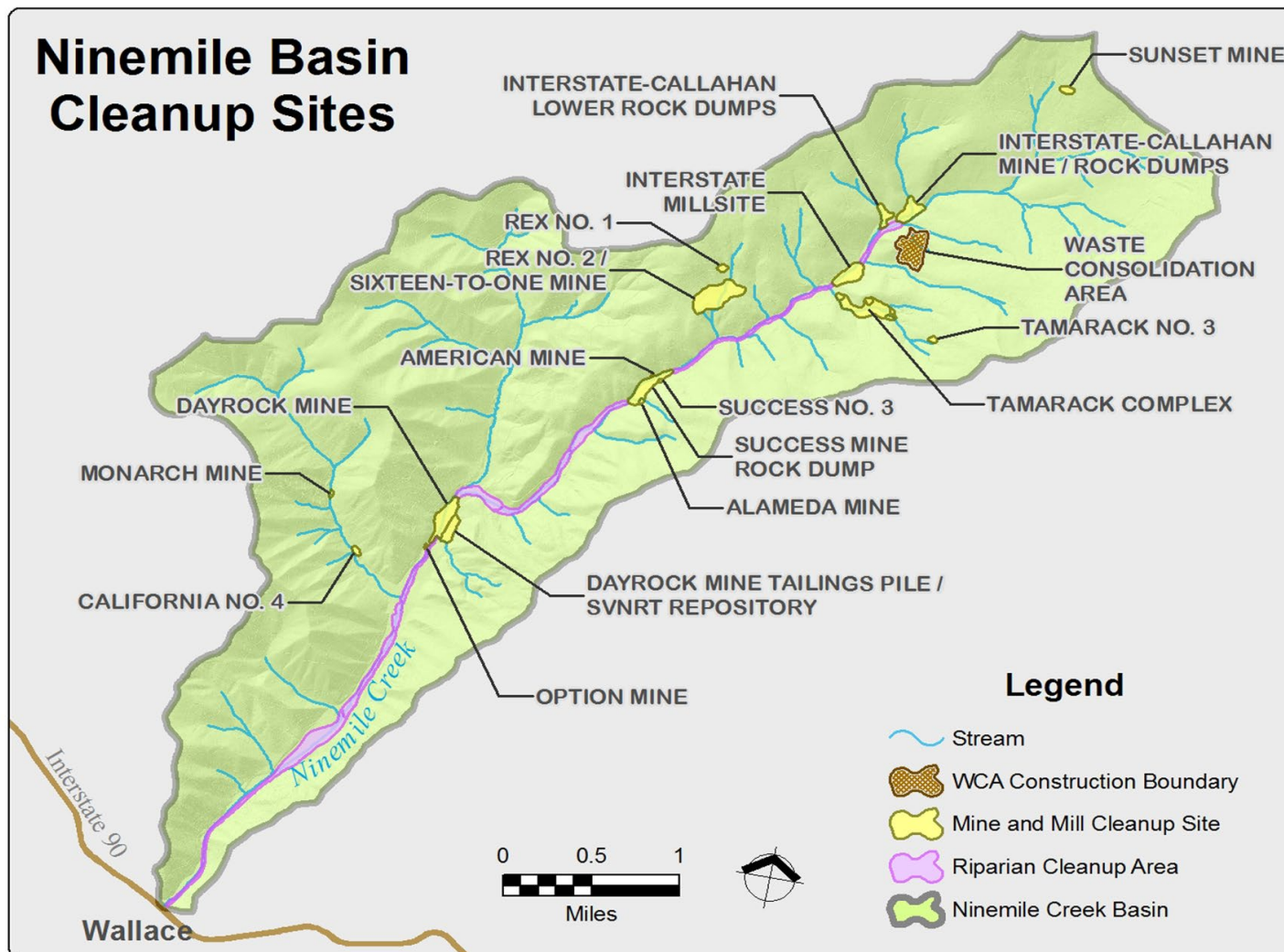


The Bunker Hill Superfund Site: 2022 Focus Areas

Wednesday, May 18, 2022







EAST FORK NINEMILE WCA



TAMARACK COMPLEX

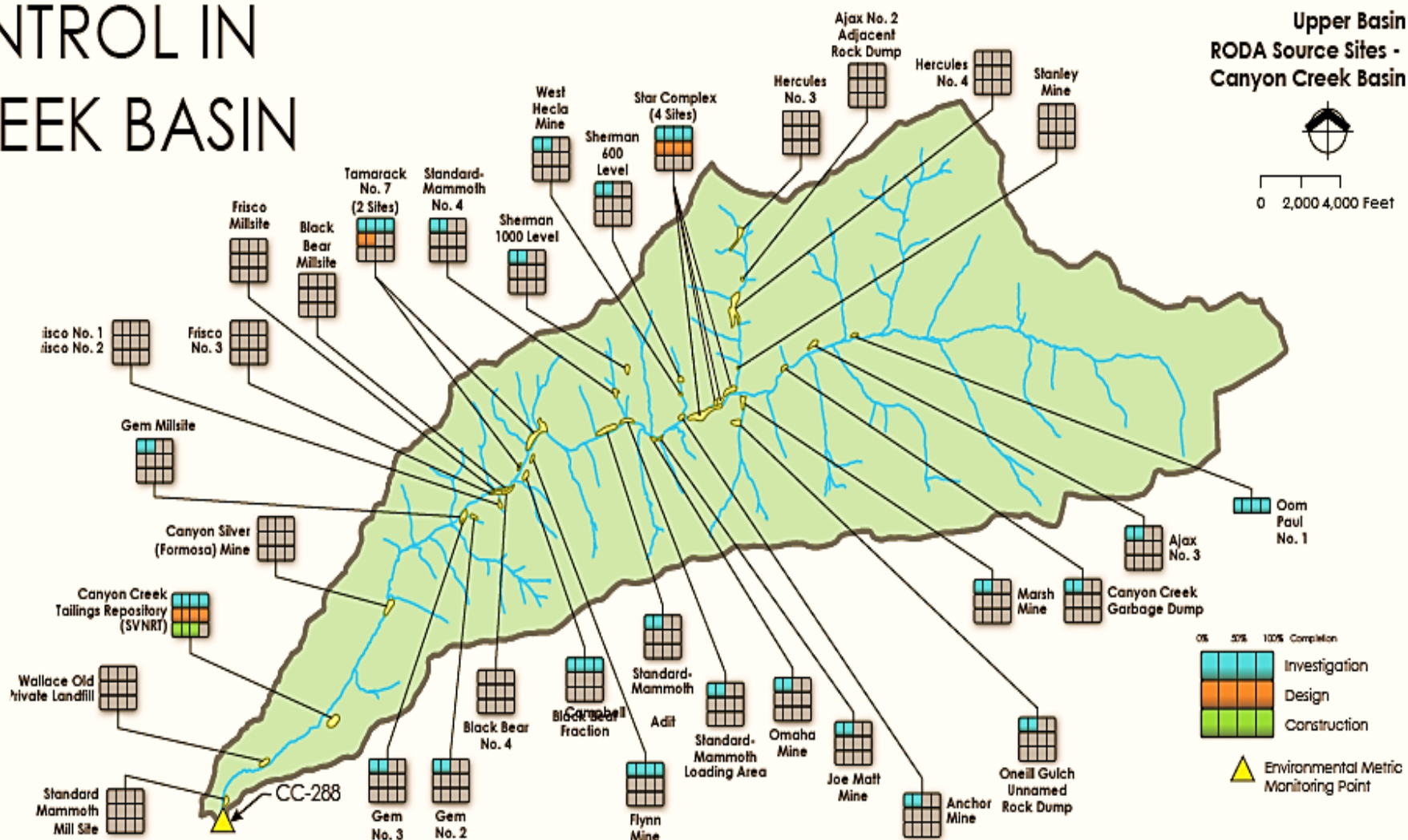


DAYROCK COMPLEX



CANYON CREEK BASIN

CONTROL IN CANYON BASIN



CANYON COMPLEX REPOSITORY

WASTE CONSOLIDATION AREA





FRISCO/BLACKBEAR COMPLEX

GEM MINE

Play Safe. Protect Your Health.

Warning signs and this area around them can have high concentrations of lead, arsenic, and other heavy metals in the soil. We advise you to take precautions and keep children and pets away from this area.

- Do not eat or drink from this area.
- Do not play in this area.
- Do not walk or run in this area.
- Do not dig or dig up soil in this area.
- Do not use this area for anything other than walking.
- Do not use this area for anything other than walking.
- Do not use this area for anything other than walking.
- Do not use this area for anything other than walking.

Please respect private property.

Blackfoot National Forest
12081 783-0707
or visit www.fs.fed.gov/blackfoot

STANDARD MAMMOTH



BPRP SUBSTANTIALLY COMPLETE

2022 ACTIVITIES

- Continue maintaining drinking water filtration systems at 6 homes

-POSSIBLE CLEANUPS AT PROPERTIES WHERE THERE ARE REMAINING ACCESS ISSUES

- Not all residents have given access yet for sampling and cleanup

- Sale of unsampled & un-remediated properties could lead to possible cleanups



DISPOSAL FACILITIES

UPPER BASIN

- Lower Burke Canyon
- Big Creek & Big Creek Annex

BOX

- Page Repository

LOWER BASIN

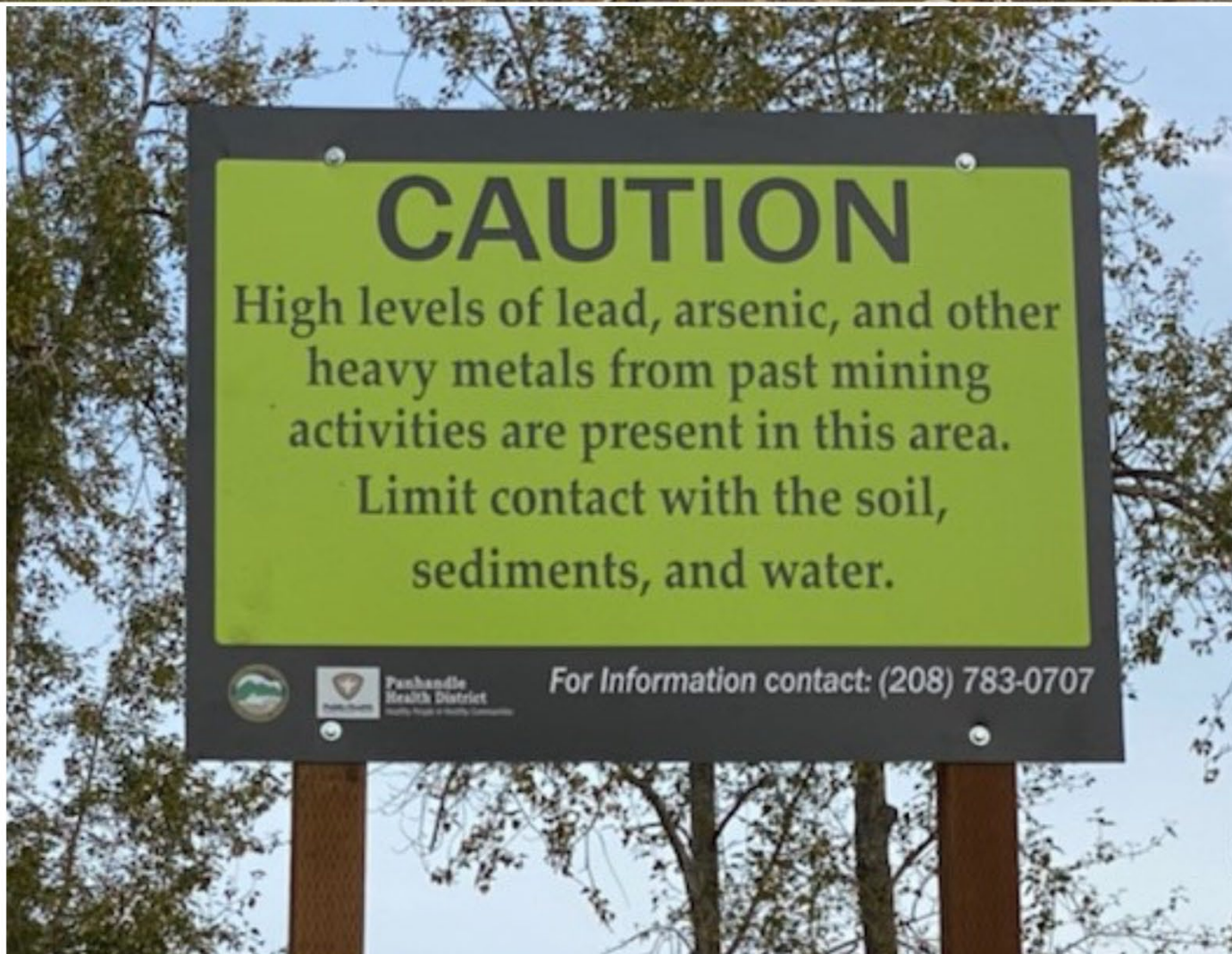
- East Mission Flats



RECREATIONAL SITES

EDUCATION





Play Safe. Protect Your Health.

Keep Clean



Wash your hands and face with clean water or wipes before eating or drinking.



Wash toys, bottles, and pacifiers if they come in contact with soil, sand, or dust.



Remove dirt from clothes, toys, pets, cars, boats, and camping equipment before you leave. Wash all items when you return home.



Eat Clean



Drink, cook, and wash with bottled water or water from home. Do not use river water.



Eat at a table or on a clean blanket, not bare ground.



Follow fish consumption advisories, especially for pregnant women and children. Find current advisories at: fishadvisory.dhw.idaho.gov

Play Clean



Play in grassy areas and avoid loose soil, sand, dust, and muddy areas.



The soils and sediments in this area contain harmful levels of lead, arsenic, and other heavy metals.

Young children and pregnant women are at greatest risk from exposure. It is easy to reduce exposure and enjoy your time recreating in the Coeur d'Alene Basin by following the safety tips above.

Be aware.

Some species of fish in this area are at risk of contaminants, such as mercury, that can be dangerous to the developing child. Children under the age of 15 and women of childbearing age (especially if pregnant, planning to become pregnant, or nursing) should limit consumption of these types of fish.

Largemouth Bass Smallmouth Bass Bluegill Black Crappie White Crappie Yellow Perch Pumpkinseed Suckers



Kokanee Salmon Bullhead Catfish Cutthroat Trout Rainbow Trout Brook Trout Tench Channel Catfish



Play Safe. Protect Your Health.

The soils and sediments in this area contain harmful levels of lead, arsenic, and other heavy metals.

Young children and pregnant women are at greatest risk from exposure. It is easy to reduce exposure and enjoy your time recreating in the Coeur d'Alene Basin by following the safety tips below.



Wash your hands and face with clean water or wipes before eating or drinking.



Wash toys, bottles, and pacifiers if they come in contact with soil, sand, or dust.



Remove dirt from clothes, toys, pets, cars, boats, and camping equipment before you leave. Wash all items when you return home.



Eat Clean

Drink, cook, and wash with bottled water or water from home. Do not use river water.



Eat at a table or on a clean blanket, not bare ground.



Follow fish consumption advisories, especially for pregnant women and children. Find current advisories at: fishadvisory.dhw.idaho.gov



Play Clean

Play in grassy areas and avoid loose soil, sand, dust, and muddy areas.

You are here.



Be aware.



The picture above shows a boat ramp covered with sediment. Sediment deposits such as these are contaminated with lead, arsenic, and other heavy metals. Please contact Panhandle Health District if you see a boat launch or parking area covered with lots of loose sediment (like this photo). Make sure you clean your boats and vehicles before leaving the area so you do not bring contaminants home.



Panhandle Health District
Healthy People in Healthy Communities

Contact Panhandle Health District at:
(208) 783-0707
or visit: deq.idaho.gov/playclean



Panhandle Health District
Healthy People in Healthy Communities

Contact Panhandle Health District at:
(208) 783-0707
or visit: deq.idaho.gov/playclean

COEUR D'ALENE WORK TRUST

2009 ASARCO BANKRUPTCY SETTLEMENT

- \$437m initially deposited into Trust Account (May 6: \$584m)
- Spent \$186.5m Spent since Inception
- Annual workplan of \$25-30m (upper and lower basin)

USES OF CDA WORK TRUST FUNDS

- Can only be used to fund Record of Decision-selected Basin cleanup actions
- Cannot be used to fund Box cleanup actions.
- Cannot be used to fund oversight of the CdA Trust
- Cannot be used to fund State, Tribe, local governments or
- other Federal agencies work in the Box or Basin.