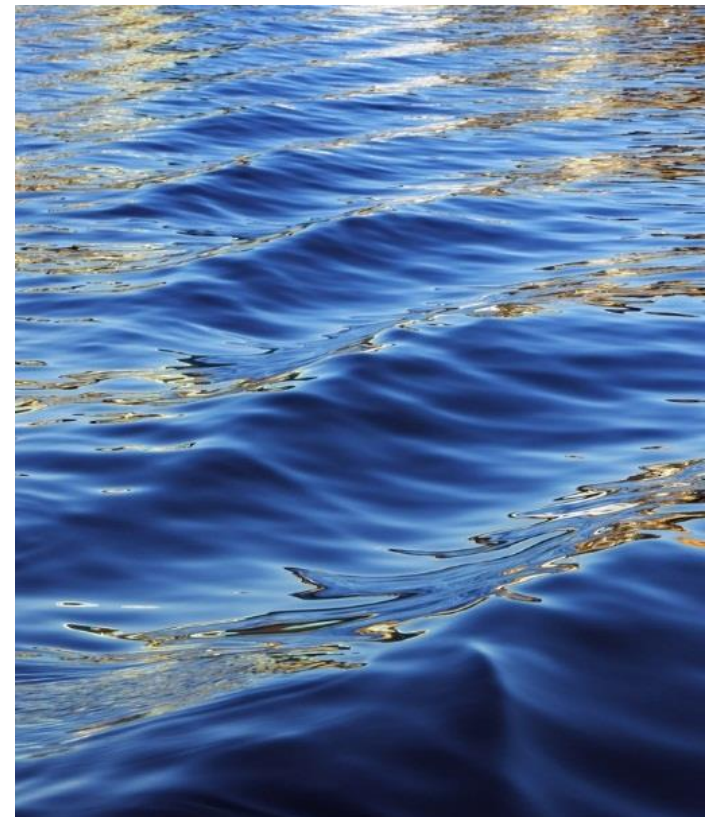




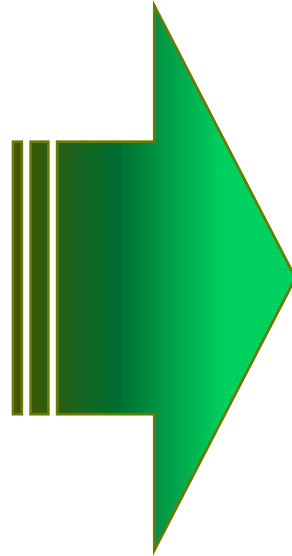
Lower Basin WCA: *Virtual Public Information Session*



Recording in Progress

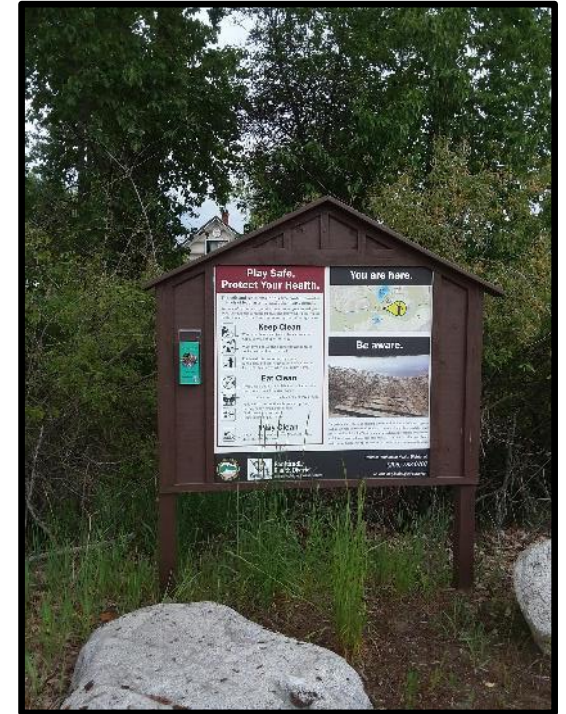
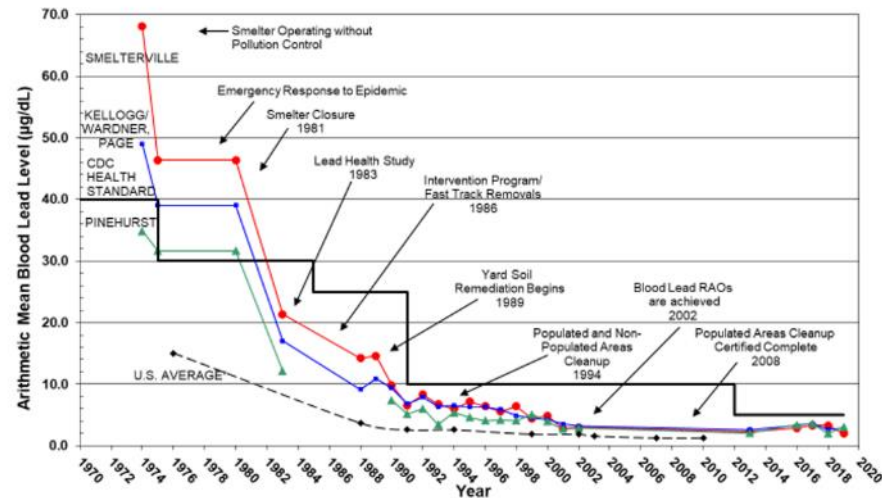


Cleaning up the Silver Valley



Helping people become healthier

BUNKER HILL BOX AVERAGE BLOOD LEAD: 1974-2019*



Collecting and Storing the Waste

- Regional Repositories



Lower Burke Canyon Repository



Page Repository

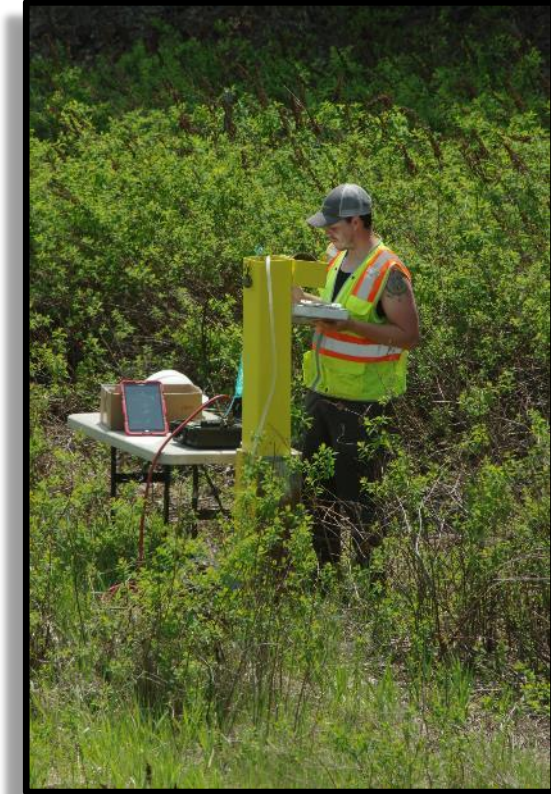


Big Creek Repository & Annex



East Mission Flats Repository

Protection and Monitoring of the facilities



Waste Consolidation Areas

- Like Regional Repositories, but just a bit different...



East Fork Ninemile WCA
Recording in Progress



Canyon Complex WCA

Closing a waste storage facility



Big Creek Repository



East Fork Ninemile WCA

Citizens Criteria helped guide our WCA siting process

- Impacts to wetlands
- Impacts to surface water, fish, and wildlife
- Impacts on floodplain
- Proximity to faults and landslide areas
- Impacts to people living or working nearby (residences and schools along truck haul routes)
- Impacts to all residents, including children, along truck haul routes
- Trucking costs
- Potential for economic redevelopment once repository construction is complete
- Storage capacity



Draft Technical Criteria for WCA Siting



- Minimize potential for impact to wetlands and related wildlife
- Minimize potential for impact to surface waters and fish and wildlife
- Minimize potential for impact to groundwater
- Minimize potential for impact to base flood elevation
- Site is not near a mapped fault or likely to be affected by a landslide
- Site not likely to result in impacts to persons living or working near the repository (residences, schools, urban areas)
- Truck route along State Highway 3 to the WCAs not likely to affect existing persons or businesses
- Minimize trucking costs by locating WCAs close to cleanup areas
- Development of WCAs generates clean soil or rock for remedial action construction and caps
- Capacity of WCAs is sufficient for the planned remedial actions in the vicinity of the WCAs



Reaching out to the Public

- Direct mailing of Fact Sheet/Informational Sheets
- Presentations at Basin Commission meetings
- Newspaper articles and public notices
- Virtual and in-person public sessions
- Construction season flyers
- Basin Bulletins
- Respond directly to questions



**Questions and answers about sampling at Lower Basin properties**
Coeur d'Alene Basin CleanupJune 2021

This summer, the Coeur d'Alene Trust, under EPA's direction, will begin soil sampling at properties in the Lower Coeur d'Alene River Basin. Sampling will help us evaluate how suitable the properties are for various future uses. We're providing this fact sheet to give you the latest information and answer your questions.

Where are the properties located? The Dredge Road property is two miles west of Cataldo, on the north side of Interstate 90. In addition to the Dredge Road property, the Trust also owns an adjacent small property south of I-90 that borders the Coeur d'Alene River.

Work schedule: Sampling will take place this summer and last about 7-10 days. Additional data collection will take place this fall as needed to support the investigation. You may see trucks, drill rigs, and other equipment on the properties at this time. The Trust will be surveying and sampling the properties.

Things to know about the properties: The properties were deeded to the Trust through the ASARCO bankruptcy. From 1932-1968, a suction dredge operated in the Coeur d'Alene River near the boat launch. Over its life, the dredge removed about 34.5 million tons of sediments contaminated with mine tailings from the Coeur d'Alene River. These contaminated sediments were deposited in a tailings pond on Mission Flats, covering an area of about 2,000 acres to a depth of 25-30 feet. The properties are within this area, which contains high levels of lead and other metals.


What will the properties be used for? No decisions have been made yet for how the properties will be used. The Trust is often looking for properties from which to obtain soil, gravel, and larger rock, or as locations to place contaminated materials in protectively engineered waste repositories (Waste Consolidation Areas). The properties could also provide an area to keep equipment needed for future work. Properties such as these are essential to completing our cleanup projects. We need to conduct investigations to determine their suitability.

What's important to know about Lower Basin cleanups? Lead and other heavy metals are common in the soils and sediments of the Coeur d'Alene River and floodplain. These contaminants pose a risk to people's health and the environment. The Trust and EPA are moving forward carefully to investigate the proper path to implement Lower Basin cleanups. Lower Basin cleanup has been a relatively new endeavor for both EPA and the Trust in the past several years. The topography, river system, and methods of completing efficient and viable cleanups is different from the Upper Basin, where cleanup has been going on for years. Much information is needed before we select a cleanup technology, or technologies, and draft cleanup designs.

For more information:

Patrick Hickey, Project Manager, EPA hickey.patrick@epa.gov 206-553-6295 • 800-424-4372 ext. 6295.	Debra Sherbina, Community Involvement Coordinator, EPA sherbina.debra@epa.gov 206-553-0247 • 800-424-4372, ext. 0247.
--	---

If you need materials in an alternative format, please contact Debra Sherbina at 800-424-4372, ext. 0247.
TDD or TTY users, please call 800-877-8339 and give the operator Debra's phone number.



Equipment like this sonic drill rig will be used for soil sampling.



Exciting New Chapter

Lower Basin Cleanup

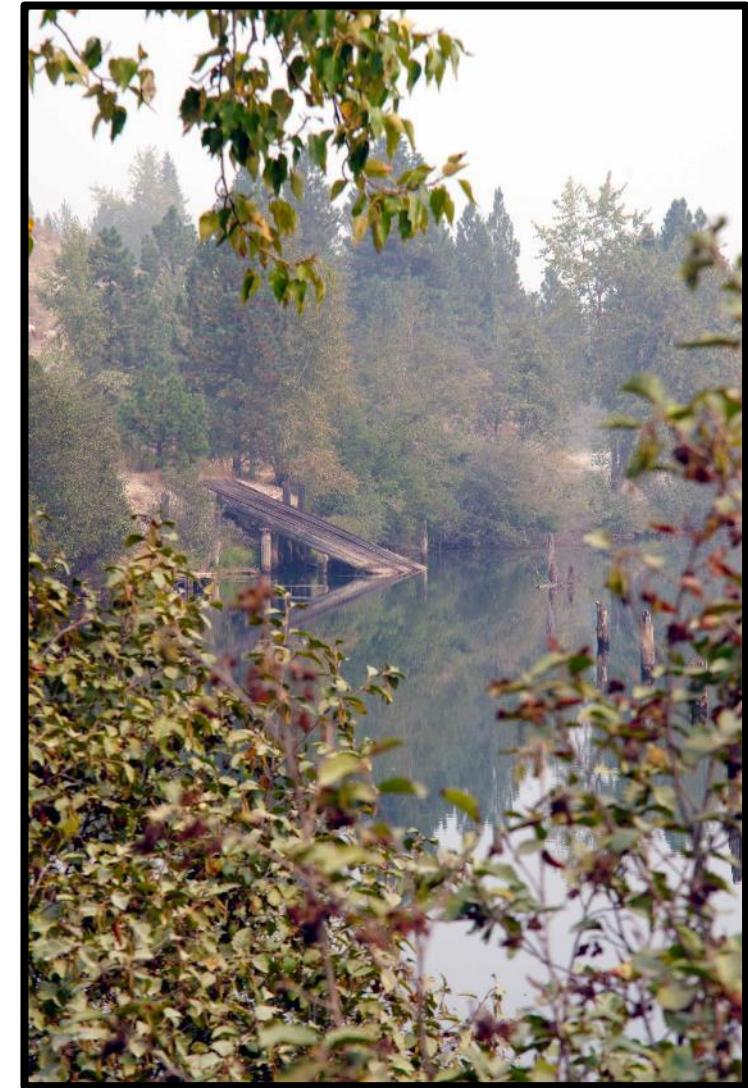
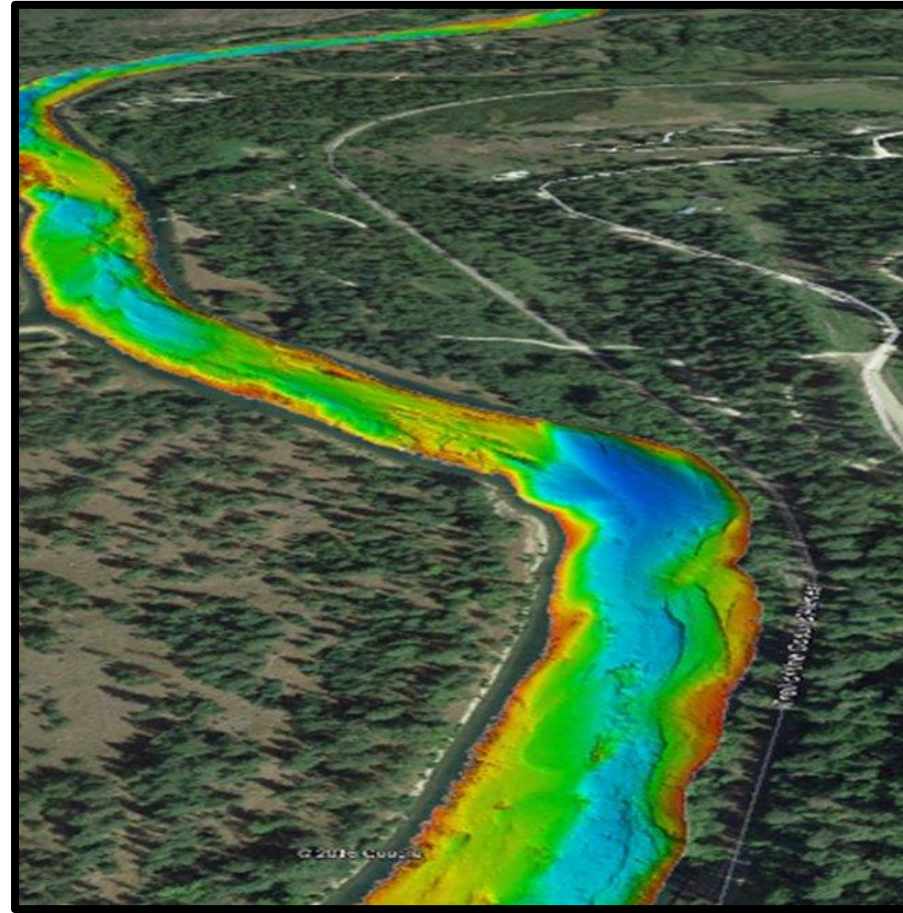


Recording in Progress

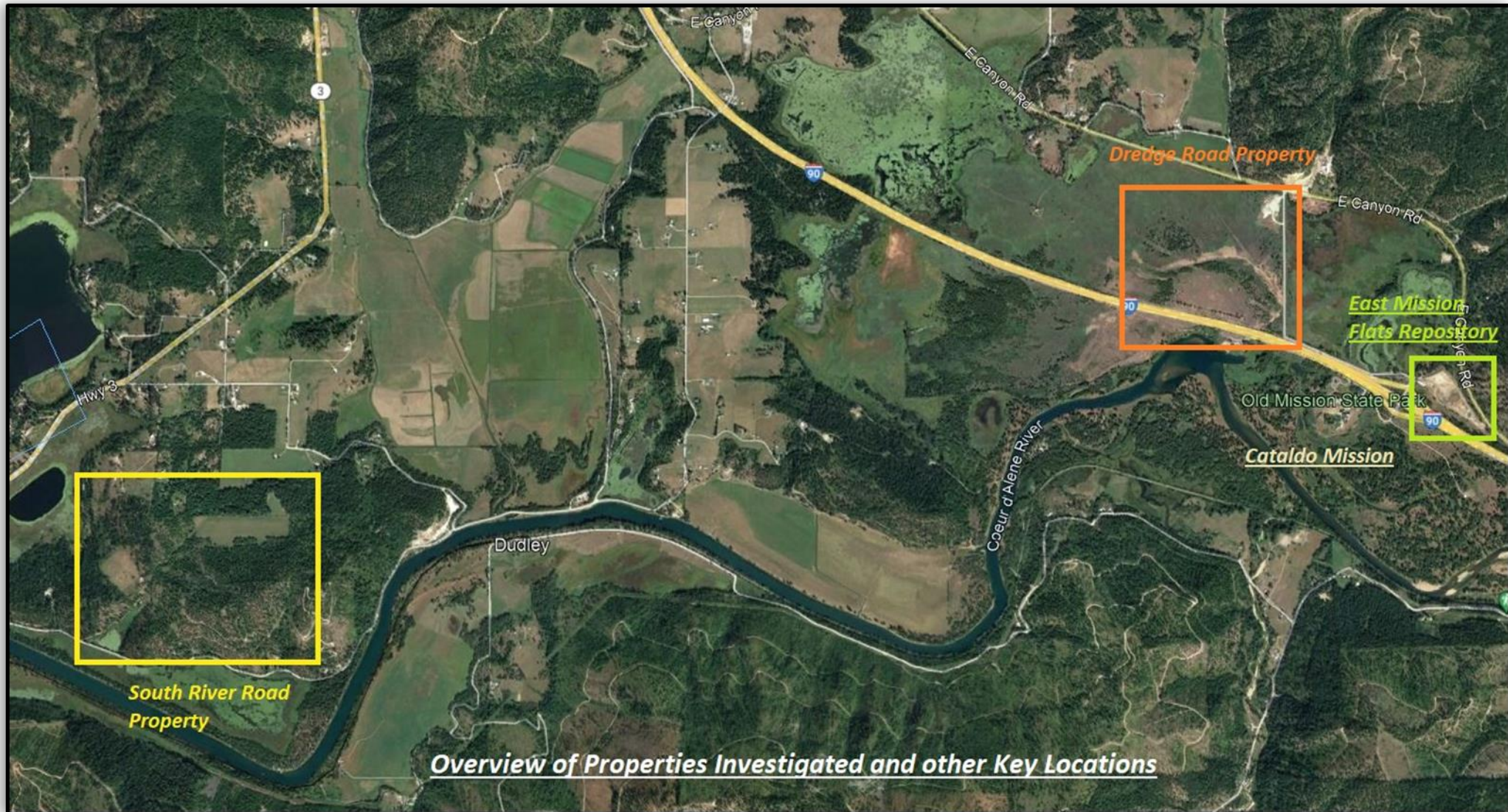


Why the Lower Basin?

- Lower Basin Cleanup
 - River
 - Wetlands



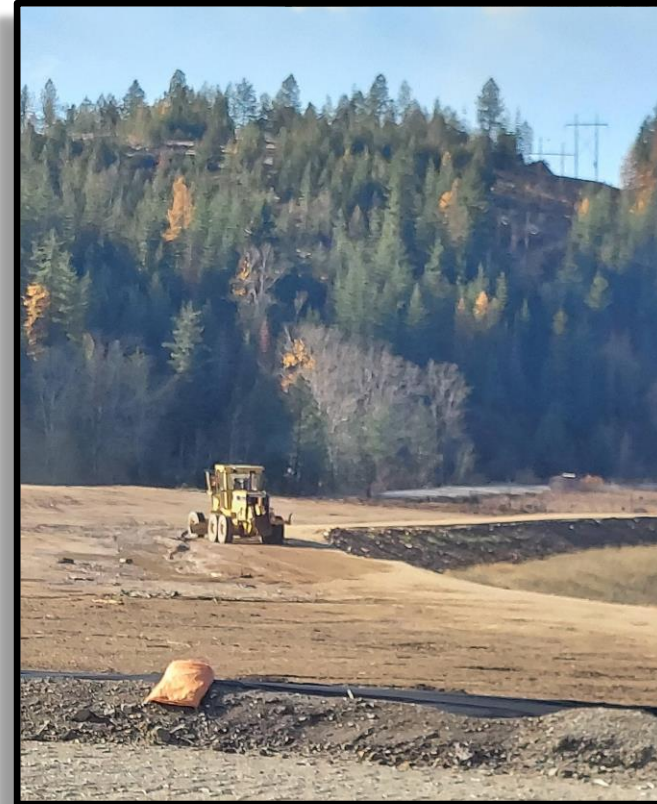
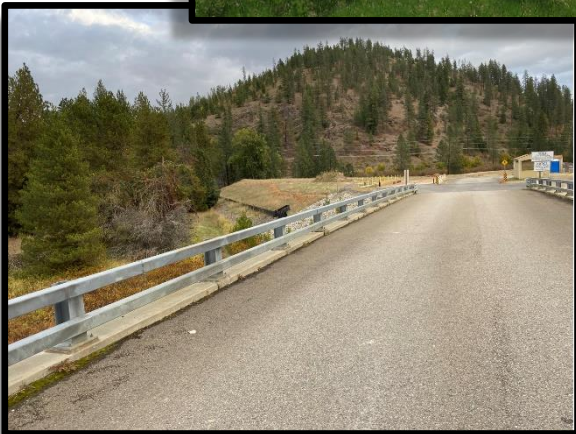
Lower Basin WCA



How big will the new WCA be?



East Mission Flats Repository



Page Repository

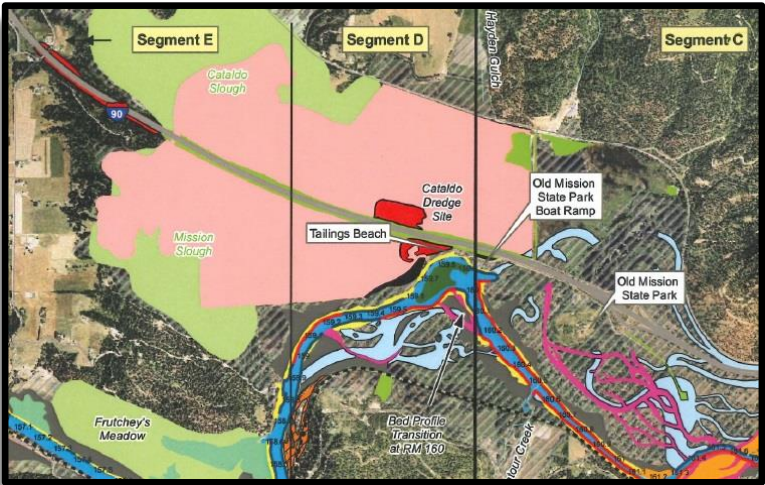
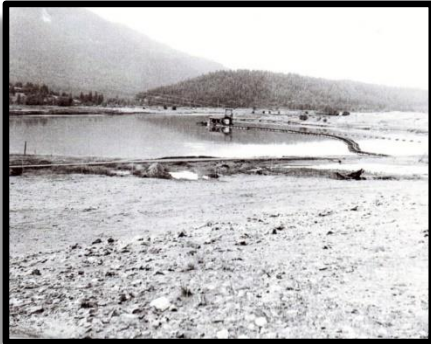
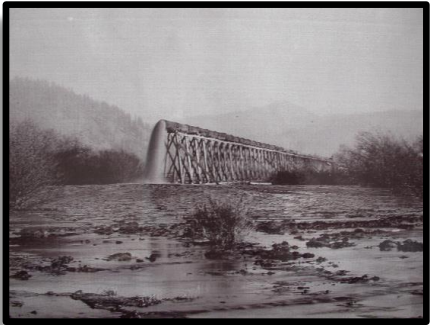
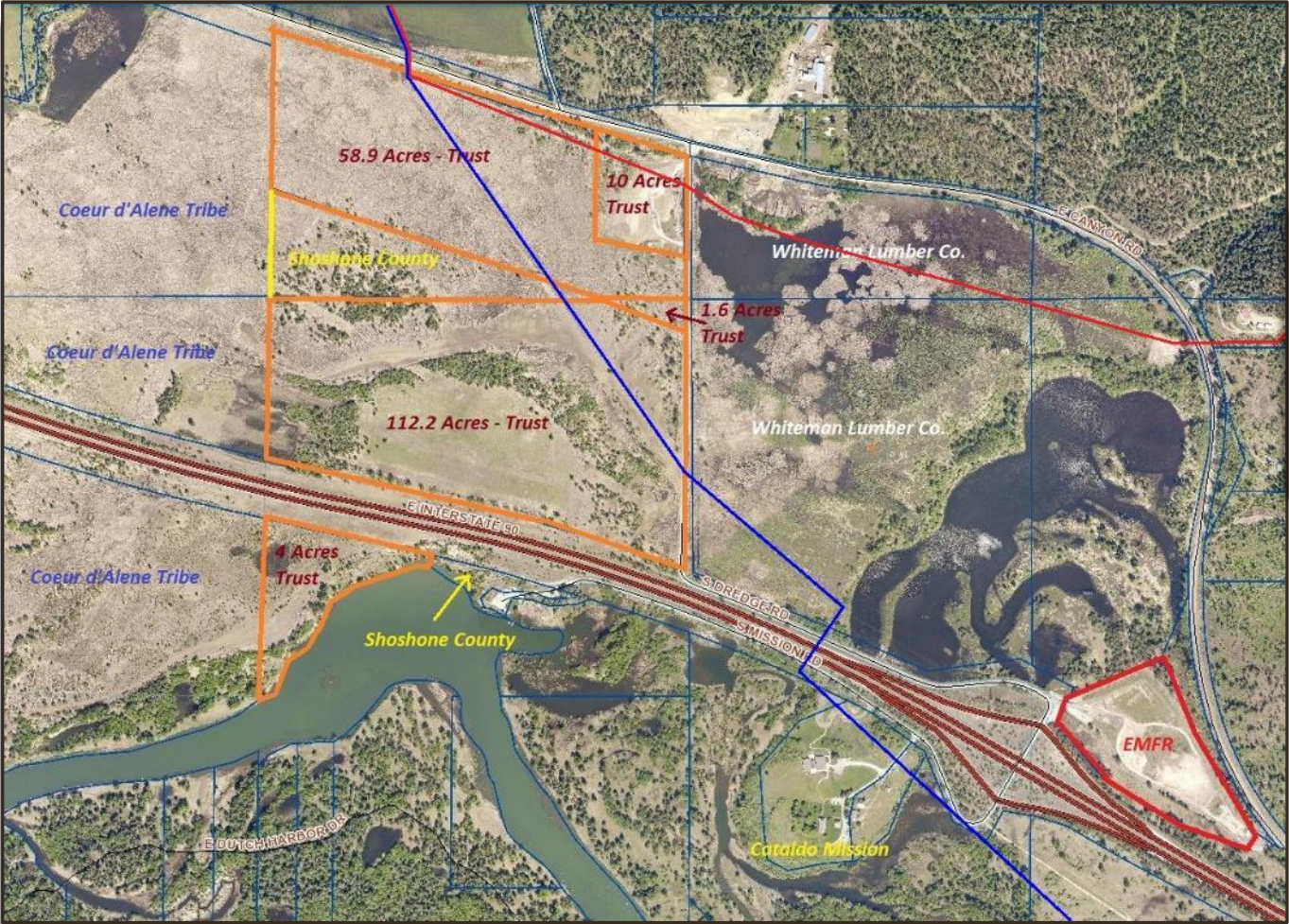
South River Road Property



Recording in Progress



Dredge Road Property



Recording in Progress



Decision to be announced

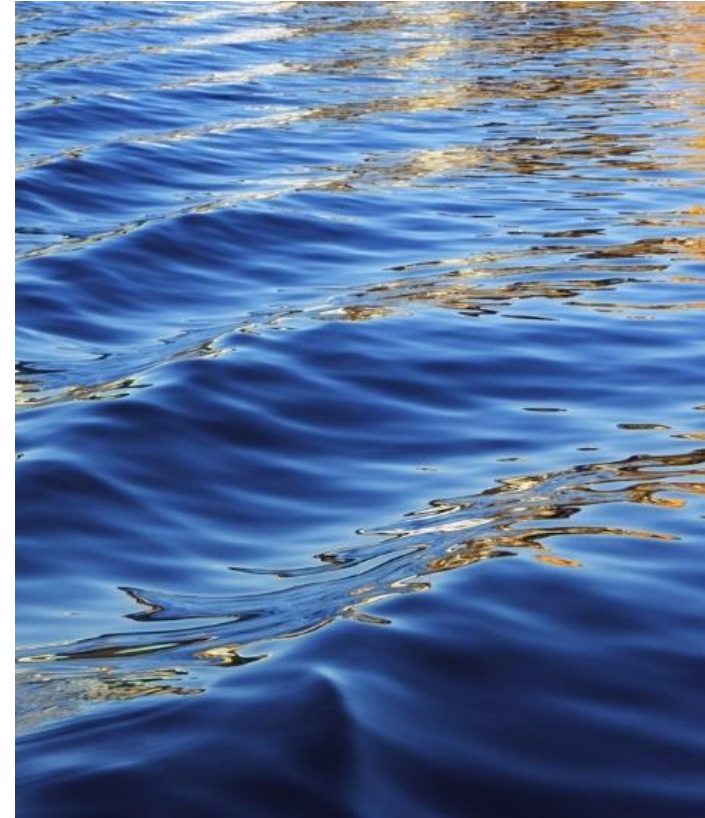
- The location of the new WCA will be announced at the May 18th Basin Environmental Improvement Project Commission meeting.
- Please provide any information you feel would be helpful, or is critical or missing, for our decision between the South River Road and Dredge Road properties to: hickey.patrick@epa.gov by April 8, 2022.



Thank you!

Patrick Hickey –
EPA Region 10 RPM

hickey.patrick@epa.gov



Recording in Progress

