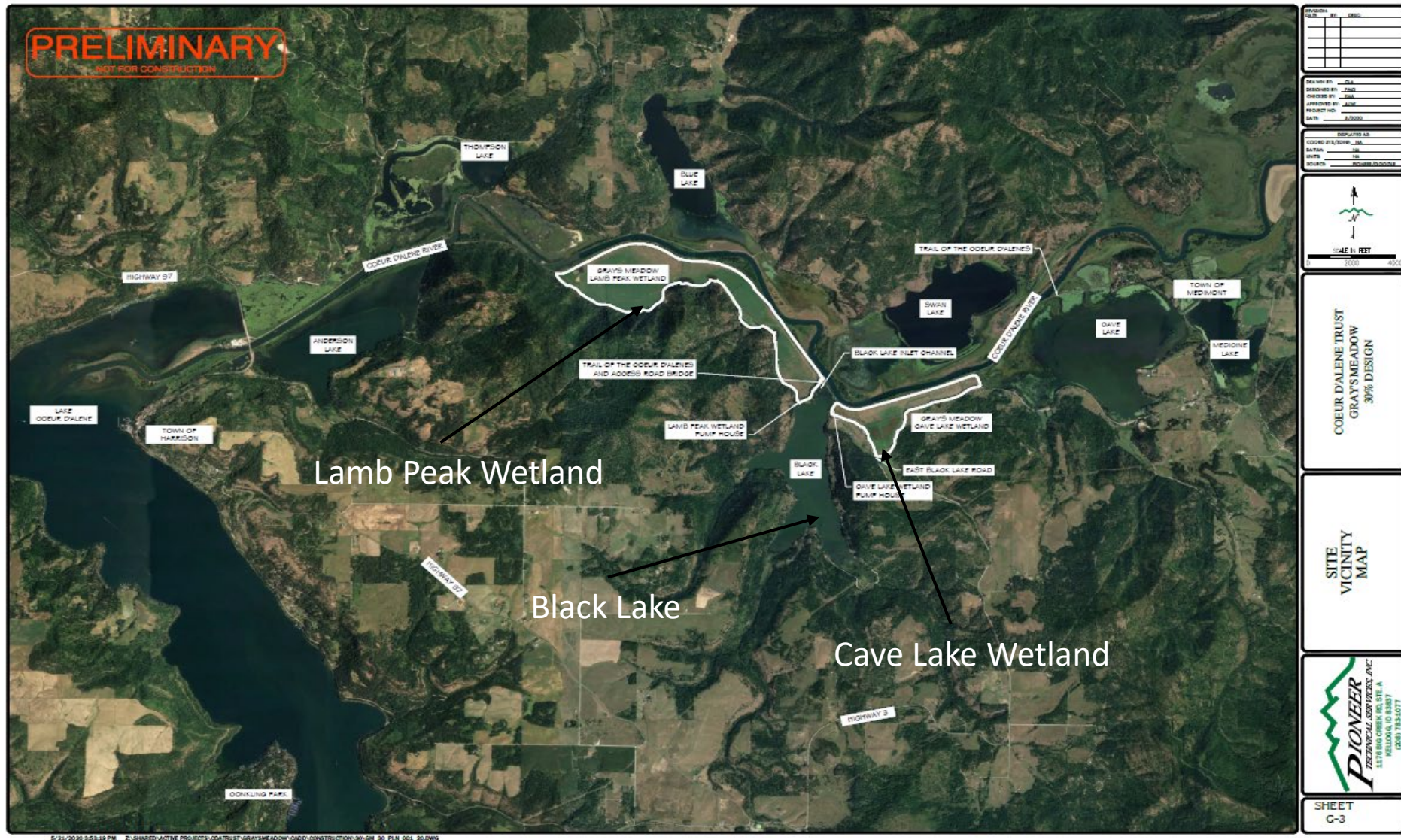


# Lower Basin 2021 Work

Update & Path Forward



# Gray's Meadow Overview





# Gray's Meadow Update

## Long-term Goals

---

- Reduce wetland/riparian soil lead to below chronic waterfowl toxicity levels (530 ppm)
- Improve infrastructure and mitigate recontamination risks
- Convert monotypic agriculture back to wetland/riparian habitat to support diverse native plant communities
- Restore and replicate natural structures and processes
  - Microtopography
  - Promote hydrological variability (depth, duration, and timing of inundation, nutrient cycling)
- Improve water quality in Black Lake
  - Eliminate former ag inputs/nutrients
- Public land - provide clean recreational, educational and cultural opportunities



# 2020 Field Investigations

## Wetlands and Infrastructure Assessment

Soil samples from 140 borings

geotechnical samples from 26 locations

Historical and cultural/archeological coordination



## Water Assessment

Installed 5 groundwater monitoring wells and 10 piezometers







# Path Forward

## **March-May 2021**

- Complete Cave Lake field pump improvements → permanently realign pump discharge from Black Lake to the CDA River in March 2021.
- Winter gravity drain and pump from Lambs Peak field to tie channel and Black Lake necessary to facilitate construction of Lambs Peak realignment from Black Lake to CDA River in September 2021.

## **May – September 2021**

- Conduct Cave Lake Field tilling studies
- Complete 60% Design
- Continue Reed Canary Grass control to support remediation/restoration

## **September – December 2021**

- Complete Lambs Peak field pump improvements and realign pump discharge from Black Lake to CDA River and improve access road.

# Dudley Reach In- Channel Pilot Project

CDA Trust has initiated Planning Processes for In-Channel Pilot

The first order of business: Location


2<sup>nd</sup> Order of Business: Technology Selection (capping, dredging, sills, etc.)

Schedule: Estimated 4-5 Years for:

- ARAR compliance (Cultural Resources, Endangered Species, etc)
- Planning/Pre-Design Data Collection/Waste Disposal if needed
- Design
- Logistical Planning/Access
- Implementation



# Thank You!

An aerial photograph of a river winding through a landscape. The river is dark blue, contrasting with the surrounding green grass and yellow wildflowers. The river has several meanders and small islands. A white arrow points from the bottom left towards a specific bend in the river. The surrounding area is a mix of dense green forest and open fields with yellow wildflowers.

Remediated S.Fork CDAR Channel ~ 2012, near Kellogg, ID. For most of the 20<sup>th</sup> century this river ran milky white with tailings