

BEIPC QUARTERLY MEETING

2021 FIELD SEASON & BUDGET UPDATE

BONNIE ARTHUR, EPA REGION 10 • MARCH 10, 2021

PRESENTATION TOPICS

UPPER BASIN

- **NINEMILE CREEK**
- **CANYON CREEK**
- **PINE CREEK**

BASIN PROPERTY

REMEDIATION PROGRAM

DISPOSAL FACILITIES

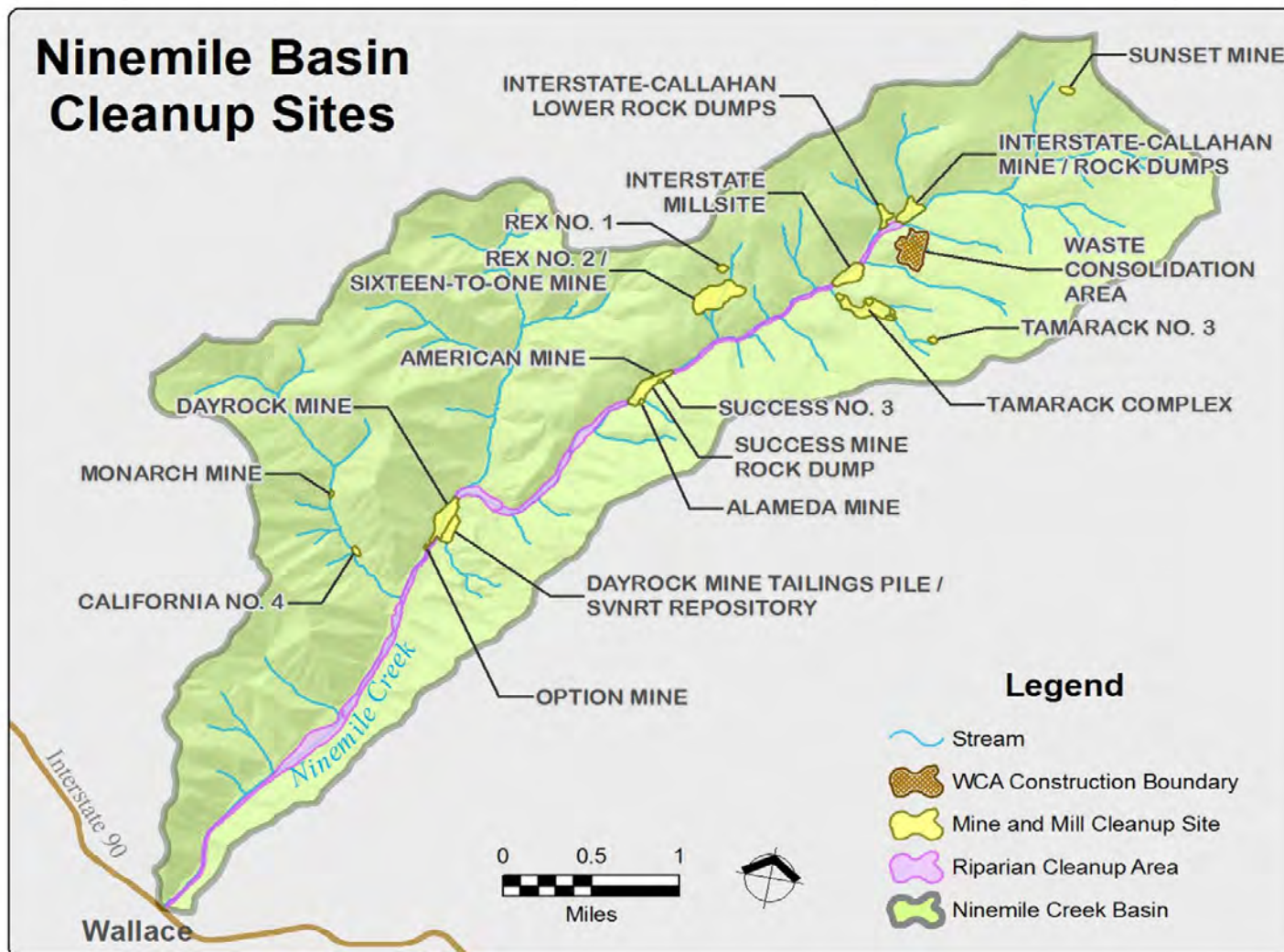
BUDGET UPDATE

BOX RECREATIONAL SITES

(A. HELKEY, DEQ)

**LOWER BASIN (ED MOREEN,
EPA)**





EAST FORK NINEMILE WCA



EAST FORK NINEMILE WCA



EAST FORK NINEMILE WCA



TAMARACK COMPLEX



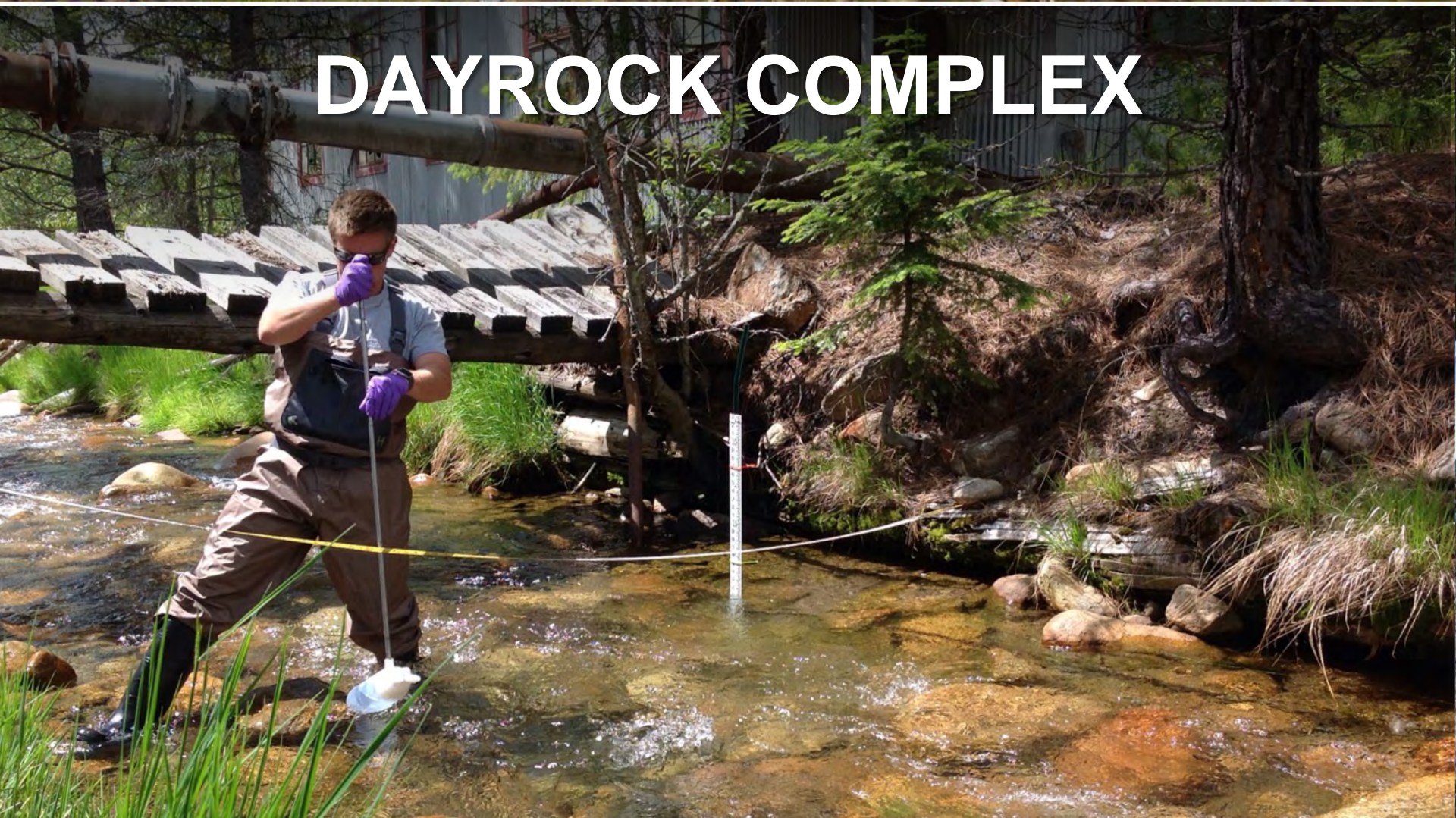
LOWER EAST FORK NINEMILE CREEK



LOWER EAST FORK NINEMILE

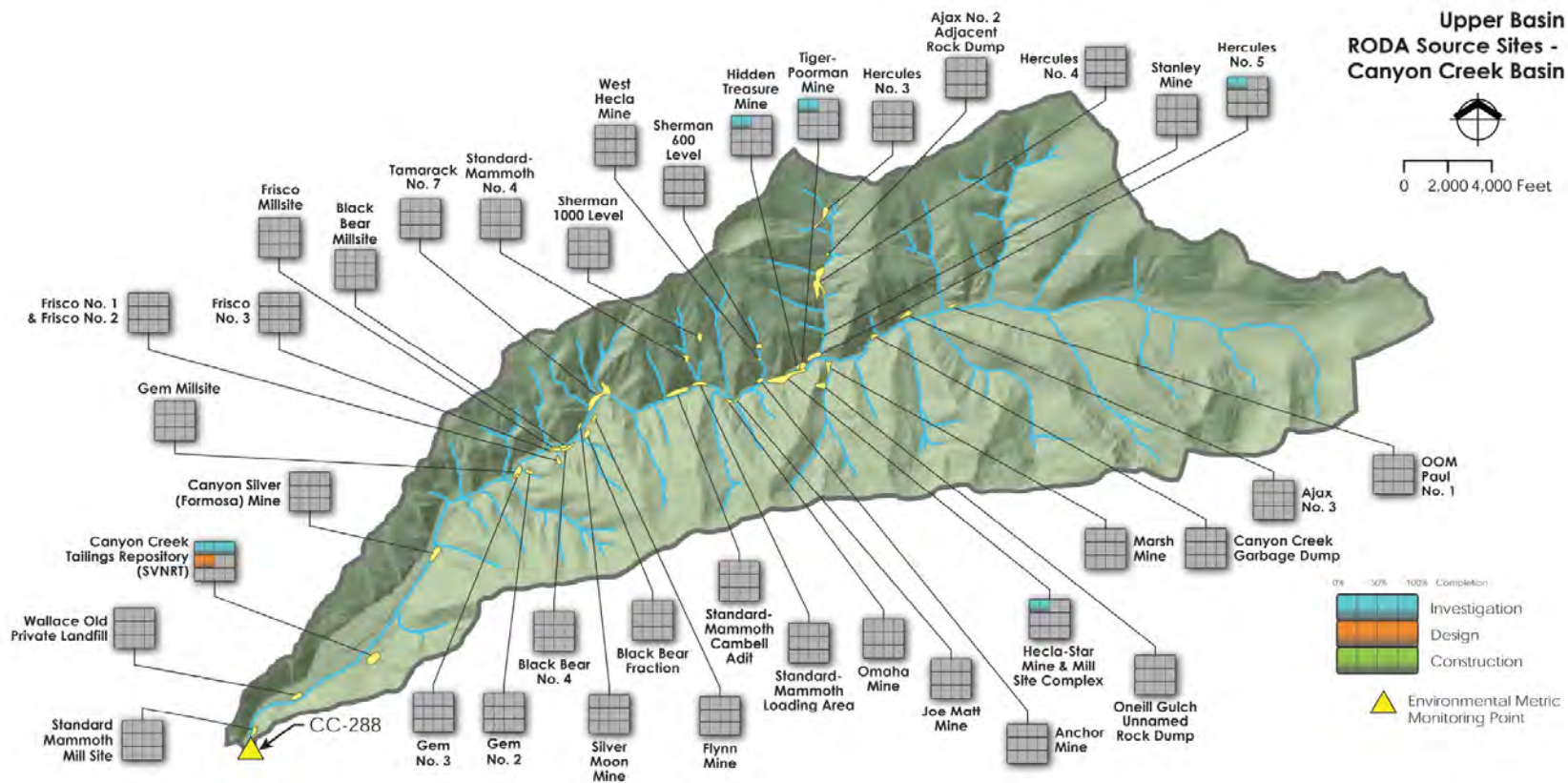
LOWER EFNM

DAYROCK COMPLEX



CANYON CREEK BASIN

BH Superfund Site — Upper Basin Update



CANYON COMPLEX REPOSITORY

WASTE CONSOLIDATION AREA



HECLA STAR COMPLEX



TAMARACK #7



BLACKBEAR FRACTION/FLYNN MINE

GEM MINE



STANDARD MAMMOTH



PINE CREEK BASIN

DOUGLAS MINE

PINE CREEK BASIN

BPRP SUBSTANTIALLY COMPLETE

2021 ACTIVITIES

- Continue maintaining drinking water filtration systems at 6 homes

-POSSIBLE CLEANUPS AT PROPERTIES WHERE THERE ARE REMAINING ACCESS ISSUES

- Not all residents have given access yet for sampling and cleanup

- Sale of unsampled & un-remediated properties could lead to possible cleanups



DISPOSAL FACILITIES

UPPER BASIN

- Lower Burke Canyon
- Big Creek & Big Creek Annex

BOX

- Page Repository

LOWER BASIN

- East Mission Flats



RECREATIONAL SITES

EDUCATION





Play Safe. Protect Your Health.

Keep Clean



Wash your hands and face with clean water or wipes before eating or drinking.



Wash toys, bottles, and pacifiers if they come in contact with soil, sand, or dust.



Remove dirt from clothes, toys, pets, cars, boats, and camping equipment before you leave. Wash all items when you return home.



Eat Clean



Drink, cook, and wash with bottled water or water from home. Do not use river water.



Eat at a table or on a clean blanket, not bare ground.



Follow fish consumption advisories, especially for pregnant women and children. Find current advisories at: fishadvisory.dhw.idaho.gov

Play Clean



Play in grassy areas and avoid loose soil, sand, dust, and muddy areas.



The soils and sediments in this area contain harmful levels of lead, arsenic, and other heavy metals.

Young children and pregnant women are at greatest risk from exposure. It is easy to reduce exposure and enjoy your time recreating in the Coeur d'Alene Basin by following the safety tips above.

Be aware.

Some species of fish in the Coeur d'Alene Basin are known to contain contaminants, such as mercury, that can be dangerous to the developing child. Children under the age of 15 and women of childbearing age (especially if pregnant, planning to become pregnant, or nursing) should limit consumption of these types of fish.

Largemouth Bass Smallmouth Bass Bluegill Black Crappie White Crappie Yellow Perch Pumpkinseed Suckers



Kokanee Salmon Bullhead Catfish Cutthroat Trout Rainbow Trout Brook Trout Tench Channel Catfish



Play Safe. Protect Your Health.

The soils and sediments in this area contain harmful levels of lead, arsenic, and other heavy metals.

Young children and pregnant women are at greatest risk from exposure. It is easy to reduce exposure and enjoy your time recreating in the Coeur d'Alene Basin by following the safety tips below.



Wash your hands and face with clean water or wipes before eating or drinking.



Wash toys, bottles, and pacifiers if they come in contact with soil, sand, or dust.



Remove dirt from clothes, toys, pets, cars, boats, and camping equipment before you leave. Wash all items when you return home.



Drink, cook, and wash with bottled water or water from home. Do not use river water.



Eat at a table or on a clean blanket, not bare ground. Follow fish consumption advisories, especially for pregnant women and children.



Find current advisories at: fishadvisory.dhw.idaho.gov



Play in grassy areas and avoid loose soil, sand, dust, and muddy areas.

Keep Clean

Eat Clean

Play Clean

You are here.



Be aware.



The picture above shows a boat ramp covered with sediment. Sediment deposits such as these are contaminated with lead, arsenic, and other heavy metals. Please contact Panhandle Health District if you see a boat launch or parking area covered with lots of loose sediment (like this photo). Make sure you clean your boats and vehicles before leaving the area so you do not bring contaminants home.



Panhandle Health District
Healthy People in Healthy Communities

Contact Panhandle Health District at:
(208) 783-0707
or visit: deq.idaho.gov/playclean



Panhandle Health District
Healthy People in Healthy Communities

Contact Panhandle Health District at:
(208) 783-0707
or visit: deq.idaho.gov/playclean

CATALDO BOAT LAUNCH RECREATIONAL SITE REMEDIAL ACTION

COEUR D'ALENE WORK TRUST

2009 ASARCO BANKRUPTCY SETTLEMENT

- \$437m deposited into CdA Work Trust Account (3/1=\$634)
- Annual workplan of \$20-24m (upper and lower basin)

USES OF CDA WORK TRUST FUNDS

- Can only be used to fund Record of Decision-selected Basin cleanup actions
- Cannot be used to fund Box cleanup actions.
- Cannot be used to fund oversight of the CdA Trust
- Cannot be used to fund State, Tribe, local governments or
- other Federal agencies work in the Box or Basin.

DEQ RECREATIONAL SITES

THEATER BRIDGE



- Will remove over 2,300 cubic yards of contaminated material.
- Clean cap will be installed.
- ITD will replace fencing in disrepair.
- Under contract for Spring 2021

SMELTERVILLE POND

