

Recreation Sites Project Focus Team

BEIPC Meeting Update



Basin Environmental Improvement Project Commission
Coeur d'Alene, Idaho
November 20, 2019

Dan McCracken, P.E.

Presentation Overview

- Project Focus Team Purpose
- Basin Completed Projects
- Box Projects Update
- Health Information Signage Update
- Ongoing and Future Work

This map illustrates the San Antonio River watershed, highlighting various sites for water quality sampling. The river is shown flowing from the north towards the south, with numerous tributaries and wetlands. Key locations marked include:

- West of Blue Lake**
- RM135 Long Beach/Springston**
- Across River from Springston**
- Springston Beach Site**
- Thompson Lake**
- Thompson Marsh**
- Springston**
- West Beach near Medmont**
- Medmont**
- Medmont Boat Ramp**
- Rainy Hill Fishing Area**
- Rainy Hill Picnic Area**
- Hill Camping Area Medmont**
- Medmont Lake**
- Blackrock Gulch**
- Blackrock Gulch Marsh**
- Quarry Beach**
- Near East End of Killarney Lake**
- Beach near Canal to Killarney Lake**
- Beach Upstream from Quarry**
- RV Park across from Blackrock Gulch**
- Blackrock Gulch Beach**
- Beach below Ward Ridge**
- Lane Beach**
- Killarney Lake Boat Launch**
- West of Rose Lake**
- Mouth of 4th of July Marsh**
- Old Mission State Park Boat Launch**
- Beach in Mission Flats**
- Old Mission State Park**
- Walden's Slough**
- Mexican Slough**
- Cabrillo**
- Skull Gulch Beach**
- South of Mission Flats**
- Bull Run Peak Beach**
- East of Rose Lake**
- East of Blackrock Gulch Marsh**
- Quarry Beach**
- Near East End of Killarney Lake**
- Beach near Canal to Killarney Lake**
- Medmont Boat Ramp**
- Rainy Hill Fishing Area**
- Rainy Hill Picnic Area**
- Hill Camping Area Medmont**
- Medmont Lake**
- Blackrock Gulch**
- Blackrock Gulch Marsh**
- Quarry Beach**
- Near East End of Killarney Lake**
- Beach near Canal to Killarney Lake**
- Medmont Boat Ramp**
- Rainy Hill Fishing Area**
- Rainy Hill Picnic Area**
- Hill Camping Area Medmont**
- Medmont Lake**
- Blackrock Gulch**
- Blackrock Gulch Marsh**
- Quarry Beach**
- Near East End of Killarney Lake**
- Beach near Canal to Killarney Lake**
- Medmont Boat Ramp**
- Rainy Hill Fishing Area**
- Rainy Hill Picnic Area**
- Hill Camping Area Medmont**
- Medmont Lake**
- Blackrock Gulch**
- Blackrock Gulch Marsh**
- Quarry Beach**
- Near East End of Killarney Lake**
- Beach near Canal to Killarney Lake**
- Medmont Boat Ramp**
- Rainy Hill Fishing Area**
- Rainy Hill Picnic Area**
- Hill Camping Area Medmont**
- Medmont Lake**
- Blackrock Gulch**
- Blackrock Gulch Marsh**
- Quarry Beach**
- Near East End of Killarney Lake**
- Beach near Canal to Killarney Lake**
- Medmont Boat Ramp**
- Rainy Hill Fishing Area**
- Rainy Hill Picnic Area**
- Hill Camping Area Medmont**
- Medmont Lake**
- Blackrock Gulch**
- Blackrock Gulch Marsh**
- Quarry Beach**
- Near East End of Killarney Lake**
- Beach near Canal to Killarney Lake**
- Medmont Boat Ramp**
- Rainy Hill Fishing Area**
- Rainy Hill Picnic Area**
- Hill Camping Area Medmont**
- Medmont Lake**
- Blackrock Gulch**
- Blackrock Gulch Marsh**
- Quarry Beach**
- Near East End of Killarney Lake**
- Beach near Canal to Killarney Lake**
- Medmont Boat Ramp**
- Rainy Hill Fishing Area**
- Rainy Hill Picnic Area**
- Hill Camping Area Medmont**
- Medmont Lake**
- Blackrock Gulch**
- Blackrock Gulch Marsh**
- Quarry Beach**
- Near East End of Killarney Lake**
- Beach near Canal to Killarney Lake**
- Medmont Boat Ramp**
- Rainy Hill Fishing Area**
- Rainy Hill Picnic Area**
- Hill Camping Area Medmont**
- Medmont Lake**
- Blackrock Gulch**
- Blackrock Gulch Marsh**
- Quarry Beach**
- Near East End of Killarney Lake**
- Beach near Canal to Killarney Lake**
- Medmont Boat Ramp**
- Rainy Hill Fishing Area**
- Rainy Hill Picnic Area**
- Hill Camping Area Medmont**
- Medmont Lake**
- Blackrock Gulch**
- Blackrock Gulch Marsh**
- Quarry Beach**
- Near East End of Killarney Lake**
- Beach near Canal to Killarney Lake**
- Medmont Boat Ramp**
- Rainy Hill Fishing Area**
- Rainy Hill Picnic Area**
- Hill Camping Area Medmont**
- Medmont Lake**
- Blackrock Gulch**
- Blackrock Gulch Marsh**
- Quarry Beach**
- Near East End of Killarney Lake**
- Beach near Canal to Killarney Lake**
- Medmont Boat Ramp**
- Rainy Hill Fishing Area**
- Rainy Hill Picnic Area**
- Hill Camping Area Medmont**
- Medmont Lake**
- Blackrock Gulch**
- Blackrock Gulch Marsh**
- Quarry Beach**
- Near East End of Killarney Lake**
- Beach near Canal to Killarney Lake**
- Medmont Boat Ramp**
- Rainy Hill Fishing Area**
- Rainy Hill Picnic Area**
- Hill Camping Area Medmont**
- Medmont Lake**
- Blackrock Gulch**
- Blackrock Gulch Marsh**
- Quarry Beach**
- Near East End of Killarney Lake**
- Beach near Canal to Killarney Lake**
- Medmont Boat Ramp**
- Rainy Hill Fishing Area**
- Rainy Hill Picnic Area**
- Hill Camping Area Medmont**
- Medmont Lake**
- Blackrock Gulch**
- Blackrock Gulch Marsh**
- Quarry Beach**
- Near East End of Killarney Lake**
- Beach near Canal to Killarney Lake**
- Medmont Boat Ramp**
- Rainy Hill Fishing Area**
- Rainy Hill Picnic Area**
- Hill Camping Area Medmont**
- Medmont Lake**
- Blackrock Gulch**
- Blackrock Gulch Marsh**
- Quarry Beach**
- Near East End of Killarney Lake**
- Beach near Canal to Killarney Lake**
- Medmont Boat Ramp**
- Rainy Hill Fishing Area**
- Rainy Hill Picnic Area**
- Hill Camping Area Medmont**
- Medmont Lake**
- Blackrock Gulch**
- Blackrock Gulch Marsh**
- Quarry Beach**
- Near East End of Killarney Lake**
- Beach near Canal to Killarney Lake**
- Medmont Boat Ramp**
- Rainy Hill Fishing Area**
- Rainy Hill Picnic Area**
- Hill Camping Area Medmont**
- Medmont Lake**
- Blackrock Gulch**
- Blackrock Gulch Marsh**
- Quarry Beach**
- Near East End of Killarney Lake**
- Beach near Canal to Killarney Lake**
- Medmont Boat Ramp**
- Rainy Hill Fishing Area**
- Rainy Hill Picnic Area**
- Hill Camping Area Medmont**
- Medmont Lake**
- Blackrock Gulch**
- Blackrock Gulch Marsh**
- Quarry Beach**
- Near East End of Killarney Lake**
- Beach near Canal to Killarney Lake**
- Medmont Boat Ramp**
- Rainy Hill Fishing Area**
- Rainy Hill Picnic Area**
- Hill Camping Area Medmont**
- Medmont Lake**
- Blackrock Gulch**
- Blackrock Gulch Marsh**
- Quarry Beach**
- Near East End of Killarney Lake**
- Beach near Canal to Killarney Lake**
- Medmont Boat Ramp**
- Rainy Hill Fishing Area**
- Rainy Hill Picnic Area**
- Hill Camping Area Medmont**
- Medmont Lake**
- Blackrock Gulch**
- Blackrock Gulch Marsh**
- Quarry Beach**
- Near East End of Killarney Lake**
- Beach near Canal to Killarney Lake**
- Medmont Boat Ramp**
- Rainy Hill Fishing Area**
- Rainy Hill Picnic Area**
- Hill Camping Area Medmont**
- Medmont Lake**
- Blackrock Gulch**
- Blackrock Gulch Marsh**
- Quarry Beach**
- Near East End of Killarney Lake**
- Beach near Canal to Killarney Lake**
- Medmont Boat Ramp**
- Rainy Hill Fishing Area**
- Rainy Hill Picnic Area**
- Hill Camping Area Medmont**
- Medmont Lake**
- Blackrock Gulch**
- Blackrock Gulch Marsh**
- Quarry Beach**
- Near East End of Killarney Lake**
- Beach near Canal to Killarney Lake**
- Medmont Boat Ramp**
- Rainy Hill Fishing Area**
- Rainy Hill Picnic Area**
- Hill Camping Area Medmont**
- Medmont Lake**
- Blackrock Gulch**
- Blackrock Gulch Marsh**
- Quarry Beach**
- Near East End of Killarney Lake**
- Beach near Canal to Killarney Lake**

Recreation PFT Purpose

- Manage Human Health Risk from exposures during Recreational Activities
- Identify:
 - Priority sites or activities
 - Maintained sites to replace highly contaminated areas
 - Actions to add to the risk management toolbox
 - Locations to apply certain actions or ideas for pilot projects

Basin Completed Projects

- Seasonal Hand Washing Stations
 - Cataldo, Rainy Hill, Rose Lake, Medimont
- Health Information Signage
- Ninemile Fishing Pond
- Larson Road Fishing Pond
- Grays Bridge Road
- Coeur d'Alene River Road Parking Pullout

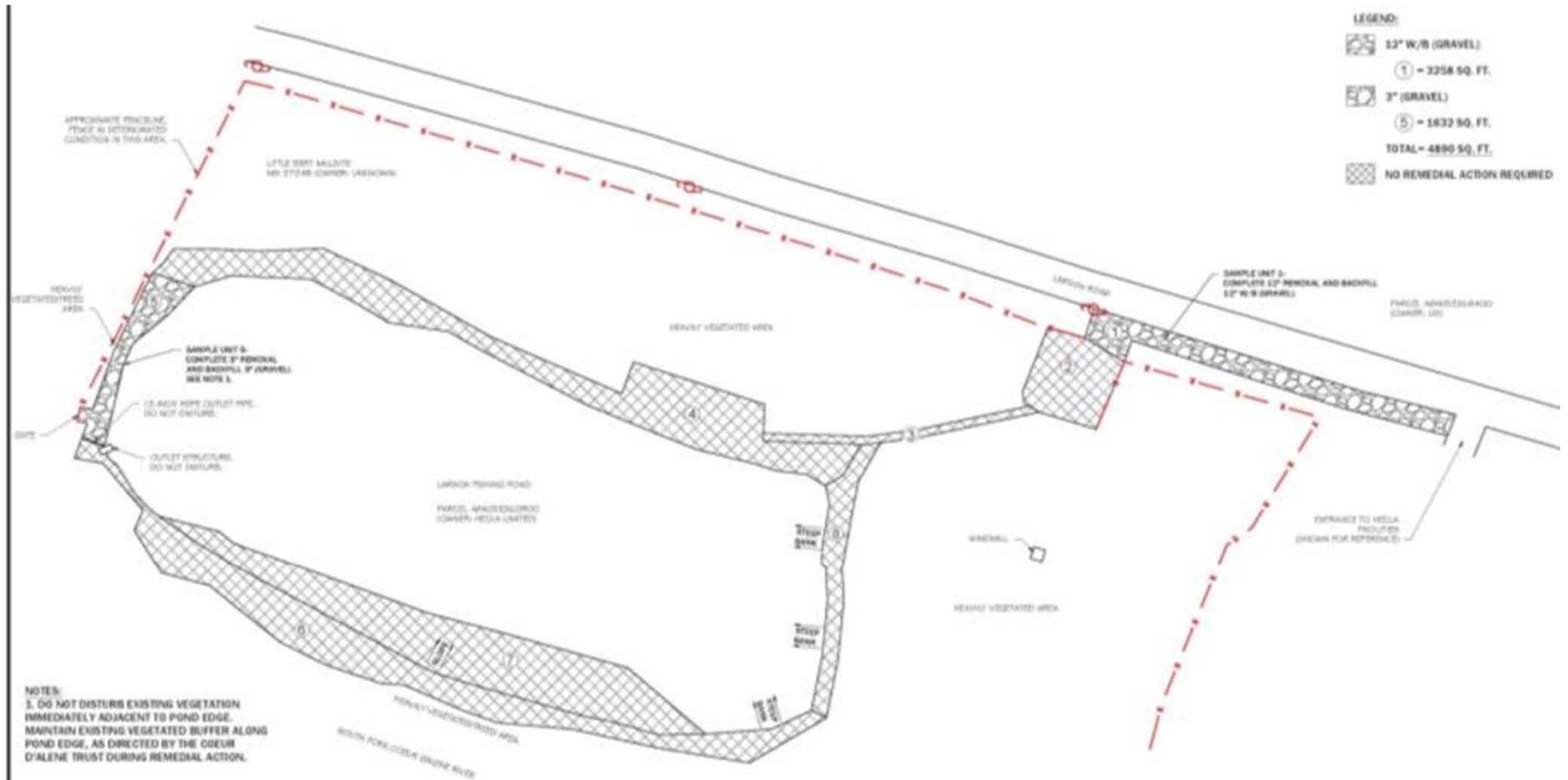
Hand Washing Station and Signage



Nine Mile Fishing Pond



Larson Road Fishing Pond



Grays Bridge Area – Woodland Park



Grays Bridge Area – Woodland Park



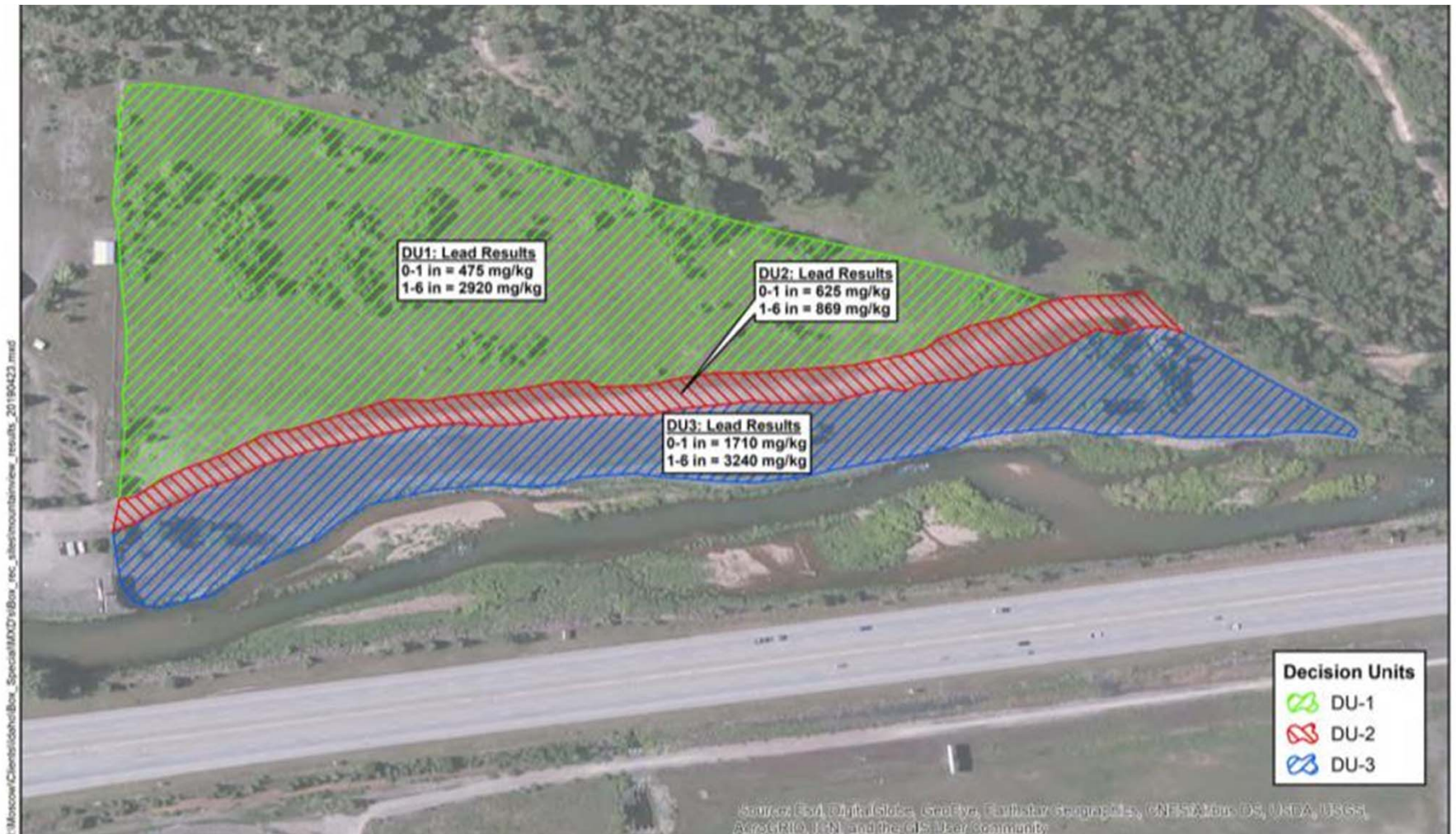
Coeur d'Alene River Road Pullout



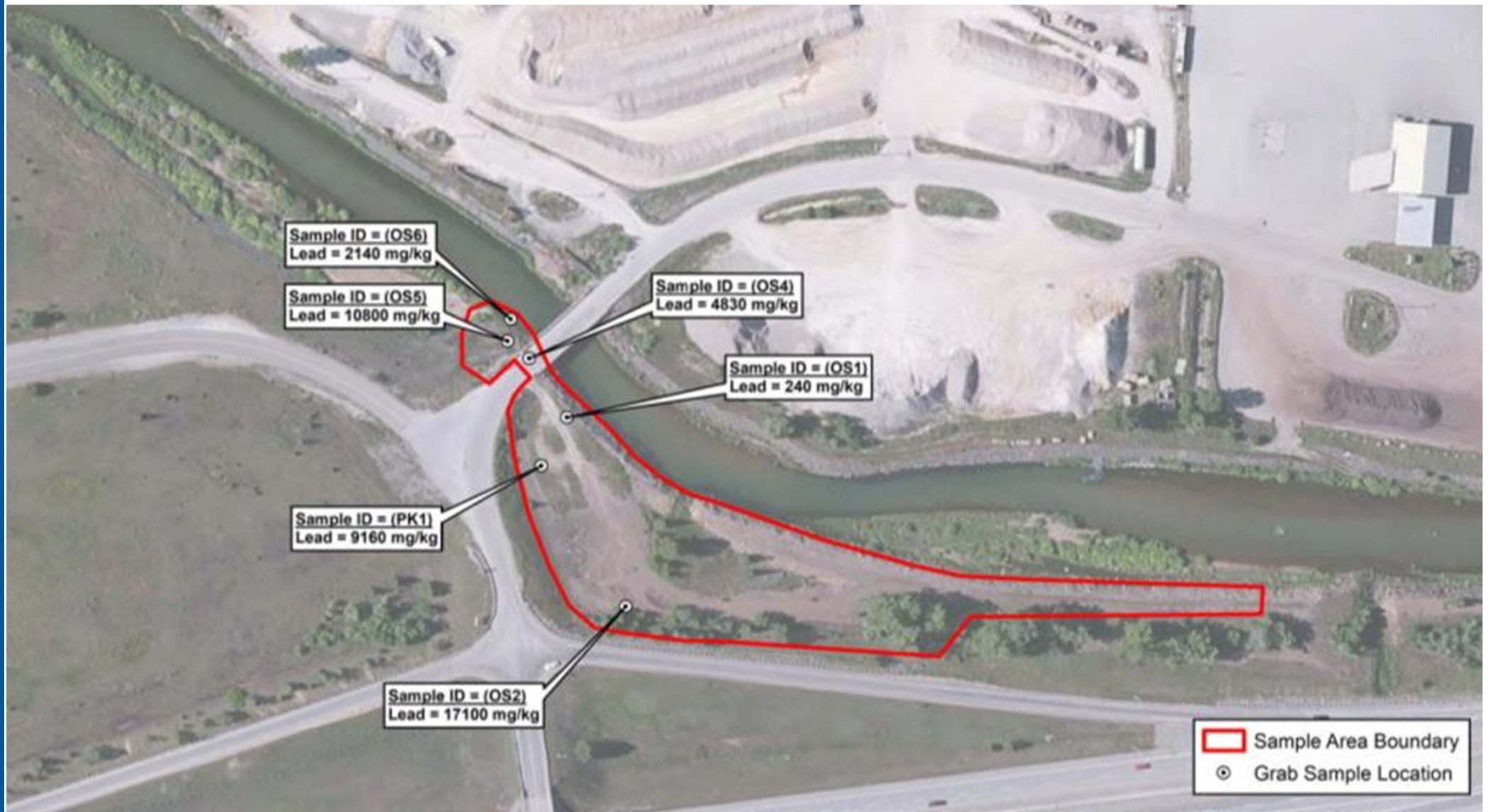
Box Site Status

- Mountain View Park, Kellogg
- Theater Bridge River Access
- Airport River Walk
- Smelterville Flats
- Pinehurst Trailhead

Mountain View Park



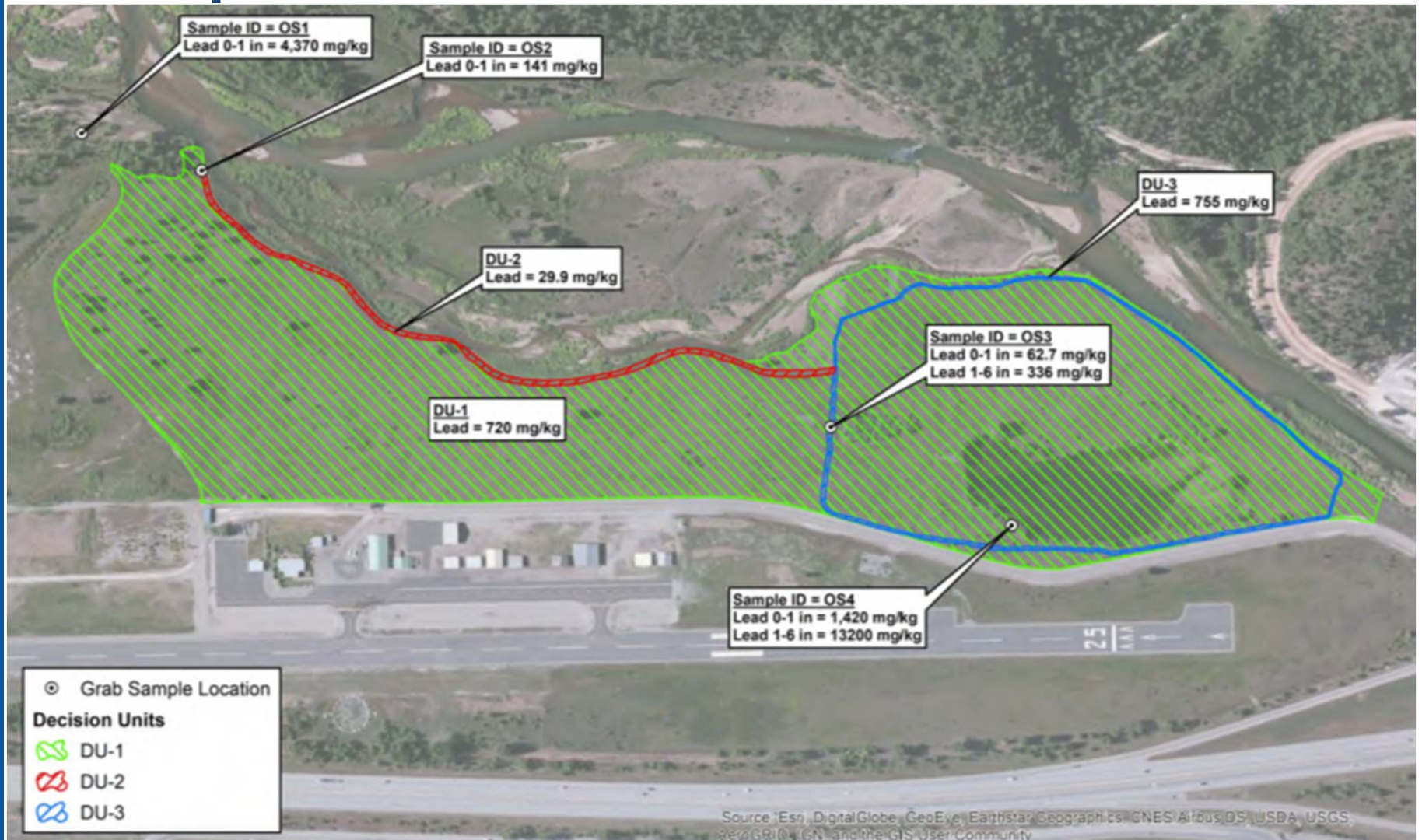
Theater Bridge River Access



Theater Bridge River Access



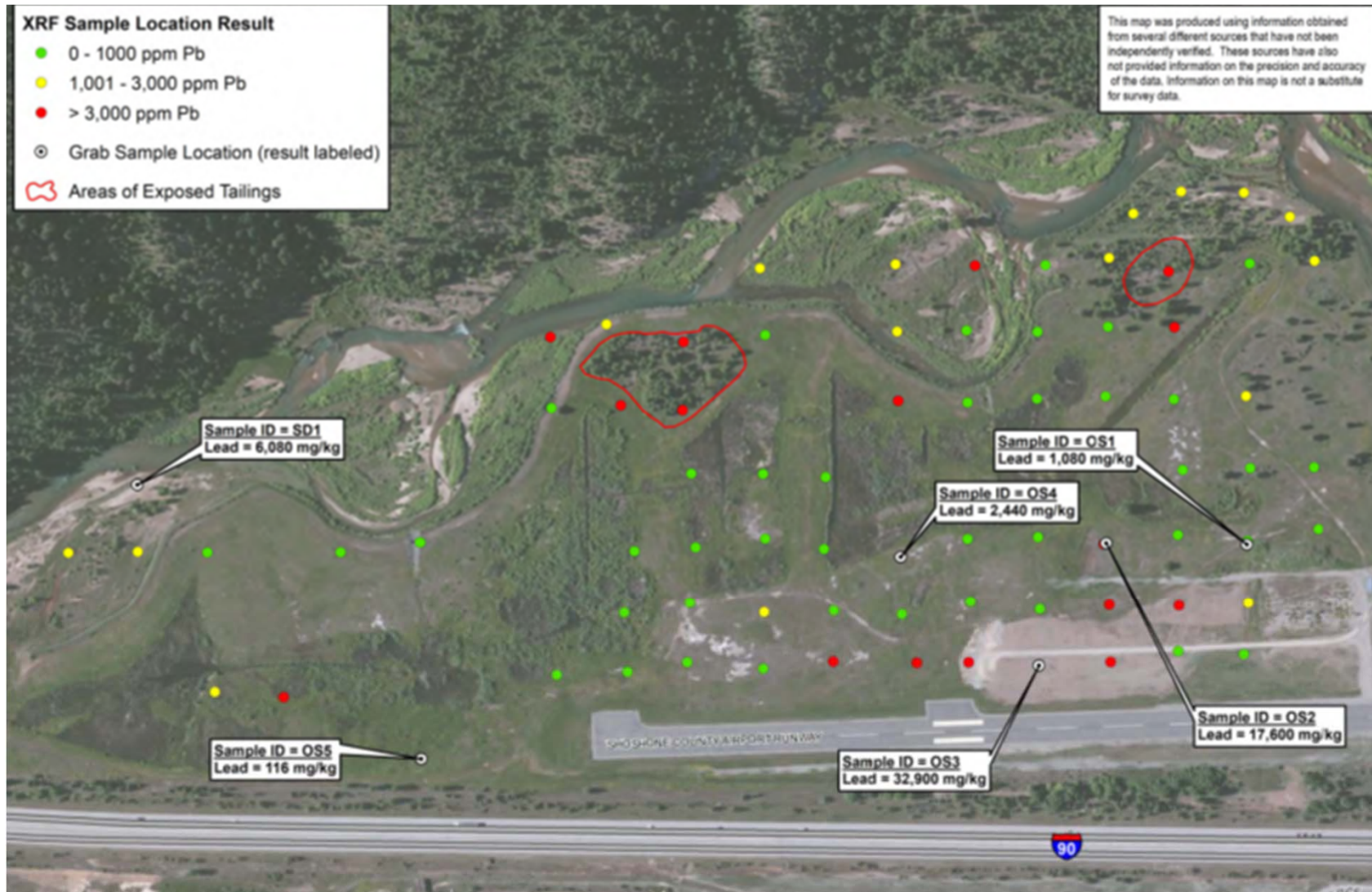
Airport River Walk



Airport River Walk



Smelterville Flats

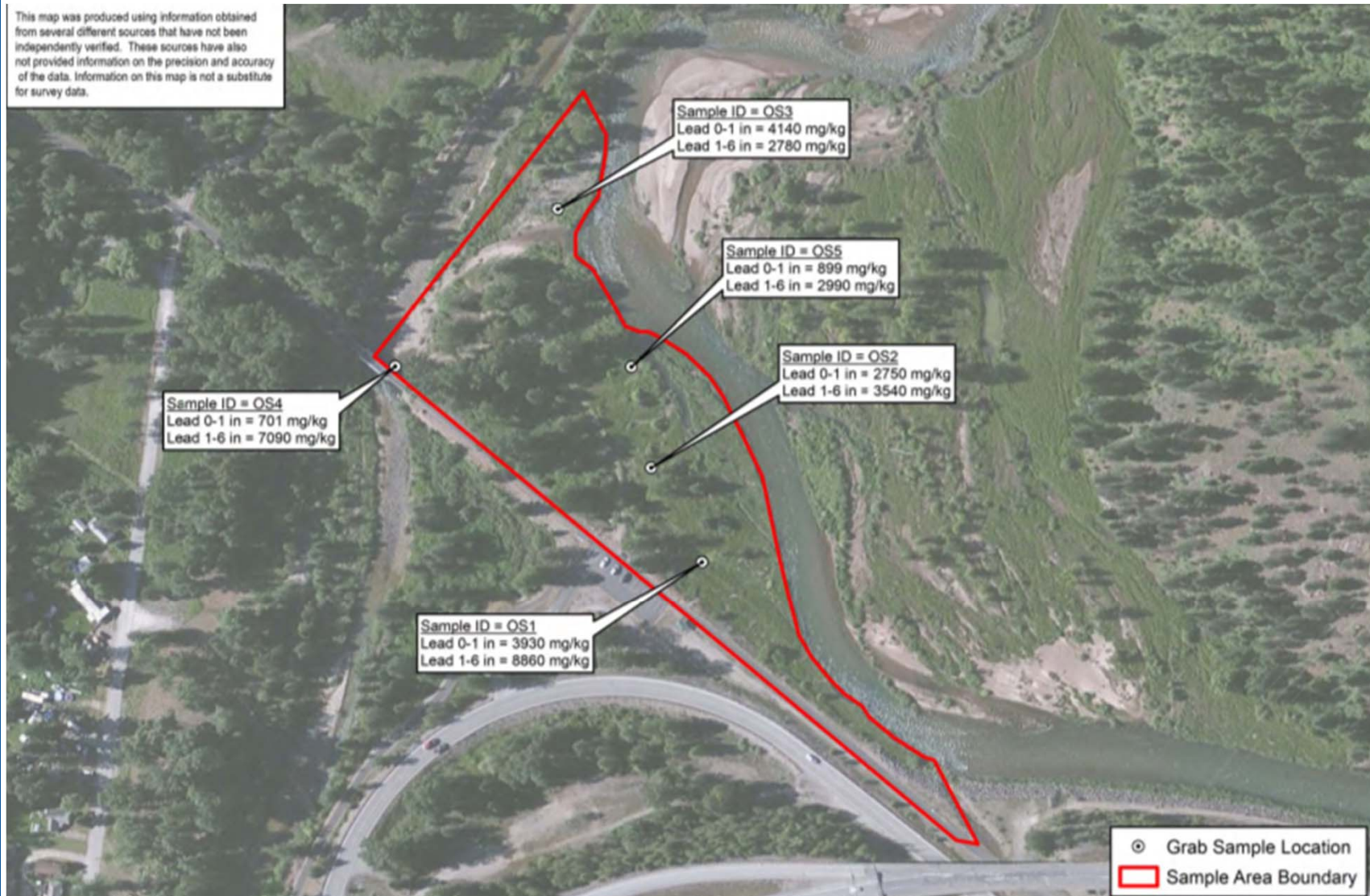


Pinehurst Trailhead



Pinehurst Trailhead

This map was produced using information obtained from several different sources that have not been independently verified. These sources have also not provided information on the precision and accuracy of the data. Information on this map is not a substitute for survey data.



Pinehurst Trailhead



Pinehurst Trailhead



Health Information Signage



Site Specific Signs - 12 Installed



Small Health Information Signs – 23 Installed

CAUTION

High levels of lead, arsenic, and other heavy metals from past mining activities are found in the soil, sediments, and water at this location.

**Play Safe.
Protect Your Health.**

- ✂ Stay out of old mines, mining structures, and buildings.
Abandoned buildings, mining structures, and mine openings are dangerous due to rotting wood, rusty nails, falling debris, unstable rock, open shafts, and oxygen-depleted air. Buildings and structures could collapse at any time. Stay out and stay alive.
- ✂ Stay on trails and off mine tailing piles.
- ✂ Wash your hands with clean water or wipes before eating or drinking.
- ✂ Do not smoke at site—dry wood is extremely flammable.
- ✂ Avoid the creek for swimming or washing hands.
- ✂ Wear proper off-road gear and avoid breathing in dust as much as possible to reduce your exposure risk.
- ✂ Clean before you leave.
Remove dirt from clothes, toys, pets, cars, and equipment. Dirt tracked home may result in future lead exposure.

Please respect private property.





Panhandle Health District
Healthy People in Healthy Communities

Contact PHD at:
(208) 783-0707
or visit: deq.idaho.gov/playclean

CAUTION

High levels of lead, arsenic, and other heavy metals from past mining activities are found in the soil, sediments, and water at this location.

**Play Safe.
Protect Your Health.**

Pack in your water.
Don't use river water for drinking, cooking, or washing, even if it is filtered.

Wash before you eat.
Wash your hands with clean water or wipes before eating or drinking.

Eat on a clean surface.
Use a table or blanket, not bare ground.

Avoid dusty areas.
Dusty activities can increase your exposure risk.

Clean before you leave.
Remove dirt from clothes, toys, pets, cars, and equipment. Dirt tracked home may result in future lead exposure.

Follow fish advisories.
Follow fish consumption advisories, especially for pregnant women and children.







Panhandle Health District
Healthy People in Healthy Communities

Contact PHD at:
(208) 783-0707
or visit: deq.idaho.gov/playclean

**Play Safe
Protect Your Health**

High levels of lead, arsenic, and other heavy metals from past mining activities are found in the soil, sediments, and water at this location.

Pack in your water.
Don't use river water for drinking, cooking, or washing, even if it is filtered.

Wash before you eat.
Wash your hands with clean water or wipes before eating or drinking.

Eat on a clean surface.
Use a table or blanket, not bare ground.

Avoid dusty areas.
Dusty activities can increase your exposure risk.

Clean before you leave.
Remove dirt from clothes, toys, pets, cars, and equipment. Dirt tracked home may result in future lead exposure.

Follow fish advisories.
Follow fish consumption advisories, especially for pregnant women and children.







Panhandle Health District
Healthy People in Healthy Communities

Contact PHD at:
(208) 783-0707
or visit: deq.idaho.gov/playclean

Health Information Signage

- Replacement of Signs in the Lower Basin along River
- Concise High Visibility Sign
- New Signs Approved by Trail Commission for placement with trail corridor

Health Information Signage



Ongoing and Future Work

- Outreach/Education
 - Continue to Update and Add Signage
 - Targeted Outreach to River Property Owners
 - Promote Use of Remediated and Clean Sites
- Sediment management at public access sites
 - Curbing, Pavers, Hard Surfaces
 - Revegetation, Rock Capping
- Continue to develop youth fishing opportunities

Questions

