

# Basin Commission Meeting

## August 15, 2018

Ed Moreen  
EPA Project Manager  
[Moreen.ed@epa.gov](mailto:Moreen.ed@epa.gov)



# Summary of Lower Basin Structured Decision- Making Process Open House

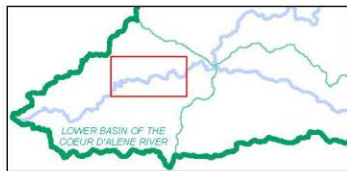
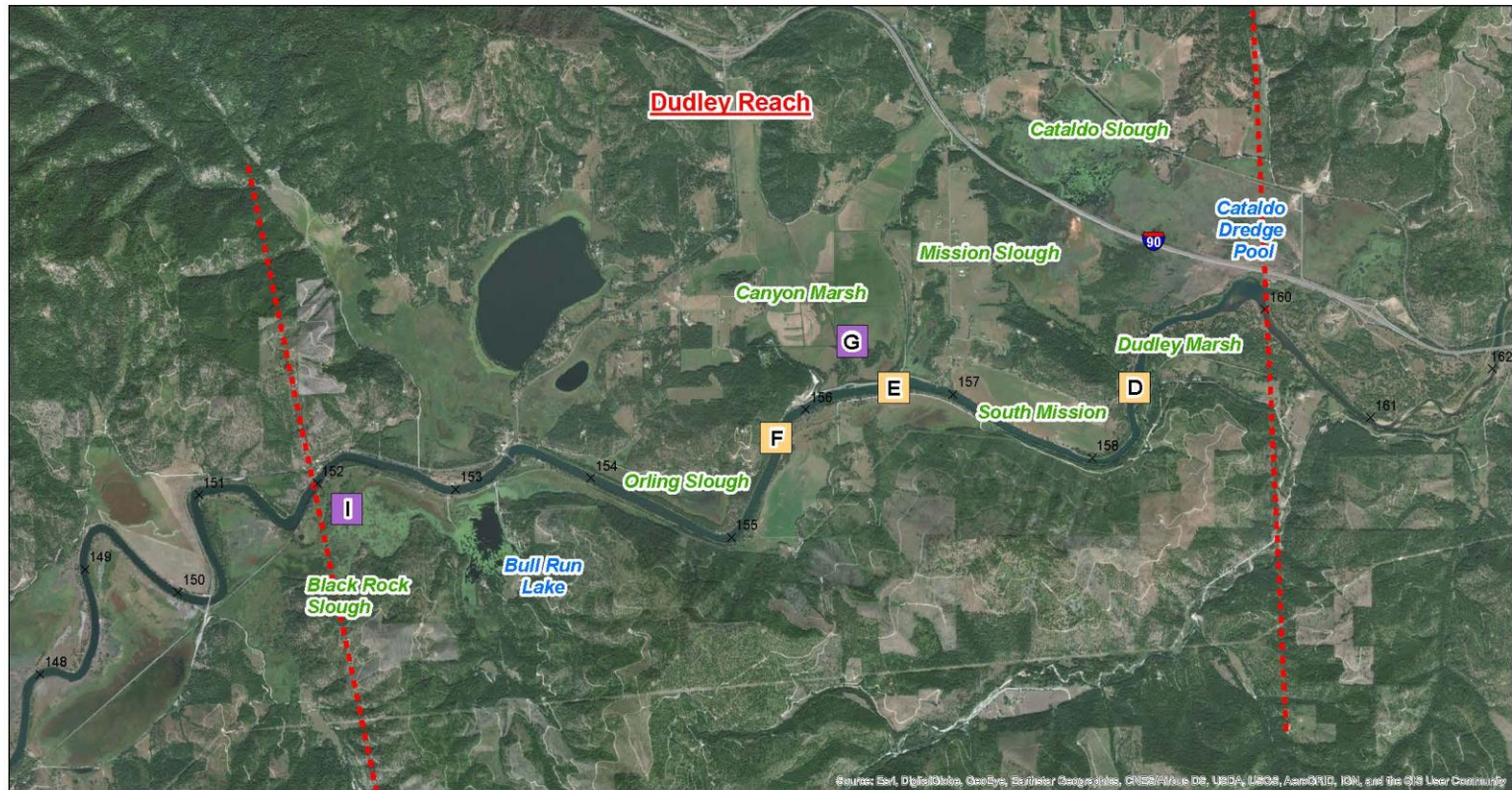
Hosted by CCC on 6/13/18  
@Medimont Grange

# Open House @ Medimont Grange

- Over 30 attendees
- Focused on EPA's Structured Process to prioritize projects for implementation in the Lower Basin
- Brief Presentation was provided to the group on the recent flooding and coring data (presented previously to BEIPC).
- Draft selection criteria was shared with the attendees and input was requested



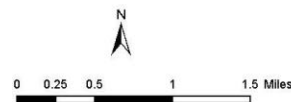
# Shared Overview of Projects



## LEGEND

### Focus Area

- Habitat Remediation
- Human Health
- Source Control



DRAFT

2018 Short List Projects  
Sheet 3/5  
Lower Basin of the Coeur d'Alene River  
June 2018



Note: Labels mark general project locations. Project extents to be determined during future outreach, analysis, and design phases.

# 2018 Short List of Projects

- ☐ 6 Beach Remediation Projects (Human Health)
- ☐ 5 Habitat Remediation Projects (Waterfowl)
- ☐ 7 Source Control Projects

## **Coeur d'Alene Lower Basin Project Selection Process Draft Project List Map**

### **Exhibit 10**

#### **Contents**

- A. Cataldo Reach
- B. Dudley Reach
- C. Killarney Reach
- D. Springston Reach



# Comments received

- “Would be great if ourselves, kids and grandkids could feel safe while recreating on river banks”
- “Let’s get things done and make things better, not wait.”
- 20 years of bank stabilization by NRCS is effective.
- Property values for Lake CDA, how could they change?
- Need to link boat access points with Trail of the CDAs.

# Comments, continued

- Schlepps wetland conversion very engineered, encourage less-engineered solutions
- Need healthier, more diverse aquatic systems/habitat
- Need to reduce waterfowl deaths
- Need private sector/public sector project balance.



# Most important criteria in order - as ranked by participants

- 1) Protect Human health
- 2) Protect Wildlife and Local Ecology
- 3) Prevent recontamination
- 4) Provide New or Improved Long-term Community or Economic Benefits
- 5) Provide Likely Success and Observable Outcomes
- 6) Provide Learning Opportunities to Evaluate Remediation and Cost-Effectiveness
- 7) Ensure Ease of Implementation(partnerships, ownership, etc.)
- 8) Avoid Indirect or Adverse Impacts



# Comments on List of Projects

- Address sources from upstream to downstream using the Work Trust fund
- Need to address the river first then floodplain will naturally clean up
- Is deep-tilling of floodplains being considered?
- Some Remedies don't cost anything, Examples IC's, preventing or managing river jet boat races
- Look at protection from dust exposure at beaches
- Riprap the S-Curves of the River

# Project Comments, Continued

- There is bank erosion at Cataldo Mission area
- Canyon Marsh, if not highly contaminated, could convert from agricultural land to wetlands to create more clean habitat
- Dredge the River starting at Enaville and work downstream, dispose of the spoils in a lateral lake.
- Do a lab scale study (bigger than pilot).  
Dredging and capping tests both. Then monitor.

# Next Steps

- Project scoring is nearing completion
- EPA will select projects after considering:
  - 6/13 CCC Input
  - Weighing Tradeoffs, Priorities, Responsibilities
- Inform and get input from LB Project Focus Team ~ late Oct
- Final Selected Projects → CDA Work Trust Budget Planning 2019/Implementation
  - Design characterization/Design/Contracting/Impl.
- Final Selected Projects → 2019 BEIPC Workplan

# What Questions Do You Have?

