

**Bunker Hill Superfund Site:**

# **Coeur d'Alene Basin Repository Monitoring and Limited Use Repository Updates**

**Citizens Coordination Council**

April 18, 2018

**Craig Cameron**

**U.S. Environmental Protection Agency**



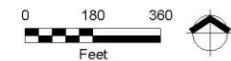


**Figure  
East Mission Flats  
Monitoring Locations**

Coeur d'Alene Trust  
East Mission Flats Repository  
Lower Coeur d'Alene Basin, Idaho

**Legend**

- Interstate Highway
- Road
- Surface Water Location
- Piezometer
- Monitoring Well
- East Mission Flats Repository Boundary



Source: Aerial photograph obtained from ESRI, Inc. ArcGIS Online; watershed and rivers datasets obtained from Idaho Dept. of Water Resources; roads and cities datasets obtained from ESRI Online Services.

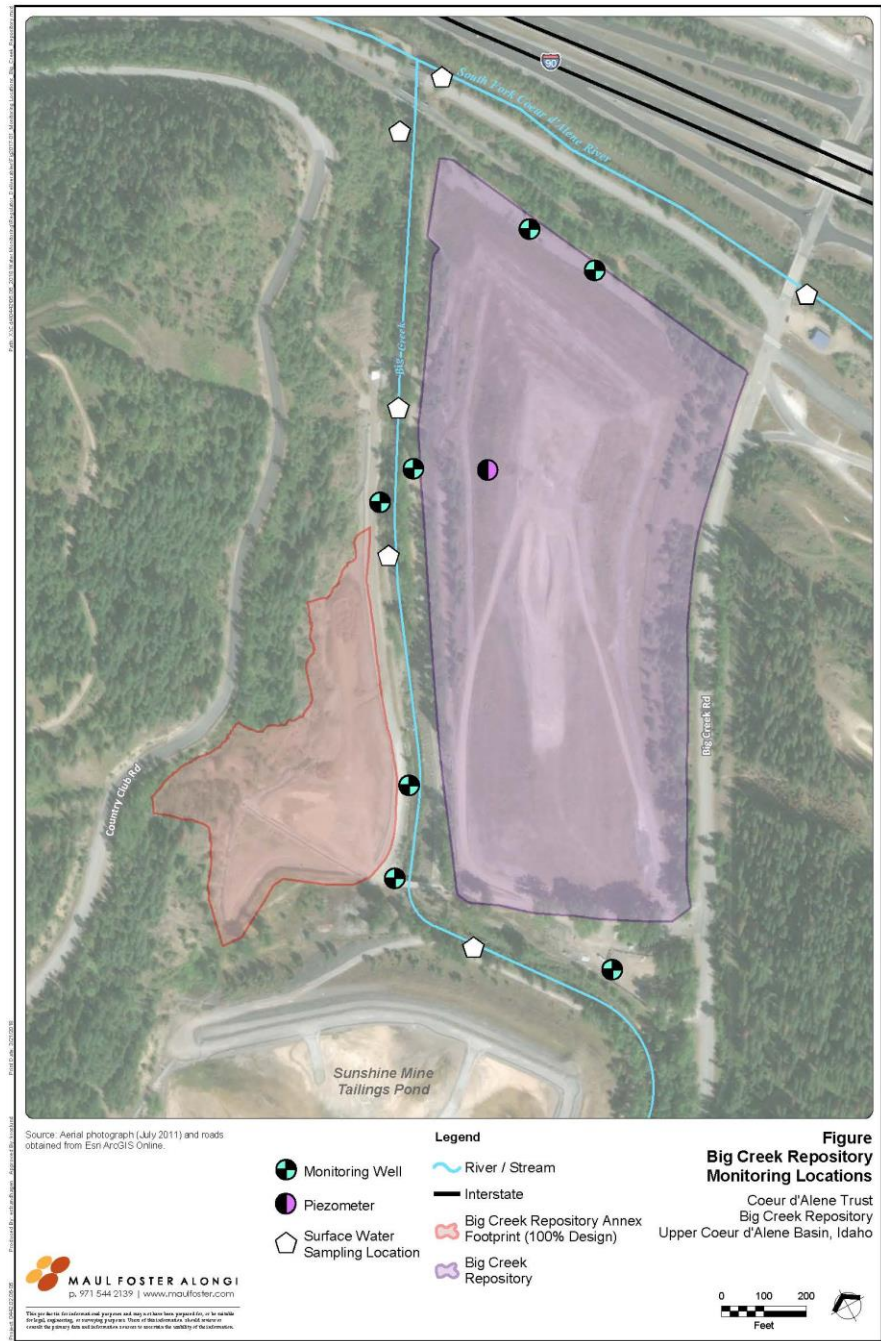
**MAUL FOSTER ALONGI**  
p. 208.512.1307 | www.maulfooster.com

This product is for informational purposes only and may not have been prepared for, or be suitable for, legal, engineering, or planning purposes. Users of this information should exercise care with the primary data and information sources to ascertain the validity of the information.

# East Mission Flats Repository Monitoring

- Area historically impacted by flood deposition of contaminants from river
- Floodwater gradually rose up against the toe of the repository for six days during flooding in the spring of 2017, but design accounts for this short-term flooding
- Groundwater metals concentrations remain below regulatory limits
- No increase in groundwater metals following waste placement
- Monitoring data provides no indication that repository contaminants are moving off the site
- About 10,000 compacted cubic yards (ccy) placed last season
- Total remaining capacity is a little over 211,000 ccy





# Big Creek Repository/Annex Monitoring

- Historically impacted site
- No increase in groundwater metals following waste placement
- Initially decreasing concentrations of antimony and arsenic in downgradient groundwater have leveled out in recent years
- South Fork frequently exceeds regulatory limits for antimony, cadmium and zinc
- Big Creek metals concentrations generally not exceeding regulatory limits
- Monitoring data provides no indication that repository contaminants are moving off the site
- About 450 ccy placed at BCR with over 126,000 ccy space remaining due to addition of East Area Expansion
- Big Creek Repository Annex had about 5,200 ccy placed last season and has a remaining capacity of about 182,800 ccy



## **Lower Burke Canyon Repository**

- On-going surface water monitoring both up-gradient and down-gradient of LBCR due to other Canyon Creek investigations
- Almost 16,500 compacted cubic yards placed last season
- Remaining capacity is 1,095,000 compacted cubic yards

# SVNRT Repository and CCR

- Silver Valley Natural Resource Trustee (SVNRT) repository
  - Shut down in 2000, major contributor to contamination in Canyon Creek
- Canyon Creek Repository (CCR)
  - Under design
  - Construction planned to start in 2020 and be completed in 2022
  - Will address impacts to Canyon Creek from the former SVNRT repository

# Page Repository

- Historically impacted site
- Repository being expanded to the west.
- Mitigation wetlands constructed at WENI and Robinson Creek.
- Concentration exceedances in both groundwater and surface water are similar to pre-expansion conditions
- Received approximately 9,000 ccy of waste in 2017 from the Box including remedial action and ICP wastes
- Expansion has over 500,000 ccy capacity remaining



					DRAFTER:	E. RADFORD	COORDINATE SYSTEM:	
					SURVEYOR:	D. RAMUS	SCALE:	PROJECT CONTROL 1" = 100'
					CHECKED:	J. PRICE	APPROVED:	D. FORSETH
NO.	DATE	REVISIONS	BY	CHK	DATE:	2/21/2018	DATE:	2/21/2018



PAGE REPOSITORY

WEST  
PLAN SHEET



SHEET:	S2
DATE:	2/22/2018
PROJECT NO.:	17004-04
SHEET NO.:	3 OF 4



# Limited Use Repository Update

- Box
  - Government Gulch LUR has received over 21,000 compacted cubic yards (ccy) of roads waste and expected to receive 30,000 ccy this season
  - GG Community Fill Plan location has received about 14,700 ccy of ICP waste from infrastructure projects. Expected to receive 25,000 ccy this season
  - LUR and CFP cells, once closed, will provide level land for redevelopment (about 17 acres in GG)

# Work at Shoshone County Transfer Station Limited Use Repository



# Limited Use Repositories continued

- Basin
  - Zanetti Yard LUR in Osburn will reach capacity this season (28,500 ccy)
  - Shoshone County Transfer Station near Kellogg will reach capacity this season (22,240 ccy)
  - LURs, once closed, will provide level space for redevelopment (about 11 acres total)
  - East Osburn LUR was closed in 2015 and provides redevelopable land for its owner (filled capacity of 29,150 ccy)



# East Osburn LUR Closure





# Questions

Craig Cameron

(509) 376-8665

[cameron.craig@epa.gov](mailto:cameron.craig@epa.gov)