

Environmental work is underway high up in Ninemile Creek watershed. Workers are finishing construction of a *Waste Consolidation Area* there. The WCA will take in waste from many mine cleanups in the area. Moving contaminated waste from several sites into one smaller, managed location helps keep it from moving downstream. This work marks the start of major efforts in the Basin to control sources of heavy metals like lead and zinc. The work protects the environment and people's health.

## Questions and Answers about the Cleanup Work

### Why is cleanup happening in Ninemile?

The Ninemile Creek watershed is a priority for cleanup because it has scores of old mine and mill sites. Those sites are releasing high concentrations of dissolved zinc and other metals like lead into the stream and groundwater. Work is being carried out under EPA's Record of Decision for the Superfund cleanup.

### Where is the WCA located?

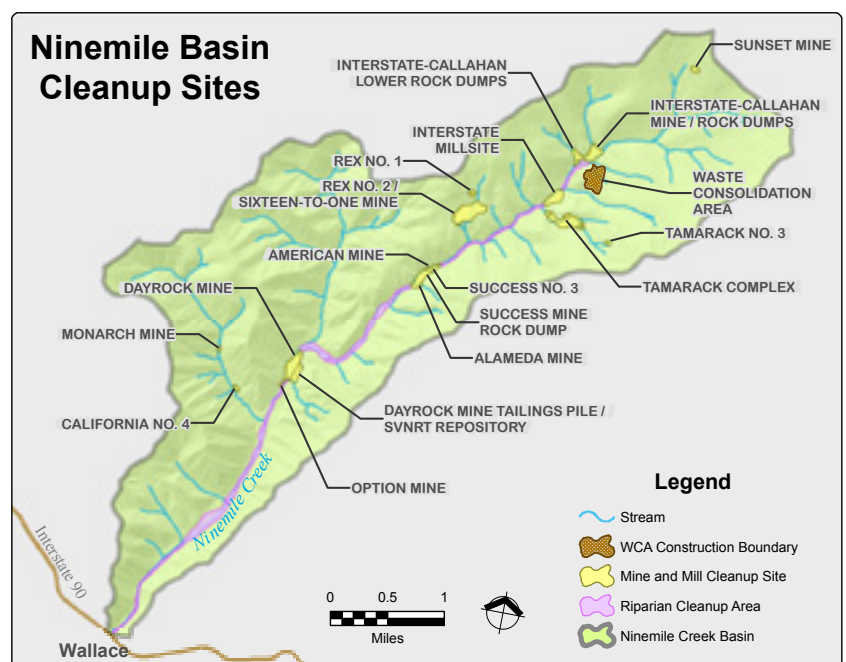
The WCA site is located in the East Fork Ninemile Creek drainage area. It is seven miles north of Wallace, in a saddle area in mountainous terrain. It consists of about 20 acres owned by the CDA Work Trust (the Trust). The WCA is engineered to help prevent contaminants from moving off-site.

### What sites will get cleaned up in the Ninemile Creek Watershed?

Here's a map of sites in Ninemile Basin that will get cleaned up in the future. Contaminated waste from most of these sites is expected to go into the WCA. (One exception is the Dayrock tailings impoundment/SVNRT, which would be closed in place; there are no plans to move material from this site to the WCA.) Taking material from lots of places and putting it into one smaller, managed location helps us control sources of contamination.

### How long will it take to clean up the mine sites in Ninemile?

It may take a decade or more to clean up the mine and mill sites. Work will happen during construction season each year, starting in about June and continuing until the snow falls. This year and next, we are working on Interstate Callahan. The following year, 2016, we will start on Success Mine, which could take up to four years to complete. Then, additional locations will get cleaned up.



## Will the work be disruptive?

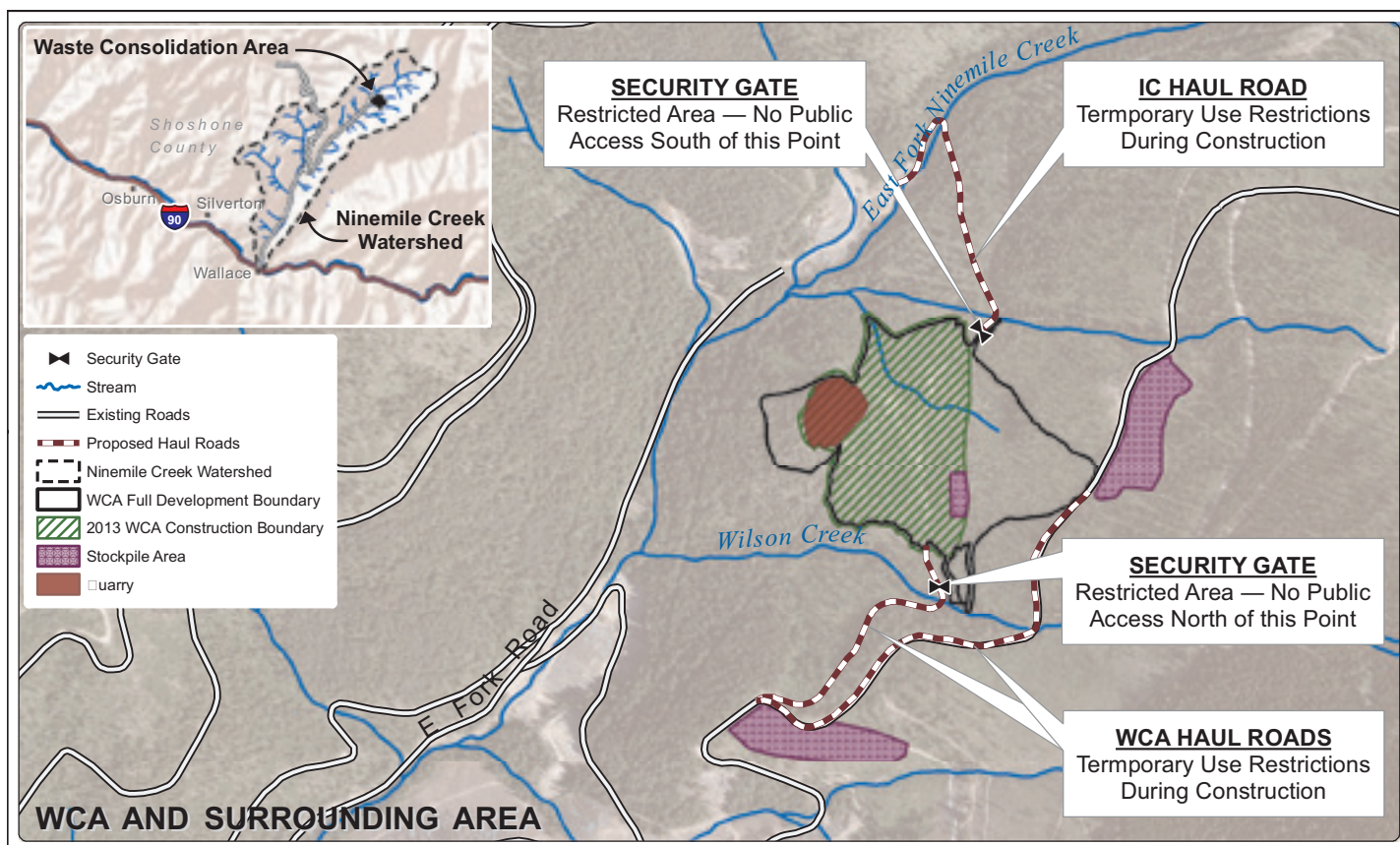
Since the work is in an unpopulated area, it is not expected to be disruptive to the community. Contaminated materials will be consolidated on site, so there will be no trucking of waste out of the canyon. Trucks and work equipment will be assembled at the work site and are not expected to regularly come and go.

## Will there be road closures?

The project will involve some road improvements and construction. At times, roads in remote areas will be closed, except for emergency access. There will be no impact to travel over Dobson Pass.

## Will there be access restrictions?

During construction seasons, there will be restrictions on recreating in some areas. For safety, ATV users, hikers, and other recreationists will not be able to access the active construction area. Signs will be posted. Recreationists should expect route closures and changes to access during construction. See map for details.



## More Questions or Concerns?

### Contact:

Dan Meyer  
CDA Work Trust  
☎ 208-783-0222

**EPA Cleanup Website:** [www.epa.gov/r10earth/bunkerhill](http://www.epa.gov/r10earth/bunkerhill)

**Facebook:** [www.facebook.com/cdabasin](http://www.facebook.com/cdabasin)

The EPA provides reasonable accommodation to people with disabilities on a case-by-case basis. If you need a reasonable accommodation (such as information in Braille format or large print or interpretation services), please notify **Andrea Lindsay** ☎ 206-553-1896 or e-mail ✉ [lindsay.andrea@epa.gov](mailto:lindsay.andrea@epa.gov)

🗣 **TDD or TTY users**, please call 1-800-877-8339 and give the operator Andrea's phone number.