

# Cleanup Milestone Reached: Big Source Control Efforts Begin

## Environmental Work to Start in Ninemile Creek Watershed

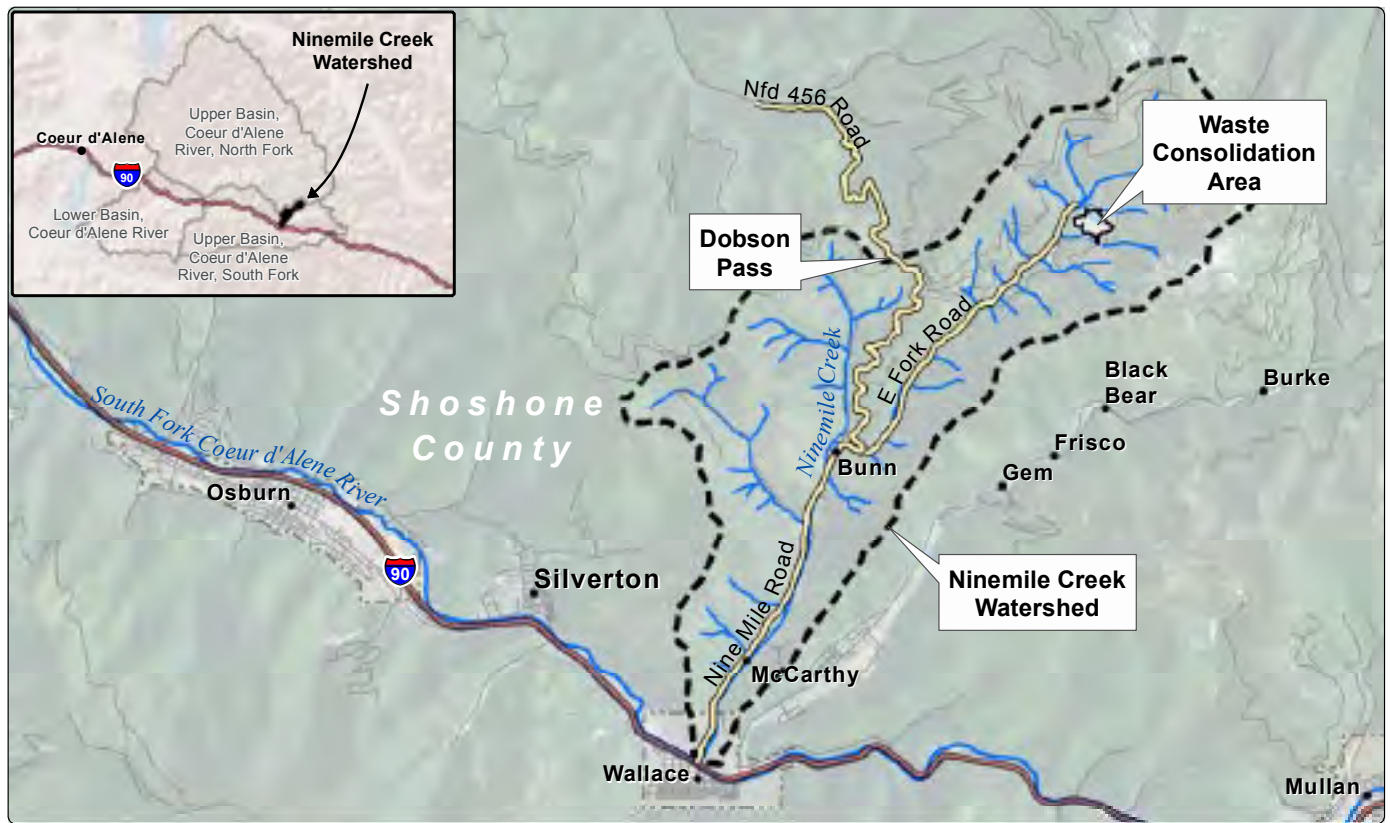
East Fork Ninemile Waste Consolidation Area

Wallace, Idaho

June 2013

This summer, environmental cleanup will get started high up in the remote area of the Ninemile Creek watershed. The CDA Work Trust will begin building a “Waste Consolidation Area” or WCA there, doing clearing and road development work.

The work will prepare for next year’s cleanup of the Interstate-Callahan Mine rock dumps site. Contaminated materials from that cleanup will be put in the WCA. In future years, waste from cleanups of other nearby mine sites will also go into the WCA.



The Trust expects work to begin in June or July. It will continue until winter weather sets in. These activities represent a milestone in the overall Coeur d’Alene Basin Cleanup Project: the start of major “source control” efforts. This work will help control chief sources of heavy metals, including lead and zinc, which present a risk to people and the environment.

The Ninemile Creek watershed is in an area called the “Upper Basin” — the eastern part of the Coeur d’Alene River Basin. The Upper Basin is the main area of historical mining and industrial activities. It is also the primary source of metal contamination that flows downstream into communities. Work is being carried out under EPA’s Record of Decision for the Superfund cleanup.

The Ninemile Creek watershed is a priority for cleanup because it has scores of old mine and mill sites, releasing high concentrations of dissolved zinc and other metals like lead to the water. This watershed has the poorest water quality of all the Upper Basin tributaries.

Contaminated material like soil and mine tailings will be taken from the historical mining sites that occupy a wide area and will be placed in the WCA, a much smaller, isolated location. The WCA footprint will be on 20 acres of non-contaminated land owned by the Trust. It is located seven miles north of Wallace, in a saddle area in mountainous terrain in the East Fork Ninemile Creek drainage area. The WCA will be engineered to help prevent contaminants from seeping into groundwater or moving off-site.

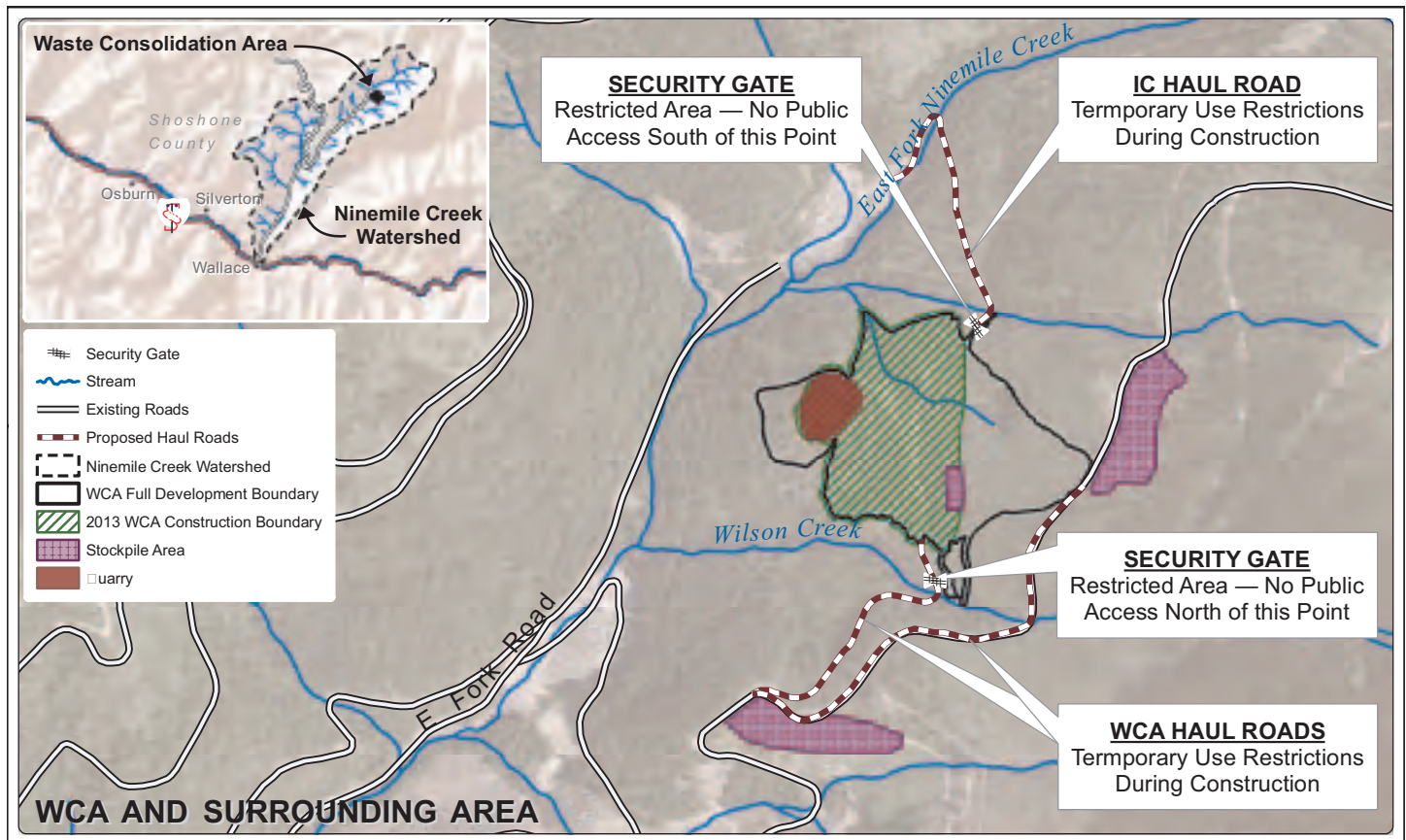
## Being Good Neighbors

Since the work is taking place in an unpopulated area, it is not expected to be disruptive to the community. The Trust will take steps to limit any nuisance to residents in the lower Ninemile watershed and a single nearby resident. The project will involve some road improvements and construction. At times roads in remote areas will be closed, except for emergency access. (Access to the single residence in the area is via another route.) At times, some blasting may be heard in the distance.

There will be no impact to travel over Dobson Pass from the 2013 construction activities.

During the 2013 construction season, there will be restrictions on recreating in specific areas. For safety and security, ATV users, hikers, and other recreationalists will not be able to access the active construction area. Signs will be posted to delineate those areas. The map below outlines the general area where access restrictions will be in place.

Because the contaminated waste materials will be consolidated on site, there will be no trucking of waste out of the Ninemile canyon. Trucks and work equipment will assemble at the work site and are not expected to regularly come and go.



## What is the CDA Work Trust?

The CDA Work Trust is also called the "Trust" or the "Asarco Successor Coeur d'Alene Custodial and Work Trust." The Trust was set up in 2009 as part of a large legal settlement. It administers the settlement funds under EPA's direction, doing

Superfund cleanup work in areas contaminated by historical mining practices in the Basin. The Trust hires local engineering and construction firms and requires that at least 80 percent of the workers come from the local labor pool.

## What work will be done to prepare the Waste Consolidation Area this year?

- Clear the property
- Develop a rock quarry area
- Install two rock buttresses
- Install a drainage system
- Improve forest logging roads and construct a new road to provide access from the interstate – Callahan rock dumps to the WCA

## What work will be done during the 2014 and 2015 construction seasons?

- Excavate and haul mine waste from Interstate – Callahan rock dumps
- Consolidate and compact 250,000 cubic yards of mine waste

## Questions or Concerns?

### Contact:

Dan Meyer  
CDA Work Trust  
☎ 208-783-0222

📄 *TDD or TTY users, please call 1-800-877-8339 and ask for 206-553-1896*

### EPA Cleanup Website:

<http://yosemite.epa.gov/r10/cleanup.nsf/sites/bh>



### Facebook:

[www.facebook.com/cdabasin](http://www.facebook.com/cdabasin)

***Cleanup Milestone Reached:  
Big Source Control Efforts Begin***

***Environmental Work to Start  
in Ninemile Creek Watershed  
Details Inside***